

Ashwood Park Primary School

Safeguarding & Child Protection Policy

September 2023



Designated Lead Person for Child Protection: Jane Lister Deputy Head Teacher 01384 818545
Out of Hours: 07379 906201

Deputy Designated Lead Person for Child Protection: Keith Butler Head Teacher 01384 818545

Named Governor for Safeguarding & Child Protection: Ben Davis c/o 01384 818545

Child in Care Lead: Jane Lister 01384 818545

Early Help Facilitator: Alison Webb 01384 818545

School E-Safety Lead: Jane Lister/Liam Dimmock 01384 818545

Local Authority Designated Officer (LADO), for allegations against staff:

Yvonne Nelson Brown Sukhchandani Kaur

Tel: 01384 - 813110

Referral email: allegations@dudley.gcsx.gov.uk

Chair of Governors: Jo Marchant contact no 01384 818545

Vice-Chair of Governors: Ben Davies contact no 01384 818545

MASH (Multi Agency Safeguarding Hub): 0300 555 0050

Out of Hours Duty Team: 0300 555 8574

PREVENT: Safe and Sound (Dudley's Community Safety Partnership)

<https://www.dudleysafe&sound.org/prevent>

Virtual School for LAC: Emma Thomas 01384 813493

Private Fostering E mail Angela.Marsh@dudley.gov.uk

CSE Team: Nicki.Fernandes@dudley.gov.uk

SCHOOL NURSE: contact no: Admin Team 01384 408990 Team lead Laura Bickley 01384 408992

MENTAL HEALTH LEAD: Jenny Hodgkiss 01384 818545

Approved by: Governing Body **Date:** September 2023

Last reviewed on: September 2023 (J Lister)

Next review due by: September 2024 (Earlier if changes in legislation)

1. Purpose and Aims

This policy is written in line with Keeping Children Safe in Education 2023 (KCSiE 2023).

https://assets.publishing.service.gov.uk/government/uploads/system/uploads/attachment_data/file/1181955/Keeping_children_safe_in_education_2023.pdf

COVID-19

Ashwood Park Primary School will continue to follow government and local authority guidance when issued.

Rationale

At Ashwood Park Primary School we believe that all children and young people have a fundamental right to be protected from harm. They have a right to expect schools to provide a safe and secure environment. It is a guiding principle of the law and child protection procedures that the protection and welfare of a child must always be the first priority. Failure to provide an effective response can have serious consequences for the child.

Safeguarding is defined as:

- Protecting children from maltreatment
- Preventing impairment of children's mental and physical health or development
- Ensuring that children are growing up in circumstances consistent with the provision of safe and effective care
- Taking action to enable all children to have the best outcomes

Ashwood Park Primary School is committed to safeguarding and promoting the welfare of all children and young people both within the school environment and outside. Because of our day-to-day contact with children and young people, education staff are well placed to observe outward signs of abuse, changes in children's behaviour or their failure to develop. We need, therefore, 'to be alert to the possibility of abuse occurring, be aware of the procedures to be followed if you have suspicions and have the confidence to follow those procedures.' This policy applies to all staff, governors and volunteers working in school.

Ashwood Park Primary School recognises its legal duty under s.175/157 Education Act 2002 to work with other agencies in safeguarding and promoting the welfare of children and young people and protecting them from "significant harm". The protection of our pupils from suffering or being likely to suffer significant harm is the responsibility of the school and wider community, superseding any other considerations.

Aims

Ashwood Park Primary School is committed to the safeguarding of all pupils in the school and child protection forms part of the school's safeguarding responsibilities. Our aim is to ensure that all pupils are safe in school and that measures are put in place to support any child, who is at risk of harm. Overall the policy provides information for all adults working with children to carry out their duty of care responsibly. Ashwood Park Primary School will provide information and training for all staff and other adults to carry out this duty of care.

Prevention

The six main elements of the policy are:

- ensuring we practise safe recruitment in checking the suitability of staff and volunteers to work with children

- raising awareness of child protection issues and equipping children with the skills needed to keep them safe
- implementing procedures for identifying and reporting cases, or suspected cases, of abuse
- supporting pupils, who have been abused in accordance with his/her child protection plan
- establishing a safe environment in which children can learn and develop
- ensuring there are links with other safeguarding policies and practice; for example, physical intervention, anti-bullying, behaviour policy, attendance, medical conditions, first aid, intimate care, emergency evacuation, educational visits, sexual exploitation, sexting, disability, homophobic abuse, racism, domestic abuse, female genital mutilation, radicalisation and extremism. (Further guidance on these issues is available on the DSPP website)

[Home - Dudley Safeguarding People Partnership](#)

We recognise that high self-esteem, confidence, supportive friends and good lines of communication with a trusted adult help prevention. The school will therefore:

- establish and maintain an environment where children feel secure, are encouraged to talk and are listened to
- ensure children know that there are adults in the school, whom they can approach if they are worried or in difficulty
- include in the curriculum, activities and opportunities, which equip children with the skills they need to stay safe from harm

At Ashwood Park we have a child centred and coordinated approach to safeguarding which means we consider, at all times, what is in the best interests of the child. We understand that safeguarding and promoting the welfare of children is everyone's responsibility and that everyone who is exposed to children and their families has a role to play.

No single professional can have a full picture of a child's needs and circumstances. If children and families are to receive the right help at the right time, everyone who comes into contact with them has a role to play in identifying concerns, sharing information and taking prompt action.

The school aims to ensure that:

- Appropriate action is taken in a timely manner to safeguard and promote children's welfare
- All staff are aware of their statutory responsibilities with respect to safeguarding
- Staff are properly trained in recognising and reporting safeguarding issues
- Some children have an increased risk of abuse, and additional barriers can exist for some children with respect to recognising or disclosing it. We are committed to anti-discriminatory practice and recognise children's diverse circumstances. We ensure that all children have the same protection, regardless of any barriers they may face.

We give special consideration to children who:

- Have special educational needs (SEN) or disabilities
- Are young carers
- May experience discrimination due to their race, ethnicity, religion, LGBTQ+, gender identification or sexuality
- Have English as an additional language

- Are known to be living in difficult situations – for example, temporary accommodation or where there are issues such as substance abuse or domestic violence
- Are at risk of FGM, sexual and criminal exploitation, forced marriage, or radicalisation
- Are asylum seekers
- Are at risk due to either their own or a family member's mental health needs
- Are Children in Care or previously Children in Care
- Are missing or absent from education for prolonged periods and/or repeat occasions
- Whose parent/carer has expressed an intention to remove them from school to be home educated

2. Statutory Framework

This policy is based on the Department for Education's statutory guidance [Keeping Children Safe in Education \(2023\)](#) and [Working Together to Safeguard Children \(2018\)](#), and the [Governance Handbook](#), in addition [DfE's filtering and monitoring standards](#). We comply with this guidance and the arrangements agreed and published by our 3 local safeguarding partners.

This policy is also based on the following legislation:

- Section 175 of the [Education Act 2002](#), which places a duty on schools and local authorities to safeguard and promote the welfare of pupils
- [The School Staffing \(England\) Regulations 2009](#), which set out what must be recorded on the single central record and the requirement for at least one person conducting an interview to be trained in safer recruitment techniques
- [The Children Act 1989](#) (and [2004 amendment](#)), which provides a framework for the care and protection of children
- Section 5B(11) of the Female Genital Mutilation Act 2003, as inserted by section 74 of the [Serious Crime Act 2015](#), which places a statutory duty on teachers to report to the police where they discover that female genital mutilation (FGM) appears to have been carried out on a girl under 18
- [Statutory guidance on FGM](#), which sets out responsibilities with regards to safeguarding and supporting girls affected by FGM
- [The Rehabilitation of Offenders Act 1974](#), which outlines when people with criminal convictions can work with children
- Schedule 4 of the [Safeguarding Vulnerable Groups Act 2006](#), which defines what 'regulated activity' is in relation to children
- [Statutory guidance on the Prevent duty](#), which explains schools' duties under the Counter-Terrorism and Security Act 2015 with respect to protecting people from the risk of radicalisation and extremism
- [The Human Rights Act 1998](#), which explains that being subjected to harassment, violence and/or abuse, including that of a sexual nature, may breach any or all of the rights which apply to individuals under the [European Convention on Human Rights](#) (ECHR)
- [The Equality Act 2010](#), which makes it unlawful to discriminate against people regarding particular protected characteristics (including disability, sex, sexual orientation, gender reassignment and race). This means our governors and headteacher should carefully consider how they are supporting their pupils with regard to these characteristics. The Act allows our school to take positive action to deal with particular disadvantages affecting pupils (where we can show it's proportionate). This includes making reasonable adjustments for disabled pupils. For example, it

could include taking positive action to support girls where there's evidence that they're being disproportionately subjected to sexual violence or harassment.

- [The Public Sector Equality Duty \(PSED\)](#), which explains that we must have due regard to eliminating unlawful discrimination, harassment and victimisation. The PSED helps us to focus on key issues of concern and how to improve pupil outcomes. Some pupils may be more at risk of harm from issues such as sexual violence; homophobic, biphobic or transphobic bullying; or racial discrimination.
- [Information Sharing \(2018\)](#)
https://assets.publishing.service.gov.uk/government/uploads/system/uploads/attachment_data/file/721581/Information_sharing_advice_practitioners_safeguarding_services.pdf
- The [Childcare \(Disqualification\) and Childcare \(Early Years Provision Free of Charge\) \(Extended Entitlement\) \(Amendment\) Regulations 2018](#) (referred to in this policy as the 2018 Childcare Disqualification Regulations) and [Childcare Act 2006](#), which set out who is disqualified from working with children
- [Statutory guidance on the Prevent duty](#), which explains schools' duties under the Counter-Terrorism and Security Act 2015 with respect to protecting people from the risk of radicalisation and extremism
[The Human Rights Act 1998](#), which explains that being subjected to harassment, violence and/or abuse, including that of a sexual nature, may breach any or all of the rights which [apply to individuals under the European Convention on Human Rights \(ECHR\)](#)
- [The Equality Act 2010](#), which makes it unlawful to discriminate against people regarding particular protected characteristics (including disability, sex, sexual orientation, gender reassignment and race). This means our governors and headteacher should carefully consider how they are supporting their pupils with regard to these characteristics. The Act allows our school to take positive action to deal with particular disadvantages affecting pupils (where we can show it's proportionate). This includes making reasonable adjustments for disabled pupils. For example, it could include taking positive action to support girls where there's evidence that they're being disproportionately subjected to sexual violence or harassment.
- [The Public Sector Equality Duty \(PSED\)](#), which explains that we must have due regard to eliminating unlawful discrimination, harassment and victimisation. The PSED helps us to focus on key issues of concern and how to improve pupil outcomes. Some pupils may be more at risk of harm from issues such as sexual violence; homophobic, biphobic or transphobic bullying; or racial discrimination.
- The [Childcare \(Disqualification\) and Childcare \(Early Years Provision Free of Charge\) \(Extended Entitlement\) \(Amendment\) Regulations 2018](#) (referred to in this policy as the 2018 Childcare Disqualification Regulations) and [Childcare Act 2006](#), which set out who is disqualified from working with children
- This policy also meets requirements relating to safeguarding and welfare in the [statutory framework for the Early Years Foundation Stage](#)

This policy follows locally agreed multi-agency procedures that have been put in place by the Dudley Safeguarding People Partnership (DSPP).

[Home - Dudley Safeguarding People Partnership](#)

The school's policy has been written taken into consideration our locally agreed multi-agency procedures that have been put in place by the three safeguarding partners:

- ✓ (The local authority (LA))
- ✓ Integrated care boards (previously known as clinical commissioning groups) for an area within the LA
- ✓ The chief officer of police for a police area in the LA area

. The links for Dudley's procedures are below:

<https://dudleysafeguarding.org.uk/>

<https://dudleysafeguarding.org.uk/wp-content/uploads/2023/03/DSPP-Support-Level-Guidance-and-Framework-March-2023.pdf>

The safeguarding priorities for Dudley 2022/24 are:

Neglect

Exploitation

Family Safeguarding

These are detailed further on the above website and are included in whole school training.

3. The Designated Safeguarding Lead (DSL)

The DSL is a member of the senior leadership team. Our DSL is Mrs Jane Lister. The DSL takes lead responsibility for child protection and wider safeguarding. This includes online safety, and understanding our filtering and monitoring processes on school devices and school networks to keep pupils safe online.

During term time, the DSL will be available during school hours for staff to discuss any safeguarding concerns. Out of hours: **07379 906201**

When the DSL is absent, the deputy DSL Mr Keith Butler will act as cover.

If the DSL and deputy are not available, Mrs Alison Webb (Early Help Lead), Mrs Helen Raine (AHT) or Mrs Kelly Williams (AHT) will act as cover.

The DSL will be given the time, funding, training, resources and support to:

- Work closely with teachers and share information & provide advice and support to other staff on child welfare and safeguarding and child protection matters
- Set out procedures so that staff promptly share their safeguarding concerns in writing
- Help promote educational outcomes by sharing the information about the welfare, safeguarding and child protection issues that children, including children with a social worker, are experiencing, or have experienced, with teachers and school leadership staff. Their role could include ensuring that the school, and their staff, know who these children are, understand their academic progress and attainment and maintain a culture of high aspirations for this cohort; supporting teaching staff to identify the challenges that children in this group might face and the additional academic support and adjustments that they could make to best support these children.
- Refer cases of suspected abuse and neglect to the local authority children's social care as required and support staff who make referrals to local authority children's social care.
- Refer cases to the Channel programme where there is a radicalisation concern as required and support staff who make referrals to Channel programme.
- Refer cases where a person is dismissed or left due to risk/harm to a child to the Disclosure and Barring Service as required.
- Refer cases where a crime may have been committed to the Police
- Take part in strategy discussions and inter-agency meetings and/or support other staff to do so
- Contribute to the assessment of children, particularly in relation to Early Help

- Liaise with the Headteacher to inform them of issues – especially ongoing enquiries under section 47 of the Children Act 1989 and police investigations. This should include being aware of the requirement for children to have an Appropriate Adult. Further statutory guidance can be found in Statutory guidance – PACE Code C 2019.
- Work closely with Attendance and Mental Health Leads
- Have a good understanding of harmful sexual behaviour
- Have a good understanding and takes the lead of the filtering and monitoring systems and processes in place at our school, this is included in the DSL's job description
- Be confident that they know what local specialist support is available to support all children involved (including victims and alleged perpetrators) in sexual violence and sexual harassment, and be confident as to how to access this support
- Be aware that children must have an 'appropriate adult' to support and help them in the case of a police investigation or search
- Refer suspected cases, as appropriate, to the relevant body (local authority children's social care, Channel Panel, Disclosure and Barring Service, and/or police), and support staff who make such referrals directly
- The DSL will also keep the headteacher informed of any issues and liaise with local authority case managers (LADO) for safeguarding and child protection concerns as appropriate.
- The full responsibilities of the DSL and deputies are set out in their job descriptions.

4. The Headteacher and Governing Body

The Headteacher is responsible for the implementation of this policy, including:

- Ensuring that staff (including temporary & supply staff) and volunteers are informed of our systems which support safeguarding, including this policy, as part of their induction
- Communicating this policy to parents when their child joins the school and via the school website
- Ensuring that the DSL has appropriate time, funding, training and resources, and that there is always adequate cover if the DSL is absent
- Ensuring that all staff undertake appropriate safeguarding and child protection training and update this regularly
- Acting as the 'case manager' in the event of an allegation of abuse made against another member of staff or volunteer, where appropriate
- Ensuring the relevant staffing ratios are met, where applicable
- Making sure each child in the Early Years Foundation Stage is assigned a key person
- Overseeing the safe use of technology, mobile phones and cameras in the setting
- Promoting good oral health and signposting accordingly to services
- Refer cases where a person is dismissed or left due to risk/harm to a child to the Disclosure & Barring Service/Teaching Regulatory Agency
- Complete appropriate safeguarding and child protection (including online) training
- Making decisions regarding all low-level concerns, though they may wish to collaborate with the DSL on this

The Governing body will approve this policy at each review, ensure it complies with the law and hold the headteacher to account for its implementation.

The Governing Body/ will appoint a senior lead Mr Ben Davis (Safeguarding Governor) to monitor the effectiveness of this policy in conjunction with the full governing board. This is always a different person from the DSL.

The Chair of governors Mrs Jo Marchant will act as the 'case manager' if an allegation of abuse is made against the headteacher, where appropriate.

Ensure that the school has appropriate filtering and monitoring systems in place and review their effectiveness. This includes:

- Making sure that the leadership team and staff are aware of the provisions in place, and that they understand their expectations, roles and responsibilities around filtering and monitoring as part of safeguarding training
- Reviewing the [DfE's filtering and monitoring standards](#), and discussing with IT staff and service providers what needs to be done to support the school in meeting these standards
- Where another body is providing services or activities (regardless of whether or not the children who attend these services/activities are children on the school roll):
- Seek assurance that the other body has appropriate safeguarding and child protection policies/procedures in place, and inspect them if needed
- Make sure there are arrangements for the body to liaise with the school about safeguarding arrangements, where appropriate
- Make sure that safeguarding requirements are a condition of using the school premises, and that any agreement to use the premises would be terminated if the other body fails to comply.

All Governors have read and understood Keeping Children Safe in Education 2023.

The Governing Body should ensure all governors receive appropriate safeguarding and child protection training at induction.

5. Safeguarding Policies and Procedures/Legal Responsibilities and duty to share information

Our safeguarding responsibilities include:

- Protecting children from maltreatment
- Preventing impairment of children's mental and physical health or development
- Ensuring that children grow up in circumstances consistent with the provision of safe and effective care
- Taking action to enable all children to have the best outcomes

The following three **Safeguarding Partners** are identified in Keeping Children Safe in Education (and defined in the Children Act 2004, as amended by chapter 2 of the Children and Social Work Act 2017). They will decide to work together to safeguard and promote the welfare of local children, including identifying and responding to their needs:

- The local authority (LA)
- A clinical commissioning group for an area within the LA
- The chief officer of police for a police area in the LA area

Roles and Responsibilities

Safeguarding and child protection is **everyone's** responsibility. This policy applies to all staff, volunteers and governors in the school and is consistent with the procedures of the 3 safeguarding partners. Our policy and procedures also apply to extended school and off-site activities.

All staff

- Will read and understand part 1 and annex B of the Department for Education's statutory safeguarding guidance, [Keeping Children Safe in Education](#), and review this guidance at least annually

- Sign a declaration at the beginning of each academic year to say that they have reviewed, understand, and will follow the guidance
- Reinforce the importance of online safety when communicating with parents and carers. This includes making parents and carers aware of what we ask children to do online (e.g., sites they need to visit or who they'll be interacting with online)
- Follow school procedures for the collection and non-collection of pupils at the end of the session/day. This includes all children being dismissed to an identified parent/carer/adult at the end of the school day from classroom doors or the playground for Y3& Y4. Year 6 parents may give written consent for children to walk home by themselves.

OSCA children are collected from their classroom internal doors by identified staff members. They are registered upon arrival and any children who are expected but have not arrived are reported to the School Office immediately so that checks can be followed. DSL/HT to be informed.

Any children who have not been collected will be taken to the school office so that parents can be contacted. DSL/HT to be informed.

All children have to be collected by a known adult from after school clubs.

All staff will be aware of:

- Our systems which support safeguarding, including this child protection and safeguarding policy, the staff code of conduct, the role and identity of the designated safeguarding lead (DSL) and deputy the behaviour policy, and the safeguarding response to children who go missing from education
- The Early Help process and their role in it, including identifying emerging problems, liaising with the DSL, and sharing information with other professionals to support early identification and assessment
- The process for making referrals to local authority children's social care and for statutory assessments that may follow a referral, including the role they might be expected to play
- What to do if they identify a safeguarding issue or a child tells them they are being abused or neglected, including specific issues such as FGM, and how to maintain an appropriate level of confidentiality while liaising with relevant professionals
- The signs of different types of abuse and neglect, as well as specific safeguarding issues, such as child exploitation (CSE/CCE), indicators of being at risk from or involved with serious violent crime, FGM and radicalisation
- The importance of reassuring victims that they are being taken seriously and that they will be supported and kept safe
- The fact that children can be at risk of harm inside and outside of their home, at school and online.
- What to look for to identify children who need help or protection.

Staff safeguarding training.

All staff members will undertake safeguarding and child protection training, including online safety training, at induction, together with managing allegations and whistle-blowing procedures, to ensure they understand the school's safeguarding systems and their responsibilities, and can identify signs of possible abuse or neglect. This training will be regularly updated and will be in line with local and statutory guidelines.

All staff will:

- undertake annual Cyber-Security training
- have regard to the Teachers' Standards to support the expectation that all teachers:
- manage behaviour effectively to ensure a good and safe environment
- have a clear understanding of the needs of all pupils.

All staff will have training on the government's anti-radicalisation strategy, Prevent, to enable them to identify children at risk of being drawn into terrorism and to challenge extremist ideas.

- Staff will also receive regular safeguarding and child protection updates (for example, through emails, e-bulletins and staff meetings) as required, but at least annually.
- All new staff will receive robust safeguarding training in line with the whole school training package, this will be delivered as part of their induction process before they commence working with our pupils/students.

Volunteers and Contractors

All volunteers and contractors will receive appropriate training, as applicable.

All visitors will be required to verify their identity to the satisfaction of staff and to leave their belongings, including their mobile phone(s), in a safe place during their visit.

If the visitor is unknown to the setting, we will check their credentials and reason for visiting before allowing them to enter the setting. Visitors should be ready to produce identification.

Visitors are expected to sign the visitors' book and wear a visitor's badge.

Visitors to the school who are visiting for a professional purpose will be asked to show photo ID and:

- Will be asked to show their DBS certificate, which will be checked alongside their photo ID
- Or the organisation sending the professional, such as the LA or educational psychology service, will provide prior written confirmation that an enhanced DBS check with barred list information has been carried out

All other visitors, including visiting speakers, will always be accompanied by a member of staff. We will not invite into the school any speaker who is known to disseminate extremist views and will carry out appropriate checks to ensure that any individual or organisation using school facilities is not seeking to disseminate extremist views or radicalise pupils or staff.

The DSL and Deputies

*Please note – in this and subsequent sections, you should take any references to the DSL to mean **the DSL (or deputy DSL)**.*

The DSL and deputies will undertake child protection and safeguarding training at least every 2 years. Online safety training will be undertaken annually and regularly updated to keep knowledge of staying safe online and the risks associated up to date, this includes including filtering and monitoring and cyber security

In addition, they will update their knowledge and skills at regular intervals and at least annually (for example, through e-bulletins, meeting other DSLs, or taking time to read and digest safeguarding developments). They will also undertake Prevent Awareness training.

Governors

All governors receive training about safeguarding and child protection (including online safety) at induction, which is regularly updated. This is to make sure that they:

- Have the knowledge and information needed to perform their functions and understand their responsibilities, such as providing strategic challenge
- Can be assured that safeguarding policies and procedures are effective and support the school to deliver a robust whole-school approach to safeguarding

As the chair of governors may be required to act as the 'case manager' if an allegation of abuse is made against the headteacher, they receive training in managing allegations for this purpose.

All Governors will undertake training relating to on line filtering and monitoring, in addition one Governor will be trained in Cyber-security.

Staff who have contact with pupils and families

All staff who have contact with children and families will have supervision, which will provide them with support, coaching and training, promote the interests of children and allow for confidential discussions of sensitive issues.

6. Confidentiality

[Information Sharing](#)

It is the responsibility of all staff to share information about the protection of children with the Designated Safeguarding Lead and other professionals in a timely manner. Information should only be shared in a professional context.

Confidentiality is an issue, which needs to be discussed and fully understood by all those working with children, particularly in the context of Child Protection. Every effort should be made to ensure that confidentiality is maintained for all concerned. Information should be handled and disseminated on a need to know basis only.

Advice should be sought from the Social Care Team, who should approach the alleged abuser (or parents if the alleged abuser is a child).

Information will be stored in a secure place with restricted access to designated people and be maintained in line with data protection laws (e.g. that information is accurate, regularly updated, relevant and secure).

If a child who is subject to a child protection plan leaves, their information will be forwarded to the Designated Safeguarding Lead at the new school, in line with the government guidance on the transfer of such records.

The Data Protection Act 2018 and GDPR do not prevent, or limit, the sharing of information for the purposes of keeping children safe. Fears about sharing information must not be allowed to stand in the way of the need to promote the welfare and protect the safety of children.

It should be noted that:

- If staff need to share 'special category personal data', the DPA 2018 contains 'safeguarding of children and individuals at risk' as a processing condition that allows practitioners to share information without consent if it is not possible to gain consent, it cannot be reasonably expected that a practitioner gains consent, or if to gain consent would place a child at risk

- Staff should never promise a child that they will not tell anyone about a report of abuse, as this may not be in the child's best interests
- The government's [information sharing advice for safeguarding practitioners](#) includes 7 'golden rules' for sharing information, and will support staff who have to make decisions about sharing information
- If staff are in any doubt about sharing information, they should speak to the Designated Safeguarding Lead (or deputy)
- Confidentiality is also addressed in this policy with respect to record-keeping in section 10

7. Communication with parents

Where appropriate, we will discuss any concerns about a child with the child's parents. The DSL will normally do this in the event of a suspicion or disclosure.

Other staff will only talk to parents about any such concerns following consultation with the DSL.

If we believe that notifying the parents would increase the risk to the child, we will discuss this with the local authority children's social care team before doing so.

In the case of allegations of abuse made against other children, we will usually notify the parents of all the children involved.

We will work with the police and/or local authority children's social care to make sure our approach to information sharing is consistent.

This policy is available on the school's website. Parents are requested to supply the school with two telephone numbers and to keep these updated.

Parents should contact the school safeguarding lead if they have safeguarding concerns. In the event that the school is closed then parents can also access Children's services on:

0300 555 0050

Out of hours duty team: 0300 555 8574

Or School DSL on 07379 906201

8. Whole Staff Responsibilities

All Staff, volunteers and governors must follow the procedures set out below in the event of a safeguarding issue.

If a child is suffering or likely to suffer harm, or in immediate danger

Make a referral to Multi Agency Support Team relevant to the child's home address, for Dudley children this is Dudley Front Door and/or the police **immediately** if you believe a child is suffering or likely to suffer from harm, or in immediate danger. **Anyone can make a referral.**

Tell the DSL as soon as possible if you make a referral directly.

Dudley **Report it** page: <https://dudleysafeguarding.org.uk/>

If a child discloses a safeguarding issue to you, you should:

- Listen to and believe them. Allow them time to talk freely and do not ask leading questions
- Stay calm and do not show that you are shocked or upset

- Tell the child they have done the right thing in telling you. Do not tell them they should have told you sooner
- Explain what will happen next and that you will have to pass this information on. Do not promise to keep it a secret
- Write up your conversation as soon as possible in the child's own words. Stick to the facts, and do not put your own judgement on it
- Sign and date the write-up and pass it on to the DSL. Alternatively, if appropriate, make a referral to children's social care and/or the police directly, and tell the DSL as soon as possible that you have done so

Aside from the above professionals, do not disclose the information to anyone else unless told to do so by a relevant authority involved in the safeguarding process.

It is important to also understand the following:

- The child may not feel ready, or know how to tell someone that they are being abused, exploited or neglected
- Not recognise their experiences as harmful
- Feel embarrassed, humiliated, or threatened. This could be due to their vulnerability, disability, sexual orientation and/or language barriers

None of this should stop you from having a 'professional curiosity' and speaking to the DSL if you have concerns about a child.

9. Reporting and Record keeping

- We will hold records in line with our records retention schedule. Access is restricted to the DSL and identified senior members of staff.
- Records are electronic and are stored on CPOMs. Paper based records prior to 2017 are stored securely in a central place separate from academic records. Individual files are kept for each child: the school will not keep family files.
- All safeguarding concerns, discussions, decisions made and the reasons for those decisions, must be recorded on CPOMs. If you are in any doubt about whether to record something, discuss it with the DSL.
- Non-confidential records will be easily accessible and available. Confidential information and records will be held securely and only available to those who have a right or professional need to see them. Staff will be informed of relevant details only when the DSL feels having knowledge of a situation will improve their ability to deal with an individual child and/or family.
- Safeguarding records relating to individual children will be retained for a reasonable period after they have left the school in line with current data legislation and guidance.
- If a child for whom the school has, or has had, safeguarding concerns moves to another school, the DSL will ensure that their safeguarding and child protection file is forwarded promptly and securely, within 5 days of starting the new education setting, and separately from the main pupil file. In addition, if the concerns are significant or complex, and/or social services are involved, the DSL will speak to the DSL of the receiving school and provide information (using the pupil safeguarding form) to enable them to have time to make any necessary preparations to ensure the safety of the child. We will record where and when these records have been sent and or received.
- School will usually ask parents for consent to share information with other agencies however the Data Protection Act 2018 and GDPR do not prevent, or limit, the sharing of information for the purposes of keeping children safe.

Dealing with a Disclosure of Abuse/Reporting a Concern

When a child tells me about abuse s/he has suffered, what must I remember?

- Stay calm.
- Do not communicate shock, anger or embarrassment.
- Reassure the child. Tell her/him you are pleased that s/he is speaking to you.
- Never enter into a pact of secrecy with the child. Assure her/him that you will try to help but let the child know that you will have to tell other people in order to do this. State who this will be and why.
- Tell her/him that you believe them. Children very rarely lie about abuse; but s/he may have tried to tell others and not been heard or believed.
- Tell the child that it is not her/his fault.
- Encourage the child to talk but do not ask "leading questions" or press for information.
- Listen and remember.
- Check that you have understood correctly what the child is trying to tell you.
- Praise the child for telling you. Communicate that s/he has a right to be safe and protected.
- Do not tell the child that what s/he experienced is dirty, naughty or bad.
- It is inappropriate to make any comments about the alleged offender.
- Be aware that the child may retract what s/he has told you. It is essential to record all you have heard.
- At the end of the conversation, tell the child again who you are going to tell and why that person or those people need to know.

NB It is not education staff's role to seek disclosures. Their role is to observe that something may be wrong, ask about it, listen, be available and try to make time to talk.

Immediately afterwards (Reporting Concerns)

You must not deal with this yourself. Seek support from the DSL/Deputy DSL. Clear indications or disclosure of abuse must be reported to children's social care without delay, by the Designated Safeguarding Lead or the Headteacher.

As soon as you can afterwards, make a detailed record of the conversation using the child's own language on CPOMs copying in the DSL and deputy DSLs. Include any questions you may have asked. Do not add any opinions or interpretations. If you are unable to access CPOMs at this point complete a reporting form and hand this to the DSL. Do not leave it in their tray or on their desk for them to 'find'. It may be urgent and require an immediate response.

Reporting forms (Appendix 3) are available in the E Safeguarding file / staff room noticeboard. Once completed hand it directly to the appropriate person.

Safeguarding Mobile: **07379 906201**

If the DSL or deputy is not available, contact Children's Services on 0300 555 0050. Out of hours 0300 555 8574

At no time should an individual consider taking photographic evidence of any injuries or marks. This could lead to managing allegations procedures.

Children making a disclosure may do so with difficulty, having chosen carefully to whom they will speak. Listening to and supporting a child/young person who has been abused can be traumatic for

the adults involved. Support for you will be available from your Designated Safeguarding Lead or Headteacher.

If you have concerns about a child (as opposed to believing a child is suffering or likely to suffer from harm or is in immediate danger) Figure 1 (page 12) illustrates the procedure to follow if you have any concerns about a child's welfare.

If in exceptional circumstances the DSL is not available, this should not delay appropriate action being taken. Speak to a member of the Senior Leadership Team and/or take advice from Local Authority Children's Social Care. Referrals should be made through the Dudley Porta (Front Door) or contact 0300 555 0050.

To refer into Dudley Exploitation hub (DEX): CS.Hub@dudley.gov.uk also complete a MARF. Head of DEX Service: Lorna Nolan.

Make a referral to Local Authority Children's Social Care directly, if appropriate (see 'Referral' below). Share any action taken with the DSL as soon as possible.

You can also seek advice at any time from the NSPCC helpline on 0808 800 5000. Share details of any actions you take with the DSL as soon as practically possible.

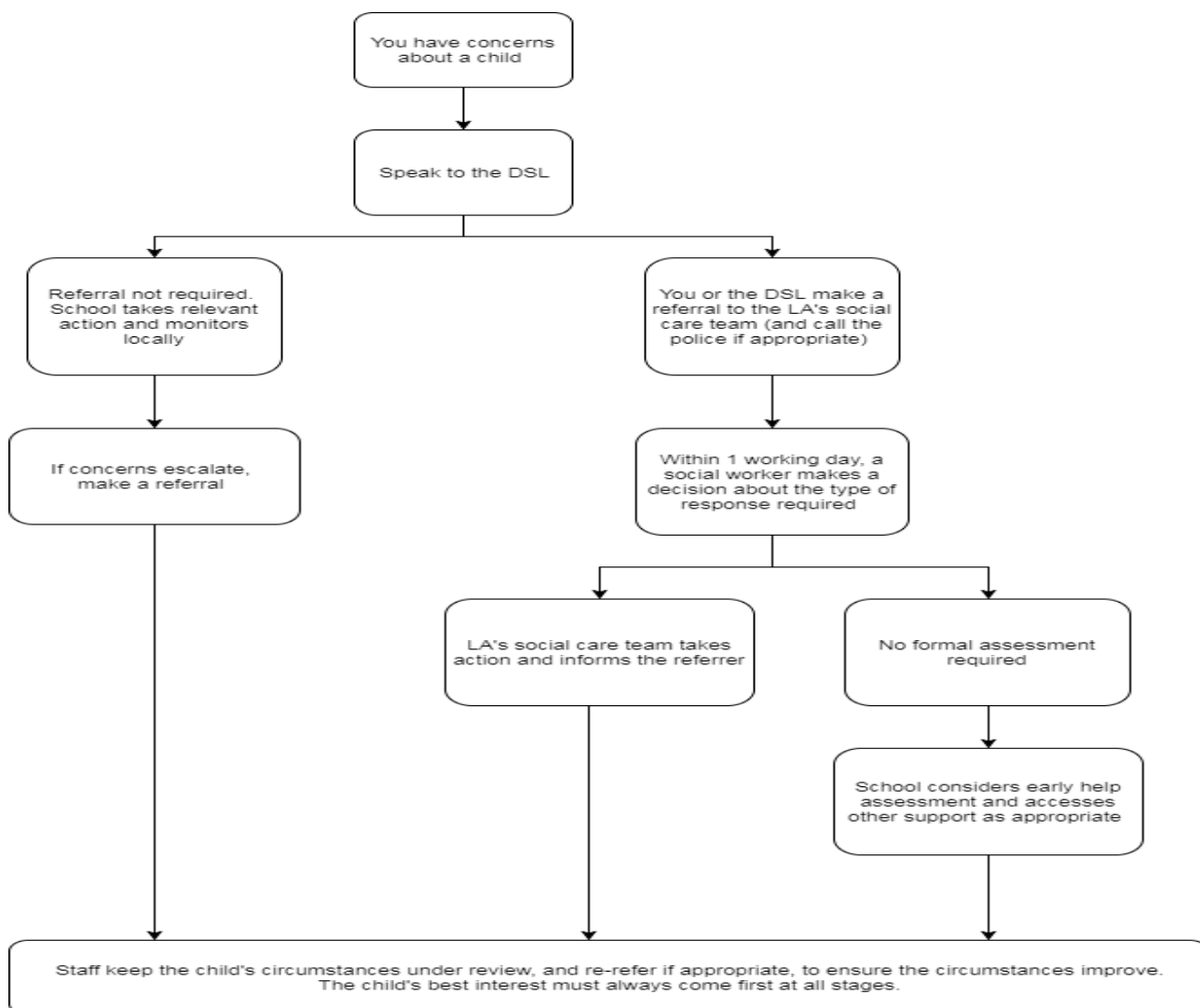
Referral

If it is appropriate to refer the case to Local Authority Children's Social Care or the Police, the DSL will make the referral or support you to do so. If you make a referral directly you must tell the DSL as soon as possible.

The Local Authority will decide within 1 working day of a referral about what course of action to take and will let the person who made the referral know the outcome. The DSL or person who made the referral must follow up with the Local Authority if this information is not made available, and ensure outcomes are properly recorded.

If the child's situation does not seem to be improving after the referral, the DSL or person who made the referral must follow local escalation procedures to ensure their concerns have been addressed and that the child's situation improves.

Figure 1: procedure if you have concerns about a child’s welfare (as opposed to believing a child is suffering or likely to suffer from harm, or in immediate danger) (Note – if the DSL is unavailable, this should not delay action.)



10. Dudley’s Thresholds and Early Help

If early help is appropriate, the DSL will generally lead on liaising with other agencies and setting up an inter-agency assessment as appropriate. Staff may be required to support other agencies and professionals in an early help assessment, in some cases acting as the lead practitioner.

The DSL will keep the case under constant review and the school will consider a referral to local authority children’s social care if the situation does not seem to be improving. Timelines of interventions will be monitored and reviewed.

Level 1 - No referral is required. Professionals should contact Dudley’s Family information Service on 01384 814398 to obtain information about support available for children, young people and families.

Dudley Safeguarding Partnership threshold guidance is below, this should be considered when completing Request for Help and Support Form

Or contact **Brierley Hill Family Centre** for further advice.

18 Parkes Street, BRIERLEY HILL, West Midlands. DY5 3DY

Telephone 01384 813322

E-Mail fs.brierleyhill@dudley.gov.uk

11. When to be concerned

All staff, but especially the DSL/deputies should consider whether children are at risk of abuse or exploitation in situations outside their families. Extra- familial harms take a variety of different forms and children can be vulnerable to multiple harms including (but not limited to) sexual abuse (including harassment and exploitation), domestic abuse in their own intimate relationships (teenage relationship abuse), criminal exploitation, serious youth violence, county lines and radicalisation.

Abuse: a form of maltreatment of a child. Somebody may abuse or neglect a child by inflicting harm or by failing to act to prevent harm. Harm can include ill treatment that is not physical as well as the impact of witnessing ill treatment of others. This can be particularly relevant, for example, in relation to the impact on children of all forms of domestic abuse. Children may be abused in a family or in an institutional or community setting by those known to them or, more rarely, by others. Abuse can take place wholly online, or technology may be used to facilitate offline abuse. Children may be abused by an adult or adults or by another child or children.

Signs and Symptoms of Abuse

Abuse, including neglect, and safeguarding issues are rarely standalone events that can be covered by one definition or label. In most cases, multiple issues will overlap.

Physical abuse may involve hitting, shaking, throwing, poisoning, burning or scalding, drowning, suffocating or otherwise causing physical harm to a child. Physical harm may also be caused when a parent or carer fabricates the symptoms of, or deliberately induces, illness in a child.

Emotional abuse is the persistent emotional maltreatment of a child such as to cause severe and adverse effects on the child's emotional development. Some level of emotional abuse is involved in all types of maltreatment of a child, although it may occur alone.

Emotional abuse may involve:

- Conveying to a child that they are worthless or unloved, inadequate, or valued only insofar as they meet the needs of another person
- Not giving the child opportunities to express their views, deliberately silencing them or 'making fun' of what they say or how they communicate
- Age or developmentally inappropriate expectations being imposed on children. These may include interactions that are beyond a child's developmental capability, as well as overprotection and limitation of exploration and learning, or preventing the child participating in normal social interaction
- Seeing or hearing the ill-treatment of another
- Serious bullying (including cyberbullying), causing children frequently to feel frightened or in danger, or the exploitation or corruption of children

Sexual abuse involves forcing or enticing a child or young person to take part in sexual activities, not necessarily involving a high level of violence, whether the child is aware of what is happening.

The activities may involve:

- Physical contact, including assault by penetration (for example rape or oral sex) or non-penetrative acts such as masturbation, kissing, rubbing and touching outside of clothing
- Non-contact activities, such as involving children in looking at, or in the production of, sexual images, watching sexual activities, encouraging children to behave in sexually inappropriate ways, or grooming a child in preparation for abuse (including via the internet)

Sexual abuse is not solely perpetrated by adult males. Women can also commit acts of sexual abuse, as can other children.

Neglect is the persistent failure to meet a child's basic physical and/or psychological needs, likely to result in the serious impairment of the child's health or development. Neglect may occur during pregnancy as a result of maternal substance abuse.

Once a child is born, neglect may involve a parent or carer failing to:

- Provide adequate food, clothing and shelter (including exclusion from home or abandonment)
- Protect a child from physical and emotional harm or danger
- Ensure adequate supervision (including the use of inadequate caregivers)
- Ensure access to appropriate medical care or treatment

It may also include neglect of, or unresponsiveness to, a child's basic emotional needs.

12. Specific Safeguarding Issues

Child on Child abuse

We recognise that children can abuse their peers. Abuse will never be tolerated or passed off as "banter", "just having a laugh" or "part of growing up".

Child on child abuse may manifest in the following ways:

- Physical abuse
- Verbal abuse
- Online abuse
- Emotional abuse
- Sexual violence and sexual harassment
- Sexting (also known as youth produced sexual imagery)
- Initiation/hazing type violence and rituals

We also recognise the gendered nature of child on child abuse. However, all child on child abuse is unacceptable and will be taken seriously.

Most cases of pupils hurting other pupils will be dealt with under our school's behaviour policy, but this child protection and safeguarding policy will apply to any allegations that raise safeguarding concerns. This might include where the alleged behaviour:

- Is serious, and potentially a criminal offence
- Could put pupils in the school at risk
- Is violent
- Involves pupils being forced to use drugs or alcohol
- Involves sexual exploitation, sexual abuse or sexual harassment, such as indecent exposure, sexual assault, up skirting or sexually inappropriate pictures or videos (including sexting)

If a pupil makes an allegation of abuse against another pupil:

The initial response to a report from a child is important. It is essential that all victims are reassured that they are being taken seriously and that they will be supported and kept safe.

- You must record the allegation and tell the DSL, but do not investigate it
- The DSL will contact the Local Authority Children's Social Care team and follow its advice, as well as the police if the allegation involves a potential criminal offence
- The DSL will put a risk assessment and support plan into place for all children involved (including the victim(s), the child(ren) against whom the allegation has been made and any others affected) with a named person they can talk to if needed
- The DSL will contact the Children and Adolescent Mental Health Services (CAMHS), if appropriate

We will minimise the risk of child-on-child abuse by:

- Challenging any form of derogatory or sexualised language or behaviour, including requesting or sending sexual images
- Being vigilant to issues that particularly affect different genders – for example, sexualised or aggressive touching or grabbing towards female pupils, and initiation or hazing type violence with respect to boys
- Ensuring our curriculum helps to educate pupils about appropriate behaviour and consent. The school has an ethos of promoting friendship and cooperation.
- Ensuring pupils know they can talk to staff confidentially by making children aware through assemblies, Relationships and Sex Education (RSE), Rights Respecting Schools and Circle time activities.
- Ensuring staff are trained to understand that a pupil harming a peer could be a sign that the child is being abused themselves, and that this would fall under the scope of this policy

Consensual and Non-Consensual sharing of indecent images

Electronic forms of communication have developed rapidly in recent years and the vast majority of children have access to a computer and or mobile phone. Children are frequently exposed to internet abuse including sexual abuse and bullying by phone is on the increase. Any child thought to be the victim of such abuse should therefore be regarded as in need of protection whether deemed to be consensual or non consensual.

https://assets.publishing.service.gov.uk/government/uploads/system/uploads/attachment_data/file/75900/7/6_2939_SP_NCA_Sexting_In_Schools_FINAL_Update_Jan17.pdf

This is a suggested approach based on guidance from the UK Council for Child Internet Safety for [all staff](#) 2017 and for [DSLs and senior leaders](#).

Your responsibilities when responding to an incident

If you are made aware of an incident involving sexting (also known as 'youth produced sexual imagery'), you must report it to the DSL immediately.

You must **not**:

- View, download or share the imagery yourself, or ask a pupil to share or download it. If you have already viewed the imagery by accident, you must report this to the DSL

- Delete the imagery or ask the pupil to delete it
- Ask the pupil(s) who are involved in the incident to disclose information regarding the imagery (this is the DSL's responsibility)
- Share information about the incident with other members of staff, the pupil(s) it involves or their, or other, parents and/or carers
- Say or do anything to blame or shame any young people involved

You should explain that you need to report the incident and reassure the pupil(s) that they will receive support and help from the DSL.

Initial review meeting

Following a report of an incident, the DSL will hold an initial review meeting with appropriate school staff. This meeting will consider the initial evidence and aim to determine:

- Whether there is an immediate risk to pupil(s)
- If a referral needs to be made to the police and/or children's social care
- If it is necessary to view the imagery in order to safeguard the young person (in most cases, imagery should not be viewed)
- What further information is required to decide on the best response
- Whether the imagery has been shared widely and via what services and/or platforms (this may be unknown)
- Whether immediate action should be taken to delete or remove images from devices or online services
- Any relevant facts about the pupils involved which would influence risk assessment
- If there is a need to contact another school, college, setting or individual
- Whether to contact parents or carers of the pupils involved (in most cases parents should be involved)

The DSL will make an immediate referral to police and/or children's social care if:

- The incident involves an adult
- There is reason to believe that a young person has been coerced, blackmailed or groomed, or if there are concerns about their capacity to consent (for example owing to special educational needs)
- What the DSL knows about the imagery suggests the content depicts sexual acts which are unusual for the young person's developmental stage, or are violent
- The imagery involves sexual acts and any pupil in the imagery is under 13
- The DSL has reason to believe a pupil is at immediate risk of harm owing to the sharing of the imagery (for example, the young person is presenting as suicidal or self-harming)

If none of the above apply then the DSL, in consultation with the headteacher and other members of staff as appropriate, may decide to respond to the incident without involving the police or children's social care.

Further review by the DSL

If at the initial review stage, a decision has been made not to refer to police and/or children's social care, the DSL will conduct a further review.

They will hold interviews with the pupils involved (if appropriate) to establish the facts and assess the risks.

If at any point in the process there is a concern that a pupil has been harmed or is at risk of harm, a referral will be made to children's social care and/or the police immediately.

Informing parents

The DSL will inform parents at an early stage and keep them involved in the process, unless there is a good reason to believe that involving them would put the pupil at risk of harm.

Referring to the police

If it is necessary to refer an incident to the police, this will be done through dialing 101.

Recording incidents

All sexting incidents and the decisions made in responding to them will be recorded. The record-keeping arrangements set out in section 10 of this policy also apply to recording incidents of sexting.

This policy on sexting is also shared with pupils involved so they are aware of the processes the school will follow in the event of an incident.

Female Genital Mutilation - If you discover that FGM has taken place or a pupil is at risk of FGM

The Department for Education's Keeping Children Safe in Education explains that FGM comprises '*all procedures involving partial or total removal of the external female genitalia, or other injury to the female genital organs.*'

FGM is illegal in the UK and a form of child abuse with long-lasting, harmful consequences. It is also known as 'female genital cutting', 'circumcision' or 'initiation'.

Any teacher who discovers (either through disclosure by the victim or visual evidence) that an act of FGM appears to have been carried out on a pupil under 18 must immediately report this to the police, personally. This is a statutory duty, and teachers will face disciplinary sanctions for failing to meet it.

Unless they have been specifically told not to disclose, they should also discuss the case with the DSL and involve children's social care as appropriate.

Any other member of staff who discovers that an act of FGM appears to have been carried out on a **pupil under 18** must speak to the DSL and follow our local safeguarding procedures.

The duty for teachers mentioned above does not apply in cases where a pupil is *at risk* of FGM or FGM is suspected but is not known to have been carried out. Staff should not examine pupils.

Any member of staff who suspects a pupil is *at risk* of FGM or suspects that FGM has been carried out must speak to the DSL and follow our local safeguarding procedures.

The DSL will make sure that staff have access to appropriate training to equip them to be alert to children affected by FGM or at risk of FGM.

Section 7.3 of this policy sets out the procedures to be followed if a staff member discovers that an act of FGM appears to have been carried out or suspects that a pupil is at risk of FGM.

Indicators that FGM has already occurred include:

- A pupil confiding in a professional that FGM has taken place
- A mother/family member disclosing that FGM has been carried out
- A family/pupil already being known to social services in relation to other safeguarding issues

A girl:

- Having difficulty walking, sitting or standing, or looking uncomfortable
- Finding it hard to sit still for long periods of time (where this was not a problem previously)

- Spending longer than normal in the bathroom or toilet due to difficulties urinating
- Having frequent urinary, menstrual or stomach problems
- Avoiding physical exercise or missing PE
- Being repeatedly absent from school, or absent for a prolonged period
- Demonstrating increased emotional and psychological needs – for example, withdrawal or depression, or significant change in behaviour
- Being reluctant to undergo any medical examinations
- Asking for help, but not being explicit about the problem
- Talking about pain or discomfort between her legs

Potential signs that a pupil may be at risk of FGM include:

- The girl's family having a history of practicing FGM (this is the biggest risk factor to consider)
- FGM being known to be practiced in the girl's community or country of origin
- A parent or family member expressing concern that FGM may be carried out
- A family not engaging with professionals (health, education or other) or already being known to social care in relation to other safeguarding issues

A girl:

- Having a mother, older sibling or cousin who has undergone FGM
- Having limited level of integration within UK society
- Confiding to a professional that she is to have a "special procedure" or to attend a special occasion to "become a woman"
- Talking about a long holiday to her country of origin or another country where the practice is prevalent, or parents stating that they or a relative will take the girl out of the country for a prolonged period
- Requesting help from a teacher or another adult because she is aware or suspects that she is at immediate risk of FGM
- Talking about FGM in conversation – for example, a girl may tell other children about it (although it is important to consider the context of the discussion)
- Being unexpectedly absent from school
- Having sections missing from her 'red book' (child health record) and/or attending a travel clinic or equivalent for vaccinations/anti-malarial medication

The above indicators and risk factors are not intended to be exhaustive.

Honour Based Abuse (including Forced Marriage)

So-called 'honour-based' abuse (HBA) encompasses incidents or crimes committed to protect or defend the honour of the family and/or community, including FGM, forced marriage, and practices such as breast ironing.

Abuse committed in this context often involves a wider network of family or community pressure and can include multiple perpetrators.

All forms of HBA are abuse and will be handled and escalated as such. All staff will be alert to the possibility of a child being at risk of HBA or already having suffered it. If staff have a concern, they will speak to the DSL, who will activate local safeguarding procedures.

Forced Marriage

Implementation of the Marriage and Civil Partnership (Minimum Age) Act 2022, Since February 2023 it has been a crime to carry out any conduct whose purpose is to cause a child to marry before their eighteenth birthday, even if violence, threats or another form of coercion are not used.

Forcing a person into marriage is a crime. A forced marriage is one entered without the full and free consent of one or both parties and where violence, threats, or any other form of coercion is used to cause a person to enter a marriage. Threats can be physical or emotional and psychological.

Staff will receive training around forced marriage and the presenting symptoms. We are aware of the 'one chance' rule, i.e. we may only have one chance to speak to the potential victim and only one chance to save them.

If a member of staff suspects that a pupil is being forced into marriage, they will speak to the pupil about their concerns in a secure and private place. They will then report this to the DSL.

The DSL will:

- Speak to the pupil about the concerns in a secure and private place
- Activate the local safeguarding procedures and refer the case to the local authority's designated officer
- Seek advice from the Forced Marriage Unit on 020 7008 0151 or fm@fco.gov.uk
- Refer the pupil to an education welfare officer, pastoral tutor, learning mentor, or school counsellor, as appropriate

Child Criminal Exploitation

Child criminal exploitation (CCE) is a form of abuse where an individual or group takes advantage of an imbalance of power to coerce, control, manipulate or deceive a child into criminal activity, in exchange for something the victim needs or wants, and/or for the financial or other advantage of the perpetrator or facilitator, and/or through violence or the threat of violence.

The abuse can be perpetrated by males or females, and children or adults. It can be a one-off occurrence or a series of incidents over time and range from opportunistic to complex organised abuse.

The victim can be exploited even when the activity appears to be consensual. It does not always involve physical contact and can happen online. For example, young people may be trafficked, forced to work in cannabis factories, modern slavery, coerced into moving drugs or money across the country (county lines), involved in gangs and knife crime, forced to shoplift or pickpocket, or to threaten other young people.

Indicators of CCE can include a child:

- Appearing with unexplained gifts or new possessions
- Associating with other young people involved in exploitation
- Involved in gangs and knife crime
- Suffering from changes in emotional wellbeing
- Misusing drugs and alcohol
- Going missing for periods of time or regularly coming home late
- Regularly missing school or education
- Not taking part in education

If a member of staff suspects CCE, they will discuss this with the DSL. The DSL will trigger the local safeguarding procedures, including a referral to the local authority's children's social care team and the police, if appropriate.

Child Sexual Exploitation

Child sexual exploitation (CSE) is a form of abuse where an individual or group takes advantage of an imbalance of power to coerce, manipulate or deceive a child into sexual activity, in exchange for something the victim needs or wants and/or for the financial advantage or increased status of the perpetrator or facilitator. It may, or may not, be accompanied by violence or threats of violence.

The abuse can be perpetrated by males or females, and children or adults. It can be a one-off occurrence or a series of incidents over time and range from opportunistic to complex organised abuse.

The victim can be exploited even when the activity appears to be consensual. Children or young people who are being sexually exploited may not understand that they are being abused. They often trust their abuser and may be tricked into believing they are in a loving, consensual relationship.

CSE can include both physical contact (penetrative and non-penetrative acts) and non-contact sexual activity. It can also happen online. For example, young people may be persuaded or forced to share sexually explicit images of themselves, have sexual conversations by text, or take part in sexual activities using a webcam. CSE may also occur without the victim's immediate knowledge, for example through others copying videos or images.

In addition to the CCE indicators above, indicators of CSE can include a child:

- Having an older boyfriend or girlfriend
- Suffering from sexually transmitted infections or becoming pregnant

If a member of staff suspects CSE, they will discuss this with the DSL. The DSL will trigger the local safeguarding procedures, including a referral to the local authority's children's social care team and the police, if appropriate.

Children Absent (Missing) from Education

A child absent from education, particularly repeatedly, can be a warning sign of a range of safeguarding issues. This might include abuse or neglect, such as sexual abuse or exploitation or child criminal exploitation, or issues such as mental health problems, substance abuse, radicalisation, FGM or forced marriage.

There are many circumstances where a child may become missing from education, but some children are particularly at risk. These include children who:

- Are at risk of harm or neglect
- Are at risk of forced marriage or FGM
- Come from Gypsy, Roma, or Traveller families
- Come from the families of service personnel
- Go missing or run away from home or care
- Are supervised by the youth justice system
- Cease to attend a school
- Come from new migrant families

We will follow our procedures for unauthorised absence and for dealing with children who go missing from education, particularly on repeat occasions, to help identify the risk of abuse and neglect, including sexual exploitation, and to help prevent the risks of going missing in future. This includes

informing the local authority if a child leaves the school without a new school being named and adhering to requirements with respect to sharing information with the local authority, when applicable, when removing a child's name from the admission register at non-standard transition points.

Staff will be trained in signs to look out for and the individual triggers to be aware of when considering the risks of potential safeguarding concerns which may be related to being missing, such as travelling to conflict zones, FGM and forced marriage.

If a staff member suspects that a child is suffering from harm or neglect, we will follow local child protection procedures, including with respect to making reasonable enquiries. We will make an immediate referral to the local authority children's social care team, and the police, if the child is suffering or likely to suffer from harm, or in immediate danger.

For further information: Children Missing Education statutory guidance for local authorities 2016
https://assets.publishing.service.gov.uk/government/uploads/system/uploads/attachment_data/file/550416/Children_Missing_Education_-_statutory_guidance.pdf

<https://www.gov.uk/government/publications/working-together-to-improve-school-attendance>

Missing pupils

Our procedures are designed to ensure that a missing child is found and returned to effective supervision as soon as possible. If a child goes missing, we will contact and work with parents, Children's Services and the Police as required.

Records will be recorded and stored on CPOMs.

County Lines

Criminal exploitation of children is a geographically widespread form of harm that is a typical feature of county lines criminal activity: drug networks or gangs groom and exploit children and young people to carry drugs and money from urban areas to suburban and rural areas, market and seaside towns. Key to identifying potential involvement in county lines are missing episodes, when the victim may have been trafficked for the purpose of transporting drugs and a referral to the National Referral Mechanism should be considered.

Like other forms of abuse and exploitation, county lines exploitation:

- can affect any child or young person (male or female) under the age of 18 years
- can affect any vulnerable adult over the age of 18 year
- can still be exploitation even if the activity appears consensual
- can involve force and/or enticement-based methods of compliance and is often accompanied by violence or threats of violence
- can be perpetrated by individuals or groups, males or females, and young people or adults; and
- is typified by some form of power imbalance in favour of those perpetrating the exploitation. Whilst age may be the most obvious, this power imbalance can also be due to a range of other factors including gender, cognitive ability, physical strength, status, and access to economic or other resources.

Homelessness

Being homeless or being at risk of becoming homeless presents a real risk to a child's welfare.

The DSL and deputies will be aware of contact details and referral routes into the local housing authority so they can raise/progress concerns at the earliest opportunity (where appropriate and in accordance with local procedures).

Where a child has been harmed or is at risk of harm, the DSL will also make a referral to children's social care.

Domestic Abuse

Children can witness and be adversely affected by domestic abuse and/or violence at home where it occurs between family members. In some cases, a child may blame themselves for the abuse or may have had to leave the family home as a result.

Exposure to domestic abuse and/or violence can have a serious, long-lasting emotional and psychological impact on children. This can include, but is not limited to psychological, physical, sexual, financial and emotional types of abuse. Children are classified as victims in their own right.

If police are called to an incident of domestic abuse and any children in the household have experienced the incident, the police will inform the key adult in school (usually the designated safeguarding lead) before the child or children arrive at school the following day. West Midlands police forces are part of [Operation Encompass](#)

The DSL will provide support according to the child's needs and update records about their circumstances.

Child on Child Sexual Violence and Sexual Harassment

Sexual violence and sexual harassment can occur between two children of any age and sex. It can also occur through a group of children sexually assaulting or sexually harassing a single child or group of children. Sexual violence and sexual harassment exist on a continuum and may overlap; they can occur online and face to face (both physically and verbally) and are never acceptable.

Responding to reports of sexual violence and sexual harassment

Reports of sexual violence and sexual harassment are likely to be complex and require difficult professional decisions to be made, often quickly and under pressure. Preplanning, effective training and effective policies will provide schools and colleges with the foundation for a calm, considered and appropriate response to any reports.

Ultimately, the school will make any decisions on a case-by-case basis, with the designated safeguarding lead (or a deputy) taking a leading role and using their professional judgement, supported by other agencies, such as children's social care and the police as required.

It is important that all victims are taken seriously and offered appropriate support.

Staff should be aware of the importance of:

- making clear that sexual violence and sexual harassment is not acceptable, will never be tolerated and is not an inevitable part of growing up;
- not tolerating or dismissing sexual violence or sexual harassment as "banter", "part of growing up", "just having a laugh" or "boys being boys"; and challenging behaviours (potentially criminal in nature), such as grabbing bottoms, breasts and genitalia, flicking bras and lifting up skirts. Dismissing or tolerating such behaviours risks normalising them.

Children who are victims of sexual violence and sexual harassment will likely find the experience stressful and distressing. This will, in all likelihood, adversely affect their educational attainment and will be exacerbated if the alleged perpetrator(s) attends the same school.

If a victim reports an incident, it is essential that staff make sure they are reassured that they are being taken seriously and that they will be supported and kept safe. A victim should never be given the impression that they are creating a problem by reporting any form of abuse or neglect. Nor should a victim ever be made to feel ashamed for making a report.

When supporting victims, staff will:

- ✓ Reassure victims that the law on child-on-child abuse is there to protect them, not criminalise them
- ✓ Regularly review decisions and actions, and update policies with lessons learnt
- ✓ Look out for potential patterns of concerning, problematic or inappropriate behaviour, and decide on a course of action where we identify any patterns
- ✓ Consider if there are wider cultural issues within the school that enabled inappropriate behaviour to occur and whether revising policies and/or providing extra staff training could minimise the risk of it happening again
- ✓ Remain alert to the possible challenges of detecting signs that a child has experienced sexual violence, and show sensitivity to their needs

Some groups are potentially more at risk. Evidence shows that girls, children with SEN and/or disabilities, and lesbian, gay, bisexual and transgender (LGBT) children are at greater risk.

Staff should be aware of the importance of:

- ✓ Challenging inappropriate behaviours
- ✓ Making clear that sexual violence and sexual harassment is not acceptable, will never be tolerated and is not an inevitable part of growing up
- ✓ Challenging physical behaviours (potentially criminal in nature), such as grabbing bottoms, breasts and genitalia, pulling down trousers, flicking bras and lifting up skirts. Dismissing or tolerating such behaviours risks normalising them

If staff have any concerns about sexual violence or sexual harassment, or a child makes a report to them, they will follow the reporting procedures within school ensuring that the DSL is informed immediately.

Upskirting

The Voyeurism (Offences) Act which is commonly known as the Upskirting Act, came into force on 12 April 2019. 'Upskirting' typically involves taking a picture under a person's clothing without them knowing, with the intention of viewing their genitals or buttocks to obtain sexual gratification, or cause the victim humiliation, distress or alarm. It is a criminal offence. Anyone of any gender, can be a victim.

Radicalisation and Extremism

- **Radicalisation** refers to the process by which a person comes to support terrorism and extremist ideologies associated with terrorist groups
- **Extremism** is vocal or active opposition to fundamental British values, such as democracy, the rule of law, individual liberty, and mutual respect and tolerance of different faiths and beliefs. This also includes calling for the death of members of the armed forces
- **Terrorism** is an action that:
 - Endangers or causes serious violence to a person/people;
 - Causes serious damage to property; or
 - Seriously interferes or disrupts an electronic system

The use or threat of terrorism must be designed to influence the government or to intimidate the public and is made for the purpose of advancing a political, religious or ideological cause.

Schools have a duty to prevent children from being drawn into terrorism. The DSL will undertake Prevent awareness training and make sure that staff have access to appropriate training to equip them to identify children at risk.

We will assess the risk of children in our school being drawn into terrorism. This assessment will be based on an understanding of the potential risk in our local area, in collaboration with our local safeguarding partners and local police force.

We will ensure that suitable internet filtering is in place and equip our pupils to stay safe online at school and at home.

There is no single way of identifying an individual who is likely to be susceptible to an extremist ideology. Radicalisation can occur quickly or over a long period.

Staff will be alert to changes in pupils' behaviour.

The government website [Educate Against Hate](#) and charity [NSPCC](#) say that signs that a pupil is being radicalised can include:

- Refusal to engage with, or becoming abusive to, peers who are different from themselves
- Becoming susceptible to conspiracy theories and feelings of persecution
- Changes in friendship groups and appearance
- Rejecting activities, they used to enjoy
- Converting to a new religion
- Isolating themselves from family and friends
- Talking as if from a scripted speech
- An unwillingness or inability to discuss their views
- A sudden disrespectful attitude towards others
- Increased levels of anger
- Increased secretiveness, especially around internet use
- Expressions of sympathy for extremist ideologies and groups, or justification of their actions
- Accessing extremist material online, including on Facebook or Twitter
- Possessing extremist literature
- Being in contact with extremist recruiters and joining, or seeking to join, extremist organisations

Children who are at risk of radicalisation may have low self-esteem or be victims of bullying or discrimination. It is important to note that these signs can also be part of age related behaviours, however staff should have confidence in their instincts and seek advice if something feels wrong.

If staff are concerned about a pupil, they will follow our reporting procedures including discussing their concerns with the DSL.

Staff should **always** act if they are worried.

Ashwood Park Primary School is actively involved in the Prevent strategy. The school has a part to play in fostering shared values and promoting cohesion. Extremist ideology runs counter to the school and British values. Therefore our community aims to successfully promote respect and tolerance for others, the rights of all to live and study free from persecution of any kind, freedom of speech, democracy, the rule of law and equality of opportunity and treatment. Extremism promotes fear and division and actively seeks to cause destructive relationships between different communities. Our school strategy for preventing extremism has five key objectives:

1. To promote and reinforce school and British values; to create space for free and open debate; listen and support the learner voice and enable pupils to develop their self-knowledge, self-esteem and self-confidence.
2. To promote social cohesion by supporting inter-faith and inter-cultural dialogue and understanding, and to engage all students in playing a full and active role in wider engagement in society.
3. To ensure pupil safety and that the school is free from bullying, harassment and discrimination.
4. To provide support for pupils who may be at risk and offer appropriate sources of advice and guidance.
5. To ensure that pupils and staff are aware of their roles and responsibilities in preventing terrorism and radicalisation.

If you have concerns about extremism

If a child is suffering or likely to suffer from harm, or in immediate danger, where possible speak to the DSL first to agree a course of action.

If in exceptional circumstances the DSL is not available, this should not delay appropriate action being taken. Speak to a member of the senior leadership team and/or seek advice from local authority children's social care. Make a referral to local authority children's social care directly, if appropriate (see 'Referral' above). Inform the DSL or deputy as soon as practically possible after the referral.

Where there is a concern, the DSL will consider the level of risk and decide which agency to make a referral to. This could include [Channel](#), the government's programme for identifying and supporting individuals at risk of being drawn into terrorism, or the local authority children's social care team.

For Prevent referrals the DSL will liaise with safe and sound.

<https://www.dudleysafeandsound.org/prevent>

Mark Wilson is Dudley's Prevent Co-ordinator.

Department for Education also has a dedicated telephone helpline, 020 7340 7264, which school staff and governors can call to raise concerns about extremism with respect to a pupil. You can also email counter.extremism@education.gov.uk. Note that this is not for use in emergency situations.

In an emergency, call 999 or the confidential anti-terrorist hotline on 0800 789 321 if you:

- Think someone is in immediate danger
- Think someone may be planning to travel to join an extremist group
- See or hear something that may be terrorist-related

Mental Health - If you have a mental health concern

Mental health problems can, in some cases, be an indicator that a child has suffered or is at risk of suffering abuse, neglect or exploitation.

Staff will be alert to behavioural signs that suggest a child may be experiencing a mental health problem or be at risk of developing one.

If you have a mental health concern about a child that is also a safeguarding concern, take immediate action.

If you have a mental health concern that is **not** also a safeguarding concern, speak to the DSL to agree a course of action.

Positive mental health is a concern of the whole community and is embedded in our curriculum. Our school promotes the development of emotional well-being and resilience in all pupils and staff, as well

as providing support for those with additional needs. Staff members are trained in mental health and we work closely with mentoring and counselling services.

We understand that there are risk factors, which increase someone's vulnerability, and protective factors that can promote or strengthen resiliency. The more risk factors present in an individual's life, the more protective factors or supportive interventions are required to counter balance and promote further growth of resilience.

It is vital that we work in partnership with parents to support the well-being of our pupils. Parents should share any concerns about the well-being of their child with school, so appropriate support and intervention is identified and implemented.

The DSL will work closely with Senior Mental Health Leads.

Department for Education guidance on [mental health and behaviour in schools](#) for more information.

13. LGBT+ pupils

The fact that a child or a young person may be LGBT is not in itself an inherent risk factor for harm. However, children who are LGBT can be targeted by other children. In some cases, a child who is perceived by other children to be LGBT (whether they are or not) can be just as vulnerable as children who identify as LGBT. Risks can be compounded where children who are LGBT lack a trusted adult with whom they can be open. It is therefore vital that staff endeavor to reduce the additional barriers faced, and provide a safe space for them to speak out to share their concerns with members of staff

Some pupils may be vulnerable due to their sexual orientation or gender identity, either because they are subject to homophobic, bi-phobic or transphobic bullying or because of negative responses from parents/carers or others, which may result in increased risk of self-harm, suicide or homelessness.

Several studies also evidence that LGBT+ young people may be at increased risk of becoming victims of CSE.

At Ashwood Park we are aware of the increased risk factors and know how to access appropriate support for these young people when required.

LGBT inclusion is part of the statutory RSE and Health Education curriculum.

14. Online Safety

The use of technology has become a significant component of many safeguarding issues. Child sexual exploitation; radicalisation; sexual predation: technology often provides the platform that facilitates harm.

Filtering and monitoring systems (Smoothwall) are in place at Ashwood Park on school devices and the school network, which report concerns to the Designated and Deputy Safeguarding Leads.

Further details on Online safety can be found in Ashwood Park's E Safety Policy

WE have put in place robust filtering and monitoring systems to limit children's exposure to the 4 key categories of risk from the school's IT systems.

The 4 key categories of risk

Our approach to online safety is based on addressing the following categories of risk:

- **Content** – being exposed to illegal, inappropriate or harmful content, such as pornography, fake news, racism, misogyny, self-harm, suicide, antisemitism, radicalisation and extremism
- **Contact** – being subjected to harmful online interaction with other users, such as peer-to-peer pressure, commercial advertising and adults posing as children or young adults with the intention to groom or exploit them for sexual, criminal, financial or other purposes

- **Conduct** – personal online behaviour that increases the likelihood of, or causes, harm, such as making, sending and receiving explicit images (e.g. consensual and non-consensual sharing of nudes and semi-nudes and/or pornography), sharing other explicit images and online bullying; and
- **Commerce** – risks such as online gambling, inappropriate advertising, phishing and/or financial scams

At Ashwood Park Primary we:

- Educate pupils about online safety as part of our curriculum. For example through computing modules, RSE and PSHE lessons. This includes the safe use of social media, the internet and technology, keeping personal information private, how to recognise unacceptable behaviour online and how to report any incidents of cyber-bullying.
- Train staff, as part of their induction, on safe internet use and online safeguarding issues including cyber-bullying, the risks of online radicalisation, and the expectations, roles and responsibilities around filtering and monitoring. All staff members will receive refresher training as required and at least once each academic year
- Educate parents/carers about online safety via our website, communications sent directly to them and during parents' evenings. We facilitate awareness training sessions for parents.
- Make sure staff are aware of any restrictions placed on them with regards to the use of their mobile phone and cameras, for example that: staff are allowed to bring their personal phones to school for their own use, but will limit such use to non-contact time when pupils are not present
- Staff will not take pictures or recordings of pupils on their personal phones or cameras

Screening and confiscation guidance

https://assets.publishing.service.gov.uk/government/uploads/system/uploads/attachment_data/file/1091132/Screening_Screening_and_Confiscation_guidance_July_2022.pdf

Teaching Online Safety in schools 2019

https://assets.publishing.service.gov.uk/government/uploads/system/uploads/attachment_data/file/811796/Teaching_online_safety_in_school.pdf

15. Children in Care (CiC) and Post Children in Care

Designated person should aim to work in partnership with the Virtual School Coordinator on how funding can best support the progress of a CiC. The name of the Virtual Headteacher is Emma Thomas Emma.Thomas@dudley.gov.uk

We will ensure that staff have the skills, knowledge and understanding to keep Children in Care and previous Children in Care safe. We will ensure that:

- Appropriate staff have relevant information about Children in Care's looked after legal status, contact arrangements with birth parents or those with parental responsibility, and care arrangements
- The DSL has details of children's social workers and relevant virtual school heads
- We have appointed a designated teacher, Jane Lister, who is responsible for promoting the educational achievement of Children in Care and previous Children in Care in line with [statutory guidance](#).
- The designated teacher is appropriately trained and has the relevant qualifications and experience to perform the role.

As part of their role, the designated teacher will:

- Work closely with the DSL to ensure that any safeguarding concerns regarding Children in Care and previous Children in Care are quickly and effectively responded to

- Work with virtual school heads to promote the educational achievement of, Children in Care and previous Children in Care, including discussing how pupil premium plus funding can be best used to support CiC and meet the needs identified in their personal education plans

Designated person should aim to work in partnership with the Virtual School Coordinator on how funding can best support the progress of a CiC

We will ensure that staff have the skills, knowledge and understanding to keep Children in Care and previous Children in Care safe. We will ensure that:

- Appropriate staff have relevant information about Children in Care's looked after legal status, contact arrangements with birth parents or those with parental responsibility, and care arrangements.

16. Pupils/students with a social worker

Pupils/students may need a social worker due to safeguarding or welfare needs. We recognise that a child's experiences of adversity and trauma can leave them vulnerable to further harm as well as potentially creating barriers to attendance, learning, behaviour and mental health.

The DSL and all members of staff will work with and support social workers to help protect vulnerable children.

Where we are aware that a pupil has a social worker, the DSL will always consider this fact to ensure any decisions are made in the best interests of the pupil's safety, welfare and educational outcomes. For example, it will inform decisions about:

- Responding to unauthorised absence or missing education where there are known safeguarding risks
- The provision of pastoral and/or academic support

17.Children with Special Educational Needs and Disabilities

We recognise that pupils with special educational needs (SEN) and disabilities can face additional safeguarding challenges. Additional barriers can exist when recognising abuse and neglect in this group, including:

- Assumptions that indicators of possible abuse such as behaviour, mood and injury relate to the child's disability without further exploration
- Pupils being more prone to peer group isolation than other pupils
- The potential for pupils with SEN and disabilities being disproportionately impacted by behaviours such as bullying, without outwardly showing any signs
- Communication barriers and difficulties in overcoming these barriers
- We offer extra pastoral support for pupils with SEN and disabilities through specialist support. Clarification around pupils with SEND and specialist support can be sort through the SENCO and teacher in Charge of the Resource Base for the Deaf.

SENDCO Mrs Caroline Francis

Lead Teacher for the Resource Base for the Deaf Mrs Erin Straw

18. Safer Recruitment procedure

The recruitment steps outlined below are based on part 3 of Keeping Children Safe in Education 2023.

To make sure we recruit suitable people, we will ensure that those involved in the recruitment and employment of staff to work with children have received appropriate safer recruitment training. At least

1 person conducting any interview for any post at the school will have undertaken safer recruitment training. This will cover, as a minimum, the contents of Keeping Children Safe in Education, and will be in line with local safeguarding procedures.

We have put the following steps in place during our recruitment and selection process to ensure we are committed to safeguarding and promoting the welfare of children.

Advertising

When advertising roles, we will make clear:

- Our school's commitment to safeguarding and promoting the welfare of children
- That safeguarding checks will be undertaken
- The safeguarding requirements and responsibilities of the role, such as the extent to which the role will involve contact with children
- Whether or not the role is exempt from the Rehabilitation of Offenders Act 1974 and the amendments to the Exceptions Order 1975, 2013 and 2020. If the role is exempt, certain spent convictions and cautions are 'protected', so they do not need to be disclosed, and if they are disclosed, we cannot take them into account

Application forms

- Our application forms will:
- Include a statement saying that it is an offence to apply for the role if an applicant is barred from engaging in regulated activity relevant to children (where the role involves this type of regulated activity)
- Include a copy of, or link to, our child protection and safeguarding policy

Shortlisting

Our shortlisting process will involve at least 2 people and will:

- Consider any inconsistencies and look for gaps in employment and reasons given for them
- Explore all potential concerns

Once we have shortlisted candidates, we will ask shortlisted candidates to complete a self-declaration of their criminal record or any information that would make them unsuitable to work with children, so that they have the opportunity to share relevant information and discuss it at interview stage. The information we will ask for includes:

- If they have a criminal history
- Whether they are included on the barred list
- Whether they are prohibited from teaching
- Information about any criminal offences committed in any country in line with the law as applicable in England and Wales
- Any relevant overseas information
- Sign a declaration confirming the information they have provided is true

We will also consider carrying out an online search on shortlisted candidates to help identify any incidents or issues that are publicly available online. Shortlisted candidates will be informed that we may carry out these checks as part of our due diligence process.

Seeking references and checking employment history

We will obtain references before interview. Any concerns raised will be explored further with referees and taken up with the candidate at interview.

When seeking references we will:

- Not accept open references
- Liaise directly with referees and verify any information contained within references with the referees
- Ensure any references are from the candidate's current employer and completed by a senior person. Where the referee is school based, we will ask for the reference to be confirmed by the headteacher/principal as accurate in respect to disciplinary investigations
- Obtain verification of the candidate's most recent relevant period of employment if they are not currently employed
 - Secure a reference from the relevant employer from the last time the candidate worked with children if they are not currently working with children
 - Compare the information on the application form with that in the reference and take up any inconsistencies with the candidate
 - Resolve any concerns before any appointment is confirmed

Interview and selection

When interviewing candidates, we will:

- Probe any gaps in employment, or where the candidate has changed employment or location frequently, and ask candidates to explain this
- Explore any potential areas of concern to determine the candidate's suitability to work with children
- Record all information considered and decisions made

Pre-appointment vetting checks

We will record all information on the checks carried out in the school's single central record (SCR). Copies of these checks, where appropriate, will be held in individuals' personnel files. We follow requirements and best practice in retaining copies of these checks, as set out below.

New staff

All offers of appointment will be conditional until satisfactory completion of the necessary pre-employment checks. When appointing new staff, we will:

- Verify their identity
- Obtain (via the applicant) an enhanced DBS certificate, including barred list information for those who will be engaging in regulated activity (see definition below). We will obtain the certificate before, or as soon as practicable after, appointment, including when using the DBS update service.
- Obtain a separate barred list check if they will start work in regulated activity before the DBS certificate is available
- Verify their mental and physical fitness to carry out their work responsibilities
- Verify their right to work in the UK. We will keep a copy of this verification for the duration of the member of staff's employment and for 2 years afterwards
- Verify their professional qualifications, as appropriate
- Ensure they are not subject to a prohibition order if they are employed to be a teacher
- Carry out further additional checks, as appropriate, on candidates who have lived or worked outside of the UK. These could include, where available:
- For all staff, including teaching positions: [criminal records checks for overseas applicants](#)

- For teaching positions: obtaining a letter from the professional regulating authority in the country where the applicant has worked, confirming that they have not imposed any sanctions or restrictions on that person, and/or are aware of any reason why that person may be unsuitable to teach

We will ensure that appropriate checks are carried out to ensure that individuals are not disqualified under the 2018 Childcare Disqualification Regulations and Childcare Act 2006. Where we take a decision that an individual falls outside of the scope of these regulations and we do not carry out such checks, we will retain a record of our assessment on the individual's personnel file. This will include our evaluation of any risks and control measures put in place, and any advice sought.

Regulated activity means a person who will be:

- Responsible, on a regular basis in a school or college, for teaching, training, instructing, caring for or supervising children; or
- Carrying out paid, or unsupervised unpaid, work regularly in a school or college where that work provides an opportunity for contact with children; or
- Engaging in intimate or personal care or overnight activity, even if this happens only once and regardless of whether they are supervised or not

Existing staff

In certain circumstances we will carry out all the relevant checks on existing staff as if the individual was a new member of staff. These circumstances are when:

- There are concerns about an existing member of staff's suitability to work with children; or
- An individual moves from a post that is not regulated activity to one that is; or
- There has been a break in service of 12 weeks or more
- We will refer to the DBS anyone who has harmed, or poses a risk of harm, to a child or vulnerable adult where:
 - We believe the individual has engaged in [relevant conduct](#); or
 - We believe the individual has received a caution or conviction for a relevant (automatic barring either with or without the right to make representations) offence, under the [Safeguarding Vulnerable Groups Act 2006 \(Prescribed Criteria and Miscellaneous Provisions\) Regulations 2009](#); or
- We believe the 'harm test' is satisfied in respect of the individual (i.e. they may harm a child or vulnerable adult or put them at risk of harm); and
- The individual has been removed from working in regulated activity (paid or unpaid) or would have been removed if they had not left

Agency and third-party staff

We will obtain written notification from any agency or third-party organisation that it has carried out the necessary safer recruitment checks that we would otherwise perform. We will also check that the person presenting themselves for work is the same person on whom the checks have been made.

Contractors

We will ensure that any contractor, or any employee of the contractor, who is to work at the school has had the appropriate level of DBS check (this includes contractors who are provided through a PFI or similar contract). This will be:

- An enhanced DBS check with barred list information for contractors engaging in regulated activity
- An enhanced DBS check, not including barred list information, for all other contractors who are not in regulated activity but whose work provides them with an opportunity for regular contact with children
- We will obtain the DBS check for self-employed contractors.
- We will not keep copies of such checks for longer than 6 months.

- Contractors who have not had any checks will not be allowed to work unsupervised or engage in regulated activity under any circumstances.
- We will check the identity of all contractors and their staff on arrival at the school.

For self-employed contractors such as music teachers or sports coaches, we will ensure that appropriate checks are carried out to ensure that individuals are not disqualified under the 2018 Childcare Disqualification Regulations and Childcare Act 2006. Where we decide that an individual falls outside of the scope of these regulations and we do not carry out such checks, we will retain a record of our assessment. This will include our evaluation of any risks and control measures put in place, and any advice sought.

Trainee/student teachers

Where applicants for initial teacher training are salaried by us, we will ensure that all necessary checks are carried out.

Where trainee teachers are fee-funded, we will obtain written confirmation from the training provider that necessary checks have been carried out and that the trainee has been judged by the provider to be suitable to work with children.

In both cases, this includes checks to ensure that individuals are not disqualified under the 2018 Childcare Disqualification Regulations and Childcare Act 2006.

Volunteers

We will:

- Never leave an unchecked volunteer unsupervised or allow them to work in regulated activity
- Obtain an enhanced DBS check with barred list information for all volunteers who are new to working in regulated activity
- Carry out a risk assessment when deciding whether to seek an enhanced DBS check without barred list information for any volunteers not engaging in regulated activity. We will retain a
- Ensure that appropriate checks are carried out to ensure that individuals are not disqualified under the 2018 Childcare Disqualification Regulations and Childcare Act 2006. Where we decide that an individual falls outside of the scope of these regulations and we do not carry out such checks, we will retain a record of our assessment. This will include our evaluation of any risks and control measures put in place, and any advice sought

Governors

All governors will have an enhanced DBS check without barred list information.

They will have an enhanced DBS check with barred list information if working in regulated activity.

All governors will also have a section 128 check (as a section 128 direction disqualifies an individual from being a maintained school governor).

Staff working in alternative provision settings

Where we place a pupil with an alternative provision provider, we obtain written confirmation from the provider that they have carried out the appropriate safeguarding checks on individuals working there that we would otherwise perform.

Adults who supervise pupils on work experience

When organising work experience, we will ensure that policies and procedures are in place to protect children from harm.

We will also consider whether it is necessary for barred list checks to be carried out on the individuals who supervise a pupil under 16 on work experience. This will depend on the specific circumstances

of the work experience, including the nature of the supervision, the frequency of the activity being supervised, and whether the work is regulated activity.

19. Procedure for dealing with Allegations about Staff - Concerns about a staff member, supply teacher or volunteer. KCSiE Part 4

If you have concerns about a member of staff (including a supply teacher or volunteer), or an allegation is made about a member of staff (including a supply teacher or volunteer) posing a risk of harm to children, speak to the headteacher. If the concerns/allegations are about the headteacher, speak to the chair of governors.

This is not the responsibility of the Designated Safeguarding Lead unless the DSL is also the Headteacher. The Headteacher will deal with allegations made against school staff including supply staff and volunteers.

The responsibility to manage allegations about supply teachers is made clear in KCSiE 2021, so the Headteacher will ensure allegations are dealt with appropriately even when they are not the employer. School cannot simply cease to use this teacher. Processes will be followed to manage this akin to disciplinary procedures and the school will advise supply agencies of its process for managing allegations.

Procedure for dealing with complaints and allegations about staff – KCSiE Part 4

Ashwood Park Primary School will follow the “Allegations Procedures” (DSPP Procedures).

If any concerns or allegations are made against members of staff, in the first instance these will be discussed with the Designated Officer for Managing Allegations (LADO) or duty Independent Reviewing Officer. It is useful at this stage to also provide full names of the member of staff and child involved in the allegation, their dates of birth, addresses and details of any previous concerns, as this will avoid delay. All allegations against people who work with children will be passed on to the Local Authority Designated Officer (Managing Allegations) in accordance with the Working Together to Safeguard Children (2018) and the DSPPB Safeguarding Children Procedures. A Managing Allegations Referral form will need to be completed.

LADO Yvonne Nelson Brown 01384 813110 allegations@dudley.gcsx.gov.uk

School will work with other agencies to investigate when a member of staff has ‘behaved or may have behaved in a way that indicates they may not be suitable to work with children.

Procedure for dealing with complaints and allegations about the headteacher

Concerns about the Headteacher should go to the Chair of Governors. The Chair of Governors will contact the LADO.

Procedure for dealing with complaints and allegations a school governor

If an allegation is made against any governor, including the Chair of Governors, the Headteacher will contact the LA Designated Officer.

The headteacher/chair of governors will then follow the procedures:

- if any allegation is made a quick resolution should be a clear priority; any unnecessary delays should be eradicated
- in response to an allegation all other options should be considered before suspending a member of staff;
- allegations that are found to be malicious should be removed from the personnel records
- pupils that are found to have made malicious allegations are likely to have breached school behaviour policies; the school will therefore consider the appropriate sanction
- we as the employer have a duty of care to all staff; support for the individual is the key to fulfilling this duty
- when an allegation is made it is extremely important that every effort is made to maintain confidentiality
- after any allegations of abuse have been made, the outcome will be categorised as either substantiated, malicious, false, unsubstantiated or unfounded

In addition to this, Ashwood Park Primary School has routine systems for continually monitoring the performance of staff ensuring compliance with both child protection procedures and the code of good practice. All staff within Ashwood Park Primary School will adhere to the Guidance for Safer Working Practice for those working with Children and Young People in Educational Settings (May 2019). This covers a wide range of issues around staff conduct.

If staff have concerns about a fellow colleague, they should follow the Whistle Blowing Procedures. Where a staff member feels unable to raise an issue with their employer or feels that their genuine concerns are not being addressed, other channels are open to them such as the NSPCC Whistle Blowing helpline: **0800 028 0285**.

20. Whistleblowing

All staff and volunteers should raise concerns about poor or unsafe practice and potential failures in the school safeguarding regime and know that such concerns will be taken seriously by the senior leadership team.

Appropriate whistleblowing procedures, are reflected in staff training and such concerns should be raised with the school's senior leadership team.

Where a staff member feels unable to raise an issue, or feels that their genuine concerns are not being addressed, other whistleblowing channels may be open to them:

Ashwood Park's Whistle-blowing Policy (displayed in the staff room)

General guidance can be found at: <https://www.gov.uk/whistleblowing>

The NSPCC whistleblowing helpline is available as an alternative

<https://www.gov.uk/government/news/home-office-launches-child-abuse-whistleblowing-helpline>

21. Low Level Concerns

KCSiE uses the term 'low-level' concern but this does not mean that it is insignificant. A low-level concern is any concern – no matter how small, even if it is no more than causing a sense of unease or a 'nagging doubt'. It is used in relation to concerns about staff - that an adult working in or on behalf of the school may have acted in a way that:

- is inconsistent with the staff code of conduct, including inappropriate conduct outside of work

- does not meet the harm threshold or is otherwise not serious enough to consider a referral to the LADO.(Local Authority Designated Officer)

Examples of such behaviour could include, but are not limited to:

- being over friendly with children
- having favourites
- engaging with a child on a one-to-one basis in a secluded area or behind a closed door, or humiliating pupils.

Such behaviour can exist on a wide spectrum, from the inadvertent or thoughtless, or behaviour that may look to be inappropriate, but might not be in specific circumstances, through to that which is ultimately intended to enable abuse.

Low-level concerns may arise in several ways and from a number of sources. For example: suspicion; complaint; or disclosure made by a child, parent or other adult within or outside of the organisation; or as a result of vetting checks undertaken. It is crucial that all low-level concerns are shared responsibly with the right person, and recorded and dealt with appropriately. Ensuring they are dealt with effectively should also protect those working in or on behalf of schools from becoming the subject of potential false low-level concerns or misunderstandings.

Recording low-level concerns

All low-level concerns should be recorded in writing. The record should include details of the concern, the context in which the concern arose, and action taken. The name of the individual sharing their concerns should also be noted, if the individual wishes to remain anonymous then that should be respected as far as reasonably possible.

These type of concerns you would report directly to DSL/Deputy DSL.

22. Safeguarding in the Curriculum

Child Protection and wider child safety issues will be addressed through the curriculum as appropriate, especially in Personal, Social and Health Education (PSHE), Relationships Education (Sept 2020), Information and Communication Technology (ICT), Citizenship, Rights Respecting Schools, British Values and Growth Mindset. Assemblies, visitors to school and themed weeks such as Health, Online safety and Anti-Bullying also support the safety and well-being of the children in our care.

23. Special Circumstances

Our Safeguarding and Child Protection policy cannot be separated from the general ethos of the school, which should ensure that pupils are:

- treated with respect and dignity
- taught to treat each other with respect
- feel safe
- are listened to

The following policies and guidance link to our safeguarding procedures.

- Behaviour

- Staff [behaviour/code of conduct]
- Complaints
- Health and safety
- Attendance
- Online safety
- Sex and relationship education
- Privacy notices
- GDPR
- Whistleblowing
- Anti-bullying
- IT / Acceptable Use policy

Visitors

All visitors will be required to verify their identity to the satisfaction of staff.

If the visitor is unknown to the setting, we will check their credentials and reason for visiting before allowing them to enter the setting. Visitors should be ready to produce identification.

Visitors are expected to sign the visitors' book and wear a visitor's badge.

Visitors to the school who are visiting for a professional purpose, such as educational psychologists and school improvement officers, will be asked to show photo ID and:

- Will be asked to show their DBS certificate, which will be checked alongside their photo ID; or
- The organisation sending the professional, such as the LA or educational psychology service, will provide prior written confirmation that an enhanced DBS check with barred list information has been carried out

All other visitors, including visiting speakers, will always be accompanied by a member of staff. We will not invite into the school any speaker who is known to disseminate extremist views and will carry out appropriate checks to ensure that any individual or organisation using school facilities is not seeking to disseminate extremist views or radicalise pupils or staff.

Non-collection of children

If a child is not collected at the end of the session/day, we will:

Contact the parents(s)/other contact

Keep the child at the school office and transfer to Out of School Care Club (OSCA) at 3.30pm

If contact cannot be made children's services will be informed and advice followed.

A log of the incident will be recorded on CPOMs.

APPENDIX 1

Dealing with a Disclosure of Abuse/Reporting a Concern

When a child tells me about abuse s/he has suffered, what must I remember?

- Stay calm.
- Do not communicate shock, anger or embarrassment.
- Reassure the child. Tell her/him you are pleased that s/he is speaking to you.
- Never enter into a pact of secrecy with the child. Assure her/him that you will try to help but let the child know that you will have to tell other people in order to do this. State who this will be and why.
- Tell her/him that you believe them. Children very rarely lie about abuse; but s/he may have tried to tell others and not been heard or believed.
- Tell the child that it is not her/his fault.
- Encourage the child to talk but do not ask "leading questions" or press for information.
- Listen and remember.
- Check that you have understood correctly what the child is trying to tell you.
- Praise the child for telling you. Communicate that s/he has a right to be safe and protected.
- Do not tell the child that what s/he experienced is dirty, naughty or bad.
- It is inappropriate to make any comments about the alleged offender.
- Be aware that the child may retract what s/he has told you. It is essential to record all you have heard.
- At the end of the conversation, tell the child again who you are going to tell and why that person or those people need to know.
- As soon as you can afterwards, make a detailed record of the conversation on CPOMs or a reporting form using the child's own language. Include any questions you may have asked. Do not add any opinions or interpretations. *(See Appendix 3 Reporting form). Teachers and/or DSL will record an incident summary on CPOMS (Child Protection Online Monitoring System) and the DSL will scan the reporting form.*

NB It is not education staff's role to seek disclosures. Their role is to observe that something may be wrong, ask about it, listen, be available and try to make time to talk.

Immediately afterwards (Reporting Concerns)

You must not deal with this yourself. Seek support from the DSL/Deputy DSL. Clear indications or disclosure of abuse must be reported to children's social care without delay, by the Designated Safeguarding Lead or the Headteacher.

Complete a CPOMs incident or the reporting form (*Appendix 3*) available in the E Safeguarding file / staff room noticeboard and hand it directly to the appropriate person. **Do not** leave it in their tray or on their desk for them to 'find'. It may be urgent and require an immediate response.

Safeguarding Mobile: 07379 906201

If the DSL or deputy is not available, contact Children's Services on 0300 555 0050. Out of hours 0300 555 8574

At no time should an individual consider taking photographic evidence of any injuries or marks. This could lead to managing allegations procedures.

Children making a disclosure may do so with difficulty, having chosen carefully to whom they will speak. Listening to and supporting a child/young person who has been abused can be traumatic for the adults involved. Support for you will be available from your Designated Safeguarding Lead or Headteacher.

APPENDIX 2

What to do if you are concerned:

(Concerns outside the immediate environment (e.g. a parent or carer))

- Report your concerns to the Designated Safeguarding Lead, who should contact Social Care Team or the Police as soon as possible.
- If the *Designated Safeguarding Lead* is not available, then the Head Teacher or the person currently responsible for the school should be informed. (This is to ensure there is no delay in seeking advice or making a referral).
- Social Care Team and the *Designated Safeguarding Lead* will decide how to involve the parents/carers. Parents should not be informed if to do so would 'increase risk to the child'.
- Maintain confidentiality on a **need to know** basis only.

Information for social care or the police about suspected abuse

To ensure that this information is as helpful as possible, a detailed record should always be made at the time of the disclosure/concern, which should include the following:

- The reasons for your concern
- Full name and date of birth of the child
- Names and dates of birth of the child's family/household members
- Other agencies/professionals involved with the family
- The child's first language and any special needs
- The child's developmental needs, family and environmental factors and parenting capacity
- Any work you may have already undertaken with the child and family

All incidents will be reported through the Dudley Front Door, by the Designated Safeguarding Lead.

If Ashwood Park believe that a reported concern has not been evaluated and allocated appropriately, the Resolution and Escalation process will be followed.

Responding to allegations or suspicions (about someone working with children or young people)

It is not the responsibility of anyone working within Ashwood Park Primary School in a paid or unpaid capacity to decide whether or not child abuse has taken place. However, there is a responsibility to act on any concerns by reporting these to the appropriate officer or the appropriate authorities.

Ashwood Park Primary School will ensure all staff/volunteers that it will fully support and protect anyone, who in good faith reports his or her concern that a colleague is, or may be, abusing a child.

All allegations or suspicions of abuse will be taken seriously and treated in accordance with these procedures. They will be applied when there is an allegation or concern that any person, who works with children, in connection with their employment, voluntary or personal activity, has:

- Behaved in a way that has harmed a child, or may have harmed a child
- Possibly committed a criminal offence against, or related to a child
- Behaved towards a child or children in a way that indicates they are likely to pose a risk of harm to children

These behaviours will be considered within the context of the four categories of abuse (i.e. physical, sexual and emotional abuse and neglect). This includes concerns relating to inappropriate relationships between members of staff and children or young people, for example:

- Having a sexual relationship with a child under 18 if in a position of trust in respect of that child, even if consensual (s16-19 *Sexual Offences Act 2003*)
- 'Grooming', i.e. meeting a child under 16 with intent to commit a relevant offence (s15 *Sexual Offences Act 2003*)
- Other 'grooming' behaviour giving rise to concerns of a broader child protection nature (e.g. inappropriate text/email messages or images, gifts, socializing. etc.)
- Possession of sexual images of children/pseudo-photographs of children

The definition of working with children includes paid and unpaid staff, volunteers and carers (including foster and adoptive carers). It may include everyone, who works School Ashwood Park Primary including administrative and other support staff.

Action if there are concerns

Concerns about poor practice:

- If, following consideration, the allegation is clearly about poor practice, the Headteacher will deal with it as a misconduct issue.
- If the allegation is about poor practice by the Designated Safeguarding Lead, or if the matter has been handled inadequately and concerns remain, it should be reported to the Headteacher/Chair of Governors who will decide on whether disciplinary action should be taken and the next steps to take.

Concerns about suspected abuse

- Any suspicion that a child has been abused by either a member of staff or a volunteer must be reported to the Headteacher, who will take such steps as considered necessary to ensure the safety of the child in question and any other child who may be at risk.
- The Headteacher will refer the allegation to the Social Care Team who may involve the Police. All allegations against people who work with children must be passed onto the DO (Designated Officer for Managing Allegations).
- The parents or carers of the child will be contacted as soon as possible following advice from the Social Care Team.
- If the Designated Safeguarding Lead is the subject of the suspicion/allegation, the concern must be shared with the Headteacher. If the Headteacher is the subject of the concern/ allegation, the concern must be shared with the Chair of Governors. The Chair of Governors will liaise with the Designated Officer for Managing Allegations and HR.

Internal Enquiries and Suspension

- The Head Teacher will liaise with the Chair of Governors and make an immediate decision about whether any individual accused of abuse should be temporarily suspended pending further police and social care inquiries. Advice can also be sought from the Human Resources Section and the DO (Designated Officer for Managing Allegations).
- Irrespective of the findings of the Social Care Team or Police inquiries the Headteacher/Chair of Governors will assess all individual cases to decide whether an individual can be reinstated and how this can be sensitively handled. This may be a difficult decision; particularly where there is insufficient evidence to uphold any action by the police. In such cases, the Chair of Governors and Headteacher must reach a decision based upon the available information which could suggest that on a balance of probability; it is more likely than not that the allegation is true. The welfare of the child should remain of paramount importance throughout.

APPENDIX 3

Form for recording and reporting concerns about a child (double sided with body map)

<u>Form for recording and reporting concerns about a child</u>		
Full name of child:	Class:	Year:
Date of birth (if known):		
Your name:	Position:	
Date and time of incident/disclosure/concern:		
Please provide details of the incident/disclosure/concern, including times, dates, description of injuries (body map included yes/no), and, if applicable, exact words spoken by the child (please continue on additional numbered pages if needed):		
Signed:	Time and date of reporting:	
Name of staff member reported to:	Further action taken by staff member:	
Signed:	Date:	
Any other information helpful for referral (to be completed and discussed with pastoral team/ designated safeguarding lead). Include academic progress, attendance, behaviour, presentation, peer relationships and parental knowledge:		

Body Map

