

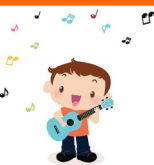
15th March 2024  
Newsletter No. 22  
Tel: 01384 818545 email: [info@ashwood.dudley.sch.uk](mailto:info@ashwood.dudley.sch.uk)



**Article 28**  
Every child has the  
right to an education

## Ukuleles

Well done to our talented Ukulele players. Those who represented Ashwood Park at The Symphony Hall last Sunday were amazing and did us proud. And we are sure all the parents who attended our Ukulele Concert in School on Tuesday thoroughly enjoyed the fantastic performance.



## New Lunches

As of Monday 8th April our School Kitchen will be run by [Shire Services](#). There will be an exciting new [menu\\*](#), and although we have had to increase the price to £2.50 per meal we are pleased that this will be one of the cheapest school lunches in Dudley. You will still be able to order your child's meals in exactly the same way that you currently do.



**If you have any outstanding lunch debt on the School Money app please pay before 22 March to avoid your debt being passed on to Dudley MBC Debt Collection team.**

\* to be confirmed

## Menu

WC 18.03.24 (Week 2)



### Monday

Salmon Bites  
Vegan Sausage Roll  
Herby diced potatoes, Spaghetti hoops & mixed veg  
Iced sprinkle sponge

### Tuesday

Spaghetti Bolognese  
Macaroni Cheese  
Battered fish  
Saute potatoes, sweetcorn & peas  
Fruit muffin & custard

### Wednesday

Traditional roast chicken  
Halal chicken  
Quorn chicken fillet  
Fish goujons  
Roast & boiled potatoes, broccoli & mixed veg  
Shortcake biscuit & custard

### Thursday

BBQ Chicken wrap  
Halal BBQ chicken wrap  
Cheese & onion lattice  
Fish bites  
Potato wedges, baked beans, sweetcorn & coleslaw.  
Chocolate crunch & chocolate sauce

### Friday

Cheese and tomato pizza  
Fish finger  
Chipped potatoes, baked beans & peas  
Mousse & fruit

### Available Every Day

Grab bags which contain a sandwich either cheese, tuna or ham filling.  
Salad bag. One from a cake, biscuit or yoghurt. Fresh fruit. Water

**All dinners must be booked through School Money the day before they are needed. Please contact the school office if you are having any issues.**

Today, Friday, we are all wearing something **RED** to support Comic Relief's Red Nose Day.

This amazing charity supports incredible projects and organisations and your donations make a very real difference to people in the UK and around the world. Thank you for your contributions, we will let you know how much we raised next week. For more information click this link:

<https://www.comicrelief.com/what-your-money-does/>



## Neurodiversity Celebration Week

Next week, w/c 18th March, we will be celebrating neurodiversity, the differences between how people think, process information, behave and communicate. Types of neurodivergence include ADHD, autism, dyslexia, dyspraxia, and Tourette's syndrome. Everyone's brain works differently and we will be celebrating the challenges and strengths that we all have.

More information can be found here:  
<https://www.neurodiversityweek.com/>



## Calling Ashwood Scientists!

This week, we have celebrated British Science Week by taking part in Farming Live lessons. We have completed work around this year's theme, time. Some classes have also had visits from real scientists to inspire the children to take up job roles in science in the future. We have had visits from a railway worker, a motorway worker and someone who works with a space antenna!

## Poster Competition

We are taking part in a poster competition run by British Science. Children are to create a poster based on this year's theme, time. The poster must be A4 or A3 and could be based on how technology has changed over time, lifecycles of animals or anything time and science related. We will be sending posters to British Science and running an internal school competition.

**Deadline: March 22nd March**

## Praise Awards

Children who gained badges and certificates in Praise assembly deserve our special congratulations:

**W/C 11.03.24**

### Key Stage One

RR Foxes	Mary H
RT Hedgehogs	Summer J
1/2B Squirrels	Layla H
1/2D Moles	Lucas P
2W Badgers	Carter C

### Key Stage Two

3/4H Elder	Oliver F
3/4R Oak	Marnie H
4D Chestnut	Charlie S
5E Beech	Theo S
5/6SB Holly	Cory C



## TT Rockstars

**This weeks Rockstars\* are:**

★ 1st	Alfie W
★ 2nd	Marnie S
★ 3rd	Emilia E



**Well done to everyone!**

\*based on most minutes played



## Lunches from Home

If you are sending your child with a packed lunch, can we ask that you cut grapes, cherry tomatoes and similar in half please.

Also, as a **nut free** school please do not send in Nutella sandwiches or any other nut products.

## Dates for the Diary

### Tuesday 19th March

Deadline for KS2 Art Club Letters

### Wednesday 20th March

Deadline for Ukulele Lunchtime Club Letters  
Deadline for KS2 Easter Egg Design Competition  
Easter Bunny at Toddlers

### Thursday 21st March

Easter Raffle Draw

### Friday 22nd March

Deadline for Science Poster Competition  
Break up at 3.15pm for Easter

### Monday 8th April

School re-opens at 8.45am

### Thursday 2nd May

Local Elections—School Closed

### Friday 3rd May

INSET—School Closed

### Monday 6th May

Bank Holiday—School Closed

### Friday 24th May

Break up at 3.15pm for Whitsun

### Monday 3rd June

School re-opens at 8.45am

### Friday 19th July

Break up at 3.15pm for Summer

### 2023-2024 INSET Days\*

Monday 4th September 2023

Friday 22nd December 2023

Monday 8th January 2024

Thursday 2nd May 2024 (VOTING)

Friday 3rd May 2024

Monday 22nd July 2024

\*Please note these are provisional.



## Easter Raffle

Our HSA are organising their popular Easter Raffle. They will be selling tickets after School.

Please buy a ticket and support this vital fundraiser.

See the flyer on page 4 below for more details.



## Attendance



Last week's top attenders were:

**Key Stage 1: RR Foxes 99.41%**

**Key Stage 2: 5/6SB Holly 95.71%**

Being around teachers and friends in a school environment is the best way for pupils to learn and reach their potential. Time in school also keeps children safe and provides access to extra-curricular opportunities and pastoral care.

More information can be found here:

<https://educationhub.blog.gov.uk/2023/05/18/school-attendance-important-risks-missing-day/>

## After School Sports Clubs

After Easter we will be offering the following:

- **Tuesday** Years 3 and 4 **Tennis**
- **Wednesday** Years 5 and 6 **Gymnastics**
- **Thursday** Years 1 and 2 **Target Games**



## PE and Swimming

The children have the following PE days:

- \* Years 5 and 6 - Friday
- \* Years 3 and 4 - Monday (with 4D bringing their swimming kit)
- \* Years 3 and 4 can come to school in their kit on **Tues only**
- \* Years 5 and 6 can come to school in their kit on **Wed only**

## Online Safety

We have had an increase in the number of parents making enquiries about online safety. We are looking at options to provide some workshops in school. You may find the following are useful websites.

Excellent advice for keeping children safe online can be found on these websites:

<https://www.childnet.com/help-and-advice/parents-and-carers>

<https://saferinternet.org.uk/guide-and-resource/parents-and-carers>

<https://www.nspcc.org.uk/keeping-children-safe/online-safety/>

## Dudley Holiday Activities



You're eligible to register for the holiday activities programme (HAF) if both of the following applies:

- You live in Dudley or your child goes to school in Dudley Borough,
- your child is aged between 5 and 16 years and your child is eligible for benefits related free school meals (FSM).

<https://www.dudleyholidayactivities.org.uk/>

## Cost of Living

There are many ways you can find support to help yourself and your family as household costs rise, including the household support fund. Find out more on the Dudley MBC website:

<https://www.dudley.gov.uk/council-community/cost-of-living/>

## Privacy Notice

Please note that our Privacy Notice can be found on the Ashwood Park Primary School website:

<https://www.ashwood.dudley.sch.uk/policies/>

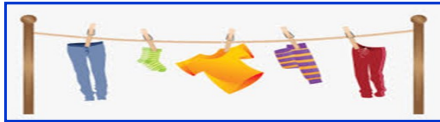
## EFYS News

We have enjoyed learning about Spring this week and the children have been planting in Reception! When our sunflowers get bigger, we will send them home to grow in your outdoor spaces!



Next week is the last week of the Spring Term and we are looking forward to doing lots of Easter activities.

PE and Forest School kits will come home next week for washing over Easter.



## KS1 News

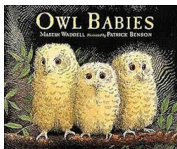
This week in Key Stage One we have been finding out about how to measure using grams and kilograms. We have also compared the mass of different objects using balance and weighing scales.



In History we have been creating fact files about Mary Seacole and in PE we have been completed our pirate dance and

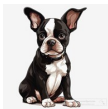
have now moved on to a dance all about TOYS!

Next week we will be continuing with our book Owl Babies and creating some special Easter crafts and cards.



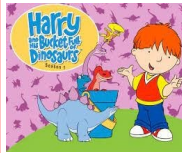
## Dogs

School policy is that **no dogs** are allowed on school premises (either on a lead or carried). We would appreciate your co-operation by **not** bringing your pet to school.



## RBD News

It has been an incredibly busy week in the RBD.



Some of the Key Stage 1 children have been basing their learning on the story of 'Harry and the Bucketful of Dinosaurs'.

In the base in Key Stage 2 the children have been learning how to write their own instructions for how to make a cup of tea!



Please can we ask parents to make sure they continue to read with their child(ren) at home. It is so important for the children to consolidate their learning and we are very proud of them when they can change their books. Thank you for your support with this.



Well done!

Well done to Kayla for trying really hard to extend her sentences in English and working independently. We are very proud of you!

## Signed Video

Next week is British Sign Language week. We have created a video about this on our YouTube channel.

<https://www.youtube.com/watch?v=hybl-o6XRww>



British Sign Language

## KS2 News



We have had a busy week this week celebrating [British Science Week](#). Mrs Bunn led an exciting assembly for all of the children on Thursday, all of our classes have participated in live lessons, and we have also had a number of STEM visitors into school to talk about how science plays a role in their jobs. We really hope that all of these activities have inspired our children to enjoy their lessons and consider future roles in science.

Our children have also enjoyed wearing red mufti this week in support of Red Nose Day. Thank you to all of our families for their contributions.

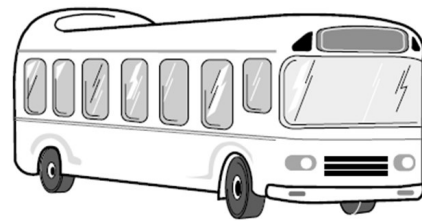


## PE KIT

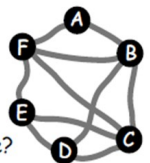
When the children come to school in their PE kit they must wear their yellow PE top, green shorts / black joggers and their green Ashwood Park jumper or cardigan. Hoodies and gilets are **not** permitted. Please support us to ensure that all of our children are in the correct uniform and feel part of our Ashwood Park team.



## Bus routes



Six towns are connected by bus routes. The bus goes from A back to A. It visits each of the other towns once. How many different bus routes are there?



This table shows the bus fare for each direct route. B to A costs the same as A to B, and so on.

A to B	B to C	C to D	D to E	E to F	F to A	B to D	B to F	C to E	C to F
£4	£3	£4	£4	£3	£4	£5	£3	£2	£2

Which round trip from A to A is the cheapest?





Chair: Mrs Kate Blunt

Vice Chair: Mrs Jean Downie

Treasurers: Miss Amy Farley

Secretary: Mrs Sarah Hill

1<sup>st</sup> March 2023

## DONATIONS FOR EASTER RAFFLE



Spring is in the air and that means it is time for our popular Easter Raffle!

To help us provide more prizes, we kindly ask if you could make an Easter themed donation e.g. Easter eggs or Easter chocolates.

If you are able to make a donation, please bring it into school by Friday 8<sup>th</sup> March 2024.

Members of the HSA will be selling raffle tickets after school starting Tuesday 12<sup>th</sup> March until Wednesday 20<sup>th</sup> March.

The winning tickets will be drawn during on Thursday 21<sup>st</sup> March.

As always, all monies raised will go towards funding for equipment and projects to enhance your child's / children's education.

Many thanks for your continued help and support.

*Kate Blunt*

HSA Chair



Bells Lane  
Wordsley, Stourbridge  
West Midlands DY8 5DJ



Phone: 01384 818545  
Fax: 01384 818546  
Email: [info@ashwood.dudley.sch.uk](mailto:info@ashwood.dudley.sch.uk)

# EASTER HOLIDAY ACTIVITIES

**Dudley Holiday Activities provides free activities in the school holidays for children aged 5-16 who receive benefits related Free School Meals**

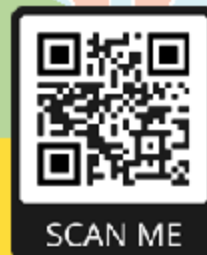


## HOW TO SIGN UP

1. **Register on the NEW Dudley HAF Website! You must be registered to book activities.**
2. **Once FSM status has been verified by Dudley Council, you will receive an email with login details.**
3. **When bookings open for Easter – usually a couple of weeks before the holiday, you can log in and book up to 4 sessions for each of your children.**



[www.dudleyholidayactivities.org.uk/register](http://www.dudleyholidayactivities.org.uk/register)



**DUDLEY**  
HOLIDAY ACTIVITIES



**Dudley**  
Metropolitan Borough Council



**ACE COACHING  
PRESENTS**

# FOOTBALL & INVASION GAMES EASTER EGGSTRAVAGANZA

## WHEN

### COURSE 1

Monday 25<sup>th</sup> - Thurs 28<sup>th</sup> March

### COURSE 2

Tuesday 2<sup>nd</sup> - Friday 5<sup>th</sup> April

Please enquire if your child is 4 years old as session times may differ.

(Focusing primarily on the sports Football, Dodgeball, Netball and Handball)

**OPEN TO BOYS AND GIRLS  
FROM RECEPTION TO YEAR 6**

## WHERE

CRESTWOOD SCHOOL &  
6<sup>th</sup> Form, Bromley Lane,  
Kingswinford, DY6 8QG

## COST

**ONLY £85 IF YOU BOOK ALL WEEK  
OR £25 PER DAY**

## TIME

Each day 9.00am - 3.00pm

### ACE OFFER 1

Bookings & payments received by Monday 18th March will receive a **£10 DISCOUNT!**  
Offer only applies when booking a full week on to an Ace Coaching Football and Invasion Games Course.

### ACE OFFER 2

Family & friends - Enrol two children for the week, bookings received by Monday 18th March **FOR ONLY £120**  
Offer only applies when booking a full week on an Ace Coaching Football & Invasion Games course.  
Please note that the £10 discount in Ace offer 1 is not available to use in conjunction with Ace offer 2.

### ACE OFFER 3

**COURSE MULTI SAVER**  
Book both courses for only **£130 PER CHILD**  
If booked by Monday 18th March