

20th June 2025

Newsletter No. 35

Tel: 01384 818545 info@ashwood.dudley.sch.uk

Article 28 Every child has the right to an education

Messages from Mr Butler

Sports Day Thanks to everyone who came to the rearranged Sports' Days! The weather was very hot but the children were amazing! It was so good to see the children support each other.

School Reports This years' reports will go home on Friday July 11th.

Punctuality Please note that children should be in class for 8.45 am, this is the time that School starts and the registers are taken. We appreciate that occasionally problems arise so please phone the School Office if you are going to be late.

Lost Property At the end of each day we are finding multiple items of lost uniform around School, many of them have no name in so it is very difficult for us to reunite them with their owner. Please write your child's name in clothing, thank you.

Social Media Please check you child's phone for appropriate usage on "What's App" and "Discord". We have been alerted to inappropriate use on these apps.

Facebook Do remember to take a look at the School's [Facebook](#) page.

Keith Butler

Praise Assembly

Children who gained badges and certificates deserve our special congratulations:

11/06/2025

Key Stage One

| | |
|----------------|------------|
| RR Foxes | Arabella |
| RB Hedgehogs | Millie |
| 1/2B Squirrels | Tahmym |
| 1/2D Moles | Sheldon |
| 2W Badgers | Darla Rose |

Key Stage Two

| | |
|-------------|----------|
| 3/4B Elder | Esmai |
| 3/4R Oak | Mollie |
| 4D Chestnut | Bella |
| 5P Beech | Evie |
| 5/6B Holly | Courtney |
| 6RB Rowan | Thomas |



Dates for the Diary

Wednesday 2nd July

INSET Day

Friday 18th July

9.15 am Yr 6 Leaver's Assembly

Break up for Summer Holidays

3.15pm

Monday 21st July

INSET Day

Monday 1st September

INSET Day

Monday 3rd November

INSET Day

Monday 5th January

INSET Day

Thursday 7th May

Voting Day

Friday 8th May

INSET Day

W/C Monday 11th May

Year 6 SATs

Wednesday 1st July

INSET Day

Please note INSET days are provisional and are subject to change

Menu*

WC **23.06.25** (Week 2)



Monday

Katsu Chicken Steak

Chicken Nuggets (H)

Quorn Sub Ball (V)

Fish Option

Rice or Diced Potatoes

Blueberry Pudding

Tuesday

Chicken Taco

French Bread Pizza (V)

Fish Option

Potato Wedges

Cookie Selection

Wednesday

Roast Beef

Roast Chicken (H)

Veggie Sausage (V)

Fish Option

Mashed & Roast Potatoes

Vanilla Iced Sponge

Thursday

Meatballs in Tomato Sauce

Katsu Quorn Dippers (V)

Diced Potatoes or Pasta

Chocolate & Pear Cake

Friday

Pizza Party (V)

Battered Fish

McCain Chips

Fruity Friday

Available Every Day

Jacket potato, sandwich, cheese,

All dinners must be booked through School Money the day before they are needed. Please contact the school office if you are having any issues.

* Subject to change

Lunches from Home

If you are sending your child with a packed lunch, can we ask that you cut grapes, cherry tomatoes and similar in half please. Also, as a **nut free** school please do not send in Nutella sandwiches or any other nut products. Please do NOT send drinks in cans or glass bottles.

EYFS News

Our Sports Day went really well, we were very proud of the children for participating so well and coping in the very hot temperatures!



Please return PE kits next week.



Reception children are learning about jobs and professions next week so please let your child's teacher know what job you do.

Nursery children will continue their minibeast topic and will learn about bees next week.



Tree Tots Toddler Group

Wednesdays 9.00 - 11.00am

Mrs Manville and Miss Reynolds have lots of lovely activities planned. Toys, activities, songs, stories and crafts available. Refreshments included – adults please bring a lidded cup!



KS1 News

This week we have been working hard on our end of year assessments. The children have demonstrated some great effort and concentration to try and show how much they have progressed.

We have also been continuing our topic on Sculpture and have created some more 3D artwork using clay.



Next week we are looking forward to visiting the Wyre Forest as part of our Science topic on plants. The children will get chance to explore the forest and make a craft using natural materials.



TT Rockstars

This weeks Rockstars are;

1st Harrison 3/4R
2nd Aaryan 3/4R
3rd Alfie G 3/4R

Well done to everyone

RBDC News

Everyone in the RBDC have been working very hard this week!



In Acorns class this week, we have used adjectives to describe our characters from Jack and the Beanstalk.

In RSE, we have been thinking about routines and how we can stay healthy.

In Conkers this week, we have started looking at food chains and building our language knowledge. We have looked at producers, consumers, predators and prey. We have found examples of each to start building food chains next lesson.

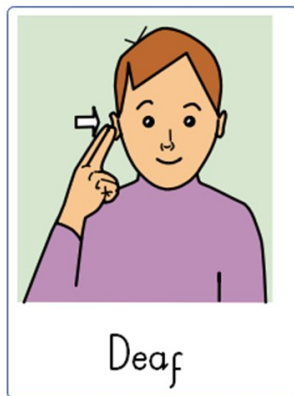


Star of the week in the base is Kobie for demonstrating the 4 R's and making showing good listening skills in Science.

Signed Video:

Our BSL Club's focus this week is 'Deaf Role Model'. Please see the video below.

<https://www.youtube.com/watch?v=fLoreWnW3Ek>



Deaf

Happier Minds

Happier Minds is a mental wellbeing website designed for Young People aged 11 and over in Dudley. It also has pages for Parents/Carers and Education Staff. On the website you can access high quality, safe and reviewed mental wellbeing sources to help yourself or others you care about.



KS2 News

Because of the glorious sunshine, our long awaited sports day arrived - thank you to all of the families and friends who came to support. All of the children enjoyed a much needed iced tip top after their races, kindly provided by the PTA.



In Years 5 the children have worked hard doing their tests, quite a challenge in the current heatwave. The Year 6 children in School have enjoyed tackling some mathematical mystery challenges.



All the children have been working on their new Art project, Make My Voice Heard by looking at expression art and graffiti.

In Years 3 and 4 this week, the children have had fun dramatising playscripts. They have also been creative, thinking of all of the weird and wonderful things that they would put in a potion in preparation for instructional writing linked to our current book, The Worst Witch.



Leavers' Assembly Friday 18th July at 9:15am.

PE Lessons

Monday - 3/4R and 4D PE kit needed.
3/4H swimming kit needed.

Wednesday - Year 5 and 6 can come to School in their PE kit

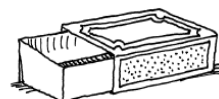
Thursday - Year 3 and 4 can come to School in their PE kit

Friday - 5P / 5/6B / 6RB PE kit needed.

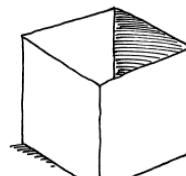
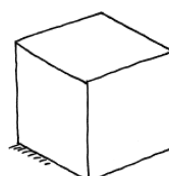
Math's Problem

A perfect match

1. A matchbox tray slides into its outer cover. In how many different ways can you do this?



2. Imagine a cube and an open box just large enough to hold it. In how many different ways can you fit the cube into the box?





Children's Speech and Language Service (Dudley)

Advice for parents and carers can be found at:

<https://www.blackcountryhealthcare.nhs.uk/our-services/childrens-speech-and-language-therapy-service-dudley>

Dudley's Special Educational Needs and Disabilities Bulletin

The Dudley Special Educational Needs and Disabilities e-bulletin's aim is to keep parent carers, education settings and stakeholders informed about Dudley's Special Educational Needs and Disabilities (SEND) Improvement Programme as well as news and events.

As a system we are working hard to improve our SEND offer across the borough. A lot is happening and we are gathering pace to better support our children, young people and families with SEND.

Our latest bulletin provides:

- updates of our improvement journey including our progress of our Delivering Better Value Programme in SEND
- SEND news from the Dudley Parent Carer Forum, Health, the council and partners
- details of useful events for parent carers and practitioners
- SEND Education Settings News which includes information about free SEND training Resources.

Sign up now [SEND Improvement Programme - September 2024 \(govdelivery.com\)](https://www.govdelivery.com) to receive this e-bulletin direct to your email inbox

Health Choices

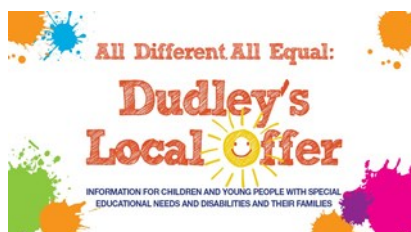
Dudley Public Health and Wellbeing is part of Dudley Council. We support and enable residents, families and communities to make positive lifestyle changes and improve your health and wellbeing. There is lots we can do as individuals to stay healthy and well in Dudley borough. This website is a one-stop place for up-to-date public health information and news, from pregnancy and early life to healthy ageing.

<https://healthydudley.co.uk/>

Healthy Lunchboxes

The Healthy Lunchbox Resource is available to support children & families to make healthy, yummy and tooth friendly food choices for their children's lunchbox.

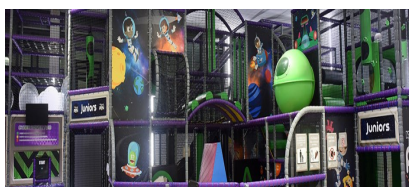
<https://healthydudley.co.uk/lunch/>



Dudley's Local Offer is a new one stop shop website for children and young people with special educational needs and disabilities (SEND) and their parents and carers.

The website contains a wealth of up to date information on areas which include education, training and work, health, leisure and fun, care and moving into adulthood. The website aims to help young people and parents to make individual, informed, positive decisions and choices

The Dudley family hub network is a one-stop shop, offering advice and support for families in Dudley with children aged 0-19 (25 if the child has special educational needs and/or disabilities). It includes an online offer and five local family hubs. The network includes key Start for Life services. These cover the period from conception to age two. Core Start for Life services such as midwifery, health visiting and early years support are included. <https://www.dudley.gov.uk/residents/early-years-and-childcare/dudley-family-hub-network/>



SEN Soft Play Sessions

Dudley leisure centres offer soft play sessions for children with SEN:

At Duncan Edwards Leisure Centre, there is a SEN soft play session **every Wednesday from 5.00pm - 6.00pm**

At Halesowen, there is a SEN soft play session **every Monday from 4.30pm - 6.00pm**.

Both sessions are suitable for children under 11 years of age with disabilities, special educational needs, ASD and their siblings.

New Sensory Room at Coseley Family Hub
Parents and carers can now book time in a NEW sensory room at the local family hub in Coseley. The FREE space is bookable for between 30min to an hour and gives the chance for children of all ages to explore a range of sensory activities with their parents/carers.

The sessions are self-led but staff will be on hand to support or answer any questions. To book call the hub on 01384 813096.

Parent Carer Forum Update:



Dudley Parent carer Forum welcome registrations for membership from parent/carers and also offer associate memberships to wider family members or practitioners working within Dudley. Joining up means you will be kept up to date on all the latest news, information and events doing on in Dudley. Parents/Carers will also receive a FREE gift when they sign up!

[Sign Up Here](#)

Integrated Early Years Service Parent Support Group



This group offers support to parents and carers of children with a range of additional needs. It provides a supportive environment to engage with your child, and also to gain practical advice for everyday routines.

[See More Details Here](#)

Dudley Parents

There is a one stop shop for parents in the Dudley Borough offering support and information. You can gain free access to guidance and support over a range of topics for parents including First 1001 Days as a Parent, DadPad, Five to Thrive, Solihull Approach, Triple P, Parents in Conflict, The Henry Approach.

www.dudleyparents.co.uk/home

DudleyParents

SEN Help

Kids are a charity who create life-changing opportunities by providing a wide range of support to families. They run playscheme days at their centre alongside community days for signed up families. Parent/carers wishing to refer or register with Kids for care planned services can do so by requesting a referral form via the enquiries email: enquiries.orchard@kids.org.uk or via telephone: 01384 897489.

Sassy Sensory surprises are launching 'Wellbeing Walks', they will take place in a different location each month.

Contact toni@sassysensorysurprises.co.uk for further details. Information can be found on their website regarding their recently launched sensory lending library.

Happier Minds

Whether you are a young person, a parent/carers or a professional working with young people we hope this site will be helpful to you and those you care about.

<https://happierminds.org.uk/>

under5s day

featuring the famous **Himley Beach**

FRIDAY 27 JUNE

10AM – 3PM



Learn to play

with **dpa**
dudley performing arts

Young people can now enrol for discounted music lessons with Dudley Performing Arts. Lessons take place in school delivered by the biggest provider of music tuition in our area.

Scan the QR code to find out more, including how to enrol. Alternatively, visit www.dudley.gov.uk and search 'lessons in schools' or phone 01384 813865.

Dudley BLACK COUNTRY MUSIC **HUB**

Supported using public funding by
Department for Education **ARTS COUNCIL ENGLAND**

FRESH VIBES

from beginners to ballers

BASKETBALL

sessions

@ CRESTWOOD SCHOOL, Bromley Lane, Kingswinford, DY6 8QG

Saturday 7th, 14th, 21st & 28th June
& Saturday 5th & 12th July

5-8 Years of age - 10am - 11am
9-12 Years of age 11am - 12pm

Cost: enrol your child on to the course now for only £45.00 with this flier, plus our super slam dunk offer, enrol two children for only £80.00 (please see overleaf for more details) Pay on day sessions, £9.00 per session

To enrol please email us....
acecoaching.courseenrolments@hotmail.com

CREATE STREET ARTS

THIS SUMMER COME AND JOIN THE BEE HIVE CLUB

FUN FILLED
ACTIVITIES FOR
NEURODIVERGENT
5- 11
YEAR OLDS

£25
PER SESSION

SIBLING DISCOUNT
AVAILABLE

9AM-12PM

THE
MARY STEVENS CENTRE
STOURBRIDGE
DY8 2JR

BEE HIVE DATES
21ST JULY
23RD JULY
4TH AUGUST
6TH AUGUST
8TH AUGUST

ACTIVITIES DESIGNED TO
BOOST SELF ESTEEM,
INCREASE CONFIDENCE
AND
BUILD SOCIAL SKILLS

GAMES,
OUTDOOR PLAY,
JUNK MODELLING,
ARTS AND CRAFTS,
AND MUCH MORE



TO BOOK OR FIND OUT MORE PLEASE SEE BEE WELL TOGETHER
SOCIAL MEDIA PAGES

EMAIL US WITH ANY ENQUIRIES BEEWELLTOGETHER@OUTLOOK.COM

Free School Meals

If you receive any of the following support payments your child may be entitled to Free School Meals

- Income Support
- Income-based Jobseekers Allowance
- Income-related Employment and Support Allowance
- Support under Part VI of the Immigration and Asylum Act 1999
- The guaranteed element of State Pension Credit
- Child Tax Credit (provided you're not also entitled to Working Tax Credit and have an annual gross income of no more than £16,190)
- Working Tax Credit Run-on – paid for 4 weeks after you stop qualifying for Working Tax Credit
- Universal Credit

If you currently receive free school meals but have now moved into the area, you will need to complete a new Free School Meals Application form

If you wish to apply for Free School Meals, please go to

www.dudley.gov.uk/resident/your-council/council-tax-and-benefits/benefits/free-school-meals

If you need further information, you can contact the Free School Meals Team by:



Telephone -01384 814988



Email – freeschoolmeals.benefits@dudley.gov.uk



Visiting – Dudley Council Plus, Castle Street, Dudley
between 8.30am and 5pm Monday to Friday, 9am and 12 noon Saturday

YOGABRIDGES
PRESENTS

BRITISH WHEEL OF YOGA CERTIFIED

SUITABLE FOR ALL LEVELS OF ABILITY



EVERY THURSDAY | START AT 7.30PM

Ashwood Park Primary School, Bells Lane, Wordsley, Stourbridge, DY8 5DJ

£9 / CLASS OR 10% DISCOUNT FOR FULL TERM

FOR BOOKINGS AND ENQUIRIES PLEASE CALL OR EMAIL JAN:

07764 404975 | janetcooper@blueyonder.co.uk | www.facebook.com/yogawithjan