

Dear Parents and Guardians,

We have two glass display cabinets for sale. They were from Ikea and are 1.65m X 40cm. 3 internal shelves. Great condition. £10 each. Buyer to collect.

We have a vacancy for a Parent Governor on our Governing Board. Information packs are available from the school office.

Please support us by ensuring the children are on time in a morning. School starts at 8.45 am. We want to get the children off to a good start in a morning. Lates are recorded and may result in a fine .

Thankyou to all the parents who attended our Phonics workshop on Tuesda. We hope you found it useful.

We held our Parents' Consultation Meeting on Monday evening. The CEO and School Improvement Officer from St Martins' Trust were in attendance . Only two parents attended but lots of questions were addressed.

May we remind you that the school tie is part of our uniform all year round. The only exception is the Summer dress, **not** the polo shirt. If there is a heat wave School may make the decision that ties can be removed, a message to all parents and carers will be sent out. Ties can be purchased from the School Office or Totally Uniform in Kingswinford.

Nut Allergy

We have a child in School with a severe nut allergy, please do not send any food that contains nuts into School.



Privacy Notice Please take a moment to read our [Privacy Notice](#).

Facebook Do remember to take a look at the School's [Facebook](#) page.

Mr Butler and Mr Perkes

Dinner Dates

The following staff will be in the lunch hall:

Mrs Harris—Monday
Miss Edwards — Wednesday
Miss Webb—Wednesday
Miss Barnett—Wednesday
Miss Benson—Thursday

It would be wonderful to see as many children as possible joining the teachers in enjoying a school dinner. We hope this helps make lunchtime a highlight of the day!

We look forward to seeing you!

Dudley Performing Arts Instrumental Super Demo Evening

DPA (Dudley Performing Arts) is holding a drop in Super Demo evening on Thursday 21st May at Cable Plaza between 16:30 – 19:30 for children interested in starting instrumental lessons.

DPA teachers will be on hand to show you the range of instruments that children can learn, either in school or after school at Cable Plaza. Children can have a go at playing an instrument, find out about singing lessons, meet the teachers and ask any questions you have.

Enrolment for September lessons will be available during the evening.

Come and drop in on **Thursday 21st May**, Cable Plaza, Waterfront West, Brierley Hill, DY5 1LW between 16:30 – 19:30.

If you have any questions please contact:

dpa.cs@dudley.gov.uk



Dates for the Diary

Thursday 7th May 2026

Voting Day—Closed to Children

Friday 8th May 2026

INSET Day—Closed to Children

W/C Monday 11th May 2026

Year 6 SATs

Friday 22nd May 2026

MUFTI Day—Bleed Kit Fundraiser

Mon 25th to Fri 29th May 2026

Half Term

Mon 1st to Fri 5th June 2026

Health Week inc Sports Days

Mon 8th to Wed 10th June 2026

Y6 Residential Trip

Thursday 16th July 2026

Y6 Leavers Party

Friday 17th July 2026

Y6 Leavers Assembly

End of term

Monday 20th July 2026

INSET Day—Closed to Children

Please note INSET days are provisional and are subject to change

Praise Assembly

Children who gained badges and certificates deserve our special congratulations: **29/04/2026**

RR Foxes	- Archie M
1CB Moles	- Robyn
1/2JB Squirrels	- Millie G
2W Badgers	- Finley
3/4D Chestnut	- William
3/4R Oak	- William
4H Elder	- Ella
5/6D Beech	- Millie
5/6E Holly	- Ben
6BB Rowan	- Dylan
6BB Rowan	- Ruth

Menu* wc **04.05.26** (Week 1)

Monday

May Day Bank Holiday
School Closed

Tuesday

BBQ Pulled Quorn Taco (V)
Chicken Nuggets (H option)
Fish Option
Herby Diced Potatoes
Chocolate Brownie

Wednesday

Roast Chicken (H option)
Cheesy Cauliflower & Broccoli Bake (V)
Fish Option
Gravy & Mash
Muffin Selection

Thursday

Local Elections
School Closed to Pupils

Friday

INSET Day
School Closed to Pupils

All dinners must be booked through Arbour the day before they are needed. Please contact the school office if you are having any issues.

* Subject to change

Early Years



We have had a big push on reading this week. Please listen to your child read as much as possible and sign their reading record each time. We will award dojos for every time!

Thanks for all your support!

The children had a lovely time learning about occupations this week, they met lots of staff around school and made a poster about what they would like to be in the future. Some super aspirations!

KS1 News



This week we have been following and writing instructions of how to make a lighthouse sandwich. The children made their own sandwiches and had great fun tasting them! Then we wrote the instructions for others to follow to recreate our delicious creations. We have also been working hard on fractions in maths and the children have been learning about the words numerator and denominator. Next week we will continue to make our moving monster design come to life in Design technology.



Bank Holiday Challenge!

This bank holiday weekend, our Year 3/4 classes are going head-to-head in a TTRS Battle!

It's a great chance to have fun, build confidence, and practise those all-important times tables ready for the MTC in June. Every question answered helps your class climb the leader board! Log in, join the challenge, and see how much you can improve—while helping your class aim for the top!

TT Rockstars



1. William 3/4R
2. Suma 4H
3. Kobie 3/4R

Well done!

RBDC



What a brilliant week we have had this week.

In Acorns we have been working very hard. We have been looking at common number facts and recalling this instantly. We have also been identifying coins from 1p to £2. We will be focusing on this for a few weeks.

In Conkers we have been using natural objects found around school to create landscapes. We had to think carefully about our choices. We had fun arranging everything carefully.

In Personal Understanding of Deafness (PUDs), each group have been looking at different topics.

Yr1/2 PUDs - Continued focusing on assistive listening devices and the history of them.

Yr3/4 PUDs - Continued looking at the changes in hearing aids and how access to equipment changed.

Yr5/6 PUDs - Continued looking at Charles-Michel de l'Épée and how he influenced changes for people who were deaf.

This weeks signed video is about 'Clothes'. Please share with your child.

<https://www.youtube.com/watch?v=J8PJ9oUpu4>

Sign of the week:



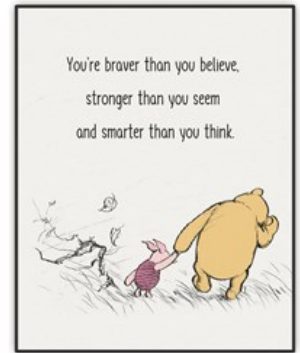
KS2 News



It has been another fantastic week, with all of the children continuing to work incredibly hard and show great enthusiasm in their learning.

In PE, pupils have been thoroughly enjoying a wide range of activities including cricket, rounders, athletics and swimming, giving them the chance to stay active and have fun. These sessions are helping the children to develop a variety of important skills such as teamwork, coordination, resilience and confidence. It has been wonderful to see them supporting one another and striving to improve each week.

Across all subjects, their positive attitudes and determination are shining through. We are very proud of their efforts and look forward to another successful week ahead.



PE

Years 3/4 - Mon (bring your kit) and Thurs (come to school wearing your kit)

Years 5/6 - Fri (bring your kit) and Wed (come to school wearing your kit)

When the children come to school in their PE kit they must wear their yellow PE top, green shorts / **black joggers** and their green Ashwood Park jumper or cardigan.

Hoodies and gilets are **not** permitted.

Maths Problem:

Cool Clothes Combinations

Jaden packed his suitcase for the holiday and has included four T-shirts and three pairs of shorts.



Help him to work out how many different outfits he can make by combining the different tops and shorts.



Scouts

2nd Wordsley (Holy Trinity)

#SkillsForLife

JOIN THE ADVENTURE!

FUN, FRIENDSHIP, CONFIDENCE & SKILLS FOR LIFE



BEAVERS

WEDNESDAYS
6:00 – 7:15pm

Games, crafts, and their first big adventures

beavers@2ndwordsley.org.uk



cubs

MONDAYS
7:00 – 8:30pm

Build skills, make friends, and take on new challenges

cubs@2ndwordsley.org.uk



SCOUTS

FRIDAYS
7:00 – 9:00pm

Adventure, leadership, and unforgettable experiences

scouts@2ndwordsley.org.uk



BASED IN WORDSLEY

2nd Wordsley (HT),
Rear of Holy Trinity Church,
High Street, DY8 5RU



EMAIL US TODAY TO BOOK FREE TASTER SESSIONS!



Parent & Carer Support

Drop-in

Parents and Carers are warmly invited to drop in to Cranstoun Routes for a Drop in session on the first Friday of every month between 1:30pm - 2:30pm!

Starting from Friday 1st May 2026

CRANSTOUN ROUTES

Unit L14, The Boulevard
Merry Hill Shopping Centre
Dudley
DY5 1QX

Fridays at 1:30 - 2:30

THIS OFFERS:

- Guidance on supporting their young person
- A space to ask questions
- Signposting to further service



The Mary Stevens Hospice Open Event

We welcome everyone from our community to gain insight into the care and services that The Mary Stevens Hospice provides.

As part of the event you are invited to join us in our:

Children's memory making sessions

Children can take part in simple, creative activities to make keepsakes they can take home.

Children should be accompanied by an adult, who is encouraged to join in, support them, and enjoy the activities together. (Booking required)



You can also take part in:

- A tour of our Bereavement Services Lodge
- Talking Cafe (booking required)



221 Hagley Road,
Day Services Unit
at The Mary Stevens Hospice



Saturday 9th May
Drop in between 10am - 1pm



To register your interest or book onto the activities, visit marystevenshospice.co.uk or by scanning the QR code.



CHANCE TO SHINE
STREET

FREE STREET CRICKET



INDOOR CRICKET AGE 7-15

COMMUNITY CRICKET SESSIONS PLAYED WITH A SOFTBALL
ALL EQUIPMENT PROVIDED, NO EXPERIENCE NECESSARY

WANT MORE INFORMATION?

WEDNESDAYS
5:30 – 6:30PM
THE WORDSLEY SCHOOL
DY8 5SP



WORCESTERSHIRE
CRICKET FOUNDATION

For more information contact:

jamie.watson@worcestershirecricketfoundation.co.uk

07376 534926



WORCESTERSHIRE
CRICKET FOUNDATION

DDCS CHARITY FUNDRAISING

QUIZ NIGHT!

TEST YOUR KNOWLEDGE & HAVE FUN FOR A GOOD CAUSE!

★ RAFFLE PRIZES ★ BAR AVAILABLE ★

Tickets £5 per person
(Choice of cob included)
Maximum 6 persons per team
Age 10+

FRIDAY 15TH MAY 2026 • 7:30 PM

AT AMBLECOTE BRITISH LEGION, SCHOOL DRIVE, DY8 4DQ
Contact: dudleydeafchildrenssociety@yahoo.com or +447707404014 for tickets

DDCS Fundraising Raffle!

Prizes include:

- Family Ticket to Cotswold Farm Park
- Meal Voucher for **HICKORY'S** STEAK HOUSE
- Family Ticket to Wild Zoological Park
- 50% Discount on Panto Tickets for Wolverhampton Grand Theatre
- Prosecco, Wine, Chocolates, Gift Sets and more!

Tickets cost:
£2 for a strip of 5 or £5 for 3 strips of 5

Contact dudleydeafchildrenssociety@yahoo.com for tickets

Raffle to be drawn at our Quiz Night on **Friday 15th May**

FRIDAY 15TH MAY 2026 • 7:30 PM

AT AMBLECOTE BRITISH LEGION, SCHOOL DRIVE, DY8 4DQ
Contact: dudleydeafchildrenssociety@yahoo.com or +447707404014 for tickets

TFA

COACHING CAMPS

WHIT WEEK FOOTBALL TRAINING CAMP

TUES 26TH, WEDS 27TH & THURS 28TH MAY

AGES 6-14  BOYS & GIRLS  9AM-3PM

£30/DAY OR **£75**/3 DAYS

ONLINE REGISTRATION
WWW.THEFOOTBALLERSACADEMY.CO.UK

EARLY DROP OFF 8:30-9:00AM **£5**
LATE PICK UP 3-4PM **£10**

CAMP INCLUDES

-  Skills & Drills
-  Individual Comps & Team Tournaments
-  Fantastic 4G Pitch
-  Certificates & Prizes

COACHED BY
RUSS PENN &
JIMMY O'CONNOR

 **STOURTON PARK, STOURBRIDGE**



Weetabix

Wild CATS

GIRLS' FOOTBALL



GIRLS' FOOTBALL TRAINING SESSIONS!

AGES 5-11 YEARS

@ ENVILLE PAVILION, DRIVE, DY7 5HB

2PM TIL 3PM WEEKLY

JOIN US EVERY SUNDAY FOR FUN GIRLS' FOOTBALL TRAINING SESSIONS FOR AGES 5-11! ALL ABILTIES WELCOME!



FOR MORE INFO EMAIL:
Envillewildcats@outlook.com

Healthy Families: Growing Up



Join our parent group

Healthy, thriving children and families



HENRY's free **Healthy Families Growing Up** programme is for parents and carers of primary-school age children – it will help you develop a healthier, happier lifestyle that the whole family can enjoy.

The programme covers these 5 themes across 8 sessions and provides everything you need to help your children flourish.

- Feeling more confident as a parent
- Physical activity for the whole family
- What children and the whole family eats
- Family lifestyle habits
- Enjoying life as a family

Get in touch to sign up now!

"This was the best thing I could possibly have done to help me be a better mum"



How to book a place

Visit www.dudleyparents.co.uk or scan the QR Code and click on the HENRY tile to book your place



Programme details

For parents or carers with children aged 5 - 12 years
Day/time: Wednesday, 09.30 - 11.30
First session: 28 January 2026
Last session: 25 March 2026
Length: 8 sessions
 Optional session on 14 January to learn more about the course and meet the facilitators.
Venue: Brierley Hill Family Hub, 18 Parkes Street, DY5 3DY

Preparation for Parenthood



Are you pregnant?

A FREE 6-session programme helping you prepare for the arrival of your baby. Partners, friends or family are encouraged to attend alongside expectant mothers.

- Practical, evidence-based information to support you as you prepare to become a parent
- A great opportunity to meet other expectant parents and build friendships within your community
- Join the thousands of families across the country who have benefited from a HENRY programme



Session 1

Becoming a parent

Session 2

A healthy pregnancy

Session 3

Bonding

Session 4

Caring

Session 5

Giving birth

Session 6

Life after birth

"Exceeded my expectations!"
Expectant parent



Day/time: Mondays, 12.30pm - 2.30pm

First session: 9 February 2026

Last session: 23 March 2026

Length: 6 weeks

Optional session on 2 February to learn more about the course and meet the facilitators.

Venue: The Source Youth Centre, Barnett Lane, DY8 5PY



Visit www.dudleyparents.co.uk or scan the QR Code and click on the HENRY tile to book your place.

A great start in life Do you have a child under 5?

Would you like to:

- feel more confident as a parent?
- reduce mealtime stress?
- enjoy being active as a family more often?
- encourage your child away from screens and TV?
- see your child eat more fruit and vegetables?
- gain ideas to help with family routines?

"I will be recommending this course to everyone. Thank you for this life changing opportunity."

Free Healthy Families Right from the Start programmes

Programme 1: **Day/time:** Tuesday, 09.45 - 11.45

Start date: 20 January 2026, **End date:** 24 March 2026

Length: 9 sessions, **Venue:** Lye Family Hub, Lye By-pass, DY9 8HT

Programme 2: **Day/time:** Thursday, 09.45 - 11.45

Start date: 22 January 2026, **End date:** 26 March 2026

Length: 9 sessions, **Venue:** Stourbridge Family Hub, Forge Road, DY8 1XF

Visit

www.dudleyparents.co.uk or scan the QR Code and click on the HENRY tile to book your place.



Starting Solids Free local workshops



Introducing solid foods is the start of a whole new chapter for you and your baby

Come along!



Introducing solid foods at 6 months

Come to a Starting Solids workshop to help you get your baby off to a great start. The workshop will help you decide:

- When your baby is ready to try solid food
- What foods to start with
- When your baby is hungry and when they've had enough
- How to make mealtimes an enjoyable experience for both of you

Workshops are taking place throughout January, February, March 2026

Visit www.dudleyparents.co.uk or scan the QR code and click on the HENRY tile to book your place





Children's Speech and Language Service (Dudley)

Advice for parents and carers can be found at:

<https://www.blackcountryhealthcare.nhs.uk/our-services/childrens-speech-and-language-therapy-service-dudley>

Dudley's Special Educational Needs and Disabilities Bulletin

The Dudley Special Educational Needs and Disabilities e-bulletin's aim is to keep parent carers, education settings and stakeholders informed about Dudley's Special Educational Needs and Disabilities (SEND) Improvement Programme as well as news and events.

As a system we are working hard to improve our SEND offer across the borough. A lot is happening and we are gathering pace to better support our children, young people and families with SEND.

Our latest bulletin provides:

- updates of our improvement journey including our progress of our Delivering Better Value Programme in SEND
- SEND news from the Dudley Parent Carer Forum, Health, the council and partners
- details of useful events for parent carers and practitioners
- SEND Education Settings News which includes information about free SEND training Resources.

[Sign up now SEND Improvement Programme - September 2024 \(govdelivery.com\)](#) to receive this e-bulletin direct to your email inbox

Health Choices

Dudley Public Health and Wellbeing is part of Dudley Council. We support and enable residents, families and communities to make positive lifestyle changes and improve your health and wellbeing.

There is lots we can do as individuals to stay healthy and well in Dudley borough. This website is a one-stop place for up-to-date public health information and news, from pregnancy and early life to healthy ageing.

<https://healthydudley.co.uk/>

Healthy Lunchboxes

The Healthy Lunchbox Resource is available to support children & families to make healthy, yummy and tooth friendly food choices for their children's lunchbox.

<https://www.dudleyhealthylunchbox.org.uk>

DudleyParents

There is a one stop shop for parents in the Dudley Borough offering support and information . You can gain free access to guidance and support over a range of topics for parents including First 1001 Days as a Parent, DadPad, Five to Thrive, Solihull Approach, Triple P, Parents in Conflict, The Henry Approach.

www.dudleyparents.co.uk/home

Dudley's Local Offer is a new one stop shop website for children and young people with special educational needs and disabilities (SEND) and their parents and carers.

The website contain a wealth of up to date information on areas which include education, training and work, health, leisure and fun, care and moving into adulthood. The website aims to help young people and parents to make individual, informed, positive decisions and choices



The Dudley family hub network is a one-stop shop, offering advice and support for families in Dudley with children aged 0-19 (25 if the child has special educational needs and/or disabilities). It includes an online offer and five local family hubs.

The network includes key Start for Life services. These cover the period from conception to age two. Core Start for Life services such as midwifery, health visiting and early years support are included.

<https://www.dudley.gov.uk/residents/early-years-and-childcare/dudley-family-hub-network/>

SEN Soft Play Sessions

Dudley leisure centres offer soft play sessions for children with SEN:

At Duncan Edwards Leisure Centre, there is a SEN soft play session **every Wednesday from 5.00pm - 6.00pm**

At Halesowen, there is a SEN soft play session **every Monday from 4.30pm - 6.00pm**.

Both sessions are suitable for children under 11 years of age with disabilities, special educational needs, ASD and their siblings.

New Sensory Room at Coseley Family Hub
Parents and carers can now book time in a NEW sensory room at the local family hub in Coseley. The FREE space is bookable for between 30min to an hour and gives the chance for children of all ages to explore a range of sensory activities with their parents/carers.

The sessions are self-led but staff will be on hand to support or answer any questions. To book call the hub on 01384 813096.

[Soft play | DB Leisure](#)

Parent Carer Forum Update:

Aiming for Brighter Futures



Dudley Parent carer Forum welcome registrations for membership from parent/carers and also offer associate memberships to wider family members or practitioners working within Dudley. Joining up means you will be kept up to date on all the latest news, information and events doing on in Dudley. Parents/ Carers will also receive a FREE gift when they sign up!

[Sign Up Here](#)

Integrated Early Years Service Parent Support Group



This group offers support to parents and carers of children with a range of additional needs. It provides supportive environment to engage with your child, and also to gain practical advice for everyday routines.

[See More Details Here](#)

Autism



Autism Central is a website for parents. It aims to **“signpost you to information on a wide range of topics around autism and support that is available from Autism Central, our partner organisations and other trusted sources”**

<https://www.autismcentral.org.uk/resources>

SEN Help

Kids are a charity who create life-changing opportunities by providing a wide range of support to families. They run playscheme days at their centre alongside community days for signed up families. Parent/carers wishing to refer or register with Kids for care planned services can do so by requesting a referral form via the enquiries email: enquiries.orchard@kids.org.uk or via telephone: 01384 897489.

Sassy Sensory surprises are launching 'Wellbeing Walks', they will take place in a different location each month.

Contact toni@sassysensorysurprises.co.uk for further details. Information can be found on their website regarding their recently launched sensory lending library.

Happier Minds

Whether you are a young person, a parent/ carer or a professional working with young people we hope this site will be helpful to you and those you care about.

<https://happierminds.org.uk/>

Dudley's Disability register

Dudley Council have **revamped its Disability Register** to better support children and young people with disabilities and their families. The register is a **voluntary and confidential list** that helps the council plan and deliver better services, tailored to local needs. It's quick and easy to register! **Benefits include** families who register can request a **free day pass** for entry to **Dudley Zoo** when attending with their child, receive updates about local services, events, and consultations, help shape services and your registration helps Dudley Council understand the needs of families and improve support.

Visit the [Dudley Disability Register page](#) to complete the online form. **For help completing the form or to request your Dudley Zoo pass, contact the Children with Disabilities Team: 0300 555 0050 (press option 1) or email: businesssupportcdt@dudley.gov.uk**

[We love Carers](#) provide support for carers and their families all year round. Information, advice, signposting, advocacy, help with form filling and much more. Weekly play sessions and holiday play sessions for children with disabilities and additional needs are available. **Their Autumn and Winter timetable can be found [here](#). Contact them via email hello@welovecarers.org or telephone 01384 396626** for further information on any of the above.

[Kids](#) are a charity who create life-changing opportunities by providing a wide range of support to families. They run playscheme days at their centre alongside community days for signed up families. Parent/carers wishing to refer or register with Kids for care planned services can do so by requesting a referral form via the enquiries email: enquiries.orchard@kids.org.uk or via telephone: **01384 897489**.

[Deaf Children's Society](#) run a **Youth club for children aged 10 to 18 years**, held monthly at Queens Cross Network for information or this or on any events they run, email dudleydeafchildrenssociety@yahoo.com for information.

[Dudley leisure centres](#) are all-inclusive, encouraging everyone to access as many sessions as possible. Our centres offer quiet and disability sessions for children and adults. Accessible facilities are available throughout each of the leisure centres, family fun disability swimming sessions run throughout the holidays, details below:

Halesowen LC: Saturday's from 2.15pm to 3.30pm

Crystal LC: Friday's 2pm – 4pm

Duncan Edwards LC: Wednesday 2.45pm to 4.30pm or Saturday's 1.15pm to 2.15pm

SEN sessions can be accessed at [Planet Play](#) suitable for children under 11 years of age with disabilities, special educational needs, ASD and their siblings. Sessions take place during the holidays at Duncan Edwards Leisure Centre every Wednesday 5pm to 6pm and at Halesowen Leisure Centre, every Monday 4.30pm to 6pm.

Activezone run disability sports for children, young adults and siblings. (sessions takes place for children aged 5 to 8yrs or 9 to 18yrs) Children can take part in various sports, see the below web pages for dates available at each leisure centre:

[Crystal Leisure Centre](#)

[Duncan Edwards](#)

[Lifted Spirits](#) provide a safe space for families of children with disabilities and SEN, they meet *term time only* every Tuesday 9.30am to 11am.

Unheard Voices are a SEND carers support group run by parents to help other parents and carers. They meet up term time on **Fridays 10.30am to 12pm** at Jubilee Hall, Ladies Walk, Sedgley. DY3 3UA or Thursday evenings (term time) at Humbugs café in Sedgley 6pm to 7.30pm. Email unheardvoices13@yahoo.com for further information.

[Hoult's House](#) based in the Rye Market Stourbridge run SEND Sessions on Monday and Tuesdays from 2.245pm to 4.15pm, low level sound and limited numbers.

Dudley SENDIASS Workshops

For parents/carers of children with SEND and young person with SEND up to 25 years old seeking further information about SEND support and processes in education.

Academic Year 2025 – 2026	SEPTEMBER	NOVEMBER	JANUARY	MARCH	APRIL	JUNE
All workshops 10am – 11.30am on Teams						
Understanding how to access SEN support within settings	8 th	21 st	22 nd	4 th	21 st	22 nd
Understanding the EHC Needs Assessment request process	9 th	17 th	23 rd	5 th	22 nd	23 rd
How to check a draft plan	10 th	18 th	19 th	6 th	23 rd	24 th
Preparation and process for annual review	11 th	19 th	20 th	2 nd	24 th	25 th
Preparation for key transitions	12 th	20 th	21 st	3 rd	20 th	26 th



To book on to a workshop email dudley.sendiass@dudley.gov.uk

[Dudley SENDIASS Website](#)

Dudley SENDIAS Service offers information, advice and support on all matters relating to SEN and disabilities including health and social care to parents and carers of children with SEND and Young People with SEND up to 25 years old.

Helping Children Get the Best Start in Life

Free Programmes & Workshops

HENRY supports families to **build healthier habits and routines** that support children's physical and emotional wellbeing, right from the start and as they grow.

A range of **free, friendly and practical sessions** are available to **parents and carers in Dudley** with children aged **0-12**, as well as those expecting a baby.



WANT MORE
INFORMATION?

or visit www.dudleyparents.co.uk

Body safety matters

Helping your child understand boundaries and personal safety

Keeping children safe starts with conversation

Talking about body safety can feel uncomfortable – but it's one of the most powerful ways to protect children. Children who understand their bodies, boundaries and rights are more confident and better equipped to speak up if something feels wrong.

You don't need a big formal talk – short, everyday chats work best.

Here are some simple conversation starters you can use:

- “Do you know what parts of your body are private?”
- “If someone made you feel uncomfortable, who would you tell?”
- “Has anyone ever asked you to keep a secret that made you feel funny or unsure?”
- “You're allowed to say 'no' to hugs or kisses, even to family – how do you feel about that?”
- “What would you do if someone touched you in a way you didn't like?”

Use natural moments (e.g. bath time, getting dressed, bedtime stories, a walk in the park) to bring up the topic gently. Keep your tone calm and reassuring. The goal is to help children feel safe, heard and empowered.

Reassure them: “You can always talk to me about anything – I'll always listen and help.”

Don't forget the online world

Even at primary age, many children play games or watch content online. It's important they know that body safety rules apply online too.

- Teach them never to share photos of their body, especially private parts.
- Make sure they know: if anyone asks them to do something that feels odd, secret or confusing online, they should tell you straight away.
- Talk about how some people online might pretend to be children when they're not.
- Use privacy settings and supervise young children during screen time.
- Remind them: “If something online makes you feel uncomfortable or unsure, it's never your fault. Just come and tell me.”

How you can support at home

- 1) Use everyday moments to talk about safety.
- 2) Read books together on body safety.
- 3) Practice naming trusted adults they can go to if worried.
- 4) Reassure them: they will never be in trouble for telling the truth.

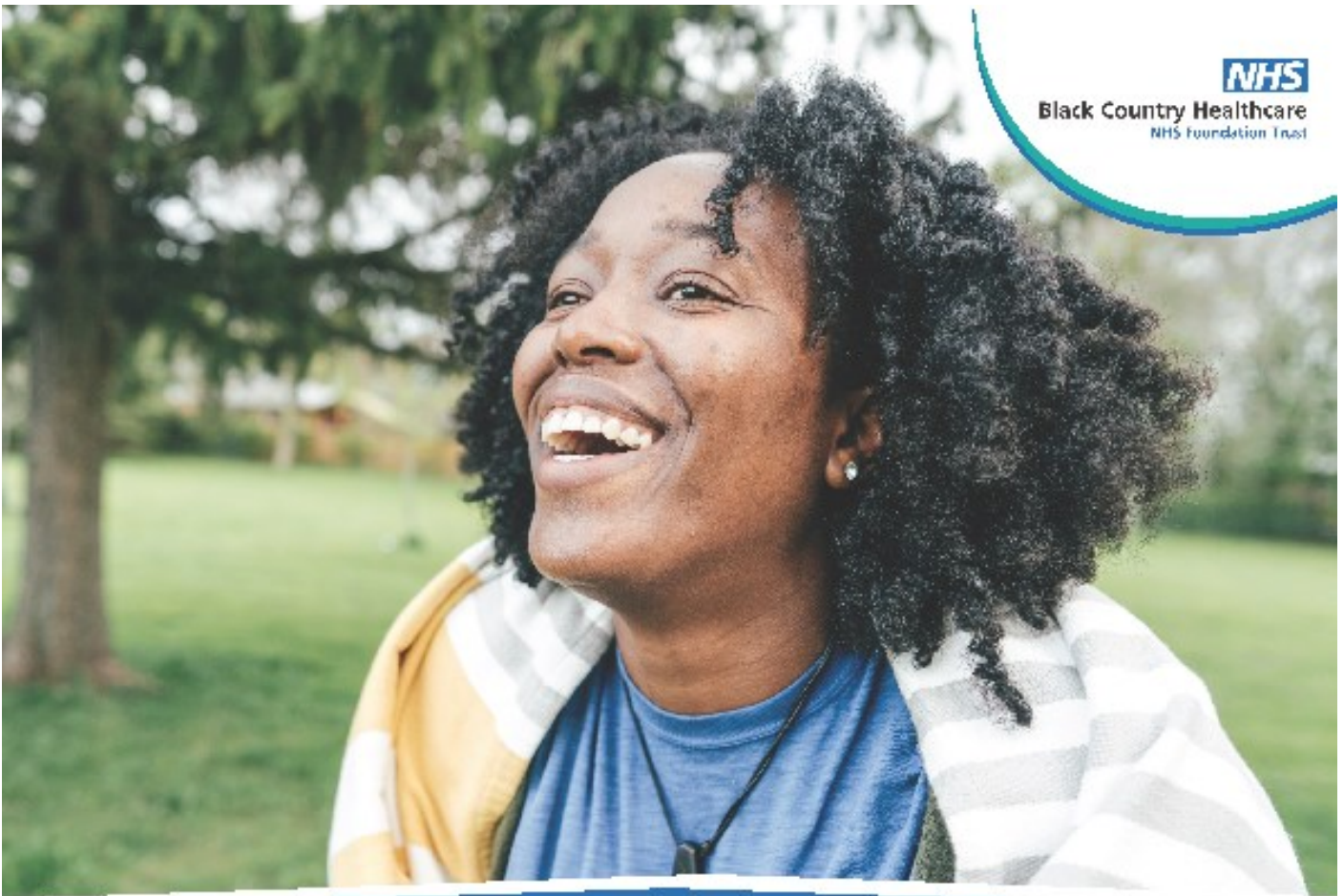
WHAT CHILDREN NEED TO KNOW

THEIR BODY BELONGS TO THEM
Children should know that they are the boss of their own body. No one – not a peer, adult, friend or family member – has the right to touch them in a way that makes them feel uncomfortable.

PRIVATE PARTS ARE PRIVATE
Teach them the correct names for private body parts (e.g. penis, vagina, bottom). This helps remove shame and confusion – and makes it easier to report any concerns clearly.

THE 'NO, GO, TELL' RULE
If someone makes them feel unsafe or breaks a body boundary:
Say "NO"
GO to a safe place
TELL a trusted adult.

SAFE AND UNSAFE TOUCH
Help your child understand:
Safe touch: hugs, holding hands if they want to
Unsafe touch: touches that hurt, feel scary, confusing, or are kept secret.



**We help with anxiety,
depression, or stress**

NHS
Dudley
Talking Therapies

FREE confidential, and tailored for you

Our experts have helped lots of people in
Dudley become happier and healthier



For anyone aged 16 or over registered with a Dudley GP

Support available via...



In-person



Phone



Video



Online



Workshop



Call 0800 953 0404 or self-refer by visiting
www.blackcountryhealthcare.nhs.uk/talking-therapies



Free School Meals

If you receive any of the following support payments your child may be entitled to Free School Meals

- Income Support
- Income-based Jobseekers Allowance
- Income-related Employment and Support Allowance
- Support under Part VI of the Immigration and Asylum Act 1999
- The guaranteed element of State Pension Credit
- Child Tax Credit (provided you're not also entitled to Working Tax Credit and have an annual gross income of no more than £16,190)
- Working Tax Credit Run-on – paid for 4 weeks after you stop qualifying for Working Tax Credit
- Universal Credit

If you currently receive free school meals but have now moved into the area, you will need to complete a new Free School Meals Application form

If you wish to apply for Free School Meals, please go to

www.dudley.gov.uk/resident/your-council/council-tax-and-benefits/benefits/free-school-meals

If you need further information, you can contact the Free School Meals Team by:



Telephone -01384 814988



Email – freeschoolmeals.benefits@dudley.gov.uk



Visiting – Dudley Council Plus, Castle Street, Dudley
between 8.30am and 5pm Monday to Friday, 9am and 12 noon Saturday



YOGABRIDGES
PRESENTS

BRITISH WHEEL OF YOGA CERTIFIED

SUITABLE FOR ALL LEVELS OF ABILITY



EVERY THURSDAY | START AT 7.30PM

Ashwood Park Primary School, Bells Lane, Wordsley, Stourbridge, DY8 5DJ

£9 / CLASS OR 10% DISCOUNT FOR FULL TERM

FOR BOOKINGS AND ENQUIRIES PLEASE CALL OR EMAIL JAN:

07764 404975 | janetcooper@blueyonder.co.uk | www.facebook.com/yogawithjan