

12 June 2026
Newsletter No. 33
Tel: 01384 818545 info@ashwood.dudley.sch.uk

Article 28 Every child has the right to an education

Dear Parents and Guardians,

The closing date for the Parent Governor election is 15th June. Please send your ballot papers into the school office. Thanks.

Year 6 have had an incredible time at Pioneer this week. Well done to all and a very grateful thanks to the staff who have supported them.

Nut Allergy

We have a child in School with a severe nut allergy, please do not send any food that contains nuts into School.



Privacy Notice Please take a moment to read our [Privacy Notice](#).

Facebook Do remember to take a look at the School's [Facebook](#) page.

Mr Butler and Mr Perkes

Praise Assembly

Children who gained badges and certificates deserve our special congratulations:

10/06/2026

RR Foxes	-	Emilia
1CB Moles	-	Jackson
1/2JB Squirrels	-	Savannah
2W Badgers	-	
3/4D Chestnut	-	Thomas K
3/4D Chestnut	-	Carter C
3/4R Oak	-	Aiden
4H Elder	-	Jacob
5/6D Beech	-	Freya
5/6D Beech	-	Ellie-Mae
5/6E Holly	-	
6BB Rowan	-	

Well Done!



Summer Term After School Clubs

JAM CODING

Monday

Jam Coding - Retro games - KS2
Football - KS2

Tuesday

Football - Years 1 & 2

Wednesday

Art - KS2

Thursday

Street Dance - KS2

Friday

Forest School - Years 3, 4 & 5

Log into the Arbor App to register and pay

Menu* wc **15.06.26** (Week 3)

Monday

Beef Bolognese
Beef Burger (H)
Country Garden Vegetable Bake (V)
Herby Diced Potatoes
Wholewheat Pasta
Marble Sponge & Choc Sauce

Tuesday

Original Chicken Tikka Masala
Spanish Style Quorn Paella(V)
Rice

Chocolate Crowns

Wednesday

Chicken Meatballs
Roast Chicken (H)
Golden Cheddar Cheese
& Potato Pie (V)

Stuffing & Gravy
Mashed Potatoes

Ice Cream

Thursday

Wholemeal Cheese & Tomato Pizza (V)
BBQ Chicken Wrap

Rice or Potato Wedges
Cookie Selection

Friday

Ocean Friendly Fish Selection
Oven Baked Mac 'n' Cheese (V)
Chips
Fruity Jelly

All dinners must be booked through Arbour the day before they are needed. Please contact the school office if you are having any issues.

* Subject to change



PTA Rainbow Run Friday 12th June

KS1: Please wear 'BRIGHT coloured' clothing suitable for a sporting activity.

KS2: Please wear Ashwood Park PE Kit

All the details are on DOJO.

Thank you for your support



Dinner Dates

The following staff will be in the lunch hall:

Mrs Harris—Monday
Mr Dimmock—Monday
Miss Webb—Wednesday
Miss Barnett—Wednesday
Miss Benson—Thursday

It would be wonderful to see as many children as possible joining the teachers in enjoying a school dinner. We hope this helps make lunchtime a highlight of the day!

We look forward to seeing you!

Dates for the Diary

Friday 12th June 2026

PTA Rainbow Run

Wednesday 24th June 2026

Y5&6 Sports Day

Thursday 25th June 2026

Y5&6 Sports Day

Monday 29th June 2026

Y5 Parents Meeting—Pioneer

Thursday 16th July 2026

Y6 Leavers Party

Friday 17th July 2026

Y6 Leavers Assembly

End of term

Monday 20th July 2026

INSET Day—Closed to Children

Tuesday 1st September 2026

INSET Day—Closed to Children

Wednesday 2nd September 2026

Children Return to School

Please note INSET days are provisional and are subject to change

Early Years News

Reception have been learning about transport this week! They have enjoyed seeing different types of transport in the past and have learned a poem about a train!

We had a fantastic time at Forest School on Friday, with our Forest School leader, Maddie.

The children also completed their 'Rainbow Run' so if you have any sponsor money, please do send it in. Many thanks!



KS1 News

This week the children have been creating textured pictures in their Art lessons about Life in Colour. We went around school to find different materials from nature to create a range of different colours and textures. Then we use paint, pencil crayon and different medias to recreate them in our sketch books. The children have enjoyed the work so far on mixing new paint colours and learning how to make lighter and darker shades. Next week we are going to be finding out more about Monarchs in history and discovering more about our own monarch King Chares III.



Pioneer 2027

If your child is currently in Year 5, and you would like them to attend The Pioneer Centre residential next year, please come along to our re-scheduled information meeting on Monday 29th June at 2.45 pm.



TT Rockstars



1. Isla Z 4H
2. Emily W 3/4D
3. Iylah G 4H

Well done!

Thank you to those children who have been practising their times tables on TT Rockstars. Please log in regularly to play.

RBDC News

We've had a fantastic and busy first week back after the holidays in the RBDC!

Acorns have been working incredibly hard securing their basic skills and developing their Maths knowledge by learning how to double and halve numbers. In Science, they have started exploring the wonderful world of plants – discovering how they grow and what they need to stay healthy.

Conkers have been learning to tell the time to quarter past and quarter to the hour. In English, they have begun reading their exciting new book, *The Lion Inside*, and have been exploring the characters while using brilliant descriptive language in their work.

In Personal Understanding of Deafness (PUDs), we have been learning about famous Deaf role models and celebrating the achievements of inspiring members of the Deaf community.

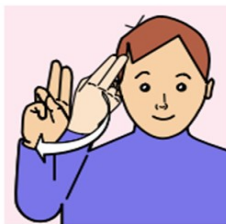
Challenge for home: Can you fingerspell your name?

This video will help you!

<https://youtu.be/lvtekbhdtQA?si=eDkSWI2cn6w-NSs3>

Sign of the Week:

My name is:



KS2 News

Our Year 6 pupils have had a fantastic week on residential at the Pioneer Centre. Throughout their stay, they have embraced a range of exciting challenges, showing determination, resilience and courage as they stepped outside their comfort zones. From adventurous activities to team-building tasks, the children have had lots of fun, created wonderful memories and strengthened friendships. Most importantly, they have represented themselves and our school exceptionally well, demonstrating excellent behaviour, respect and a positive attitude at all times. We are incredibly proud of them all.

Year 4 have been working incredibly hard to complete their Multiplication Tables Check (MTC). It has been wonderful to see the progress they have made throughout the year and the confidence and maturity with which they approached this challenge. A secure knowledge of times tables is a key mathematical skill that will support their learning across many areas of the curriculum as they move into Year 5. Meanwhile, our Year 3 children have been learning all about money, developing their understanding of recognising coins and notes, adding and subtracting amounts, and solving real-life problems involving giving change. In English, our Year 5 pupils and remaining Year 6 children have continued their work on *Podkin One-Ear*, focusing on the challenging skill of using dialogue to advance the action within a narrative. They have been exploring how conversations between characters can move the story forward, build tension and reveal important information to the reader.



Secondary School

Induction Days

Monday 29 th June	Summerhill School
Tuesday 30 th June	Summerhill School
Wednesday 1 st July	Wordsley School Crestwood School
Thursday 2 nd July	Crestwood School Kingswinford School Kinver High
Friday 3 rd July	Kinver High

*Awaiting date from Redhill School

Maths Problem:

- Each of the numbers goes either horizontally from left to right (→), or vertically downwards (↓).
- Can you spot all of the numbers in the grid?

7	6	4	5	0	0	1	8	8	2
4	8	6	4	5	6	2	1	5	8
0	5	8	3	4	4	7	4	6	6
2	5	6	7	3	2	3	3	1	8
2	1	5	1	5	6	6	8	7	6
3	4	0	2	2	3	4	3	1	1
2	2	8	1	1	6	8	1	0	3
1	9	7	1	5	2	2	1	3	5
3	0	7	1	8	0	3	6	0	7
3	1	4	0	2	3	5	0	6	0

402	1515	4022
286	1273	5617
357	2213	6450
431	2811	7180
506	3213	8645
642	3712	9715



Scouts

2nd Wordsley (Holy Trinity)

#SkillsForLife

JOIN THE ADVENTURE!

FUN, FRIENDSHIP, CONFIDENCE & SKILLS FOR LIFE



BEAVERS

WEDNESDAYS
6:00 – 7:15pm

Games, crafts, and their first big adventures

beavers@2ndwordsley.org.uk



cubs

MONDAYS
7:00 – 8:30pm

Build skills, make friends, and take on new challenges

cubs@2ndwordsley.org.uk



SCOUTS

FRIDAYS
7:00 – 9:00pm

Adventure, leadership, and unforgettable experiences

scouts@2ndwordsley.org.uk



BASED IN WORDSLEY

2nd Wordsley (HT),
Rear of Holy Trinity Church,
High Street, DY8 5RU



EMAIL US TODAY TO BOOK FREE TASTER SESSIONS!



CHANCE TO SHINE
STREET

FREE STREET CRICKET



INDOOR CRICKET AGE 7-15

COMMUNITY CRICKET SESSIONS PLAYED WITH A SOFTBALL
ALL EQUIPMENT PROVIDED, NO EXPERIENCE NECESSARY

WANT MORE INFORMATION?

WEDNESDAYS
5:30 – 6:30PM
THE WORDSLEY SCHOOL
DY8 5SP



WORCESTERSHIRE
CRICKET FOUNDATION

For more information contact:

jamie.watson@worcestershirecricketfoundation.co.uk

07376 534926



WORCESTERSHIRE
CRICKET FOUNDATION

Weetabix

Wild CATS

GIRLS' FOOTBALL



GIRLS' FOOTBALL TRAINING SESSIONS!

AGES 5-11 YEARS

@ ENVILLE PAVILION, DRIVE, DY7 5HB

2PM TIL 3PM WEEKLY

JOIN US EVERY SUNDAY FOR FUN GIRLS' FOOTBALL TRAINING SESSIONS FOR AGES 5-11! ALL ABILTIES WELCOME!



FOR MORE INFO EMAIL:
Envillewildcats@outlook.com

Healthy Families: Growing Up



Join our parent group

Healthy, thriving children and families



HENRY's free **Healthy Families Growing Up** programme is for parents and carers of primary-school age children – it will help you develop a healthier, happier lifestyle that the whole family can enjoy.

The programme covers these 5 themes across 8 sessions and provides everything you need to help your children flourish.

- Feeling more confident as a parent
- Physical activity for the whole family
- What children and the whole family eats
- Family lifestyle habits
- Enjoying life as a family

Get in touch to sign up now!

"This was the best thing I could possibly have done to help me be a better mum"



How to book a place

Visit www.dudleyparents.co.uk or scan the QR Code and click on the HENRY tile to book your place



Programme details

For parents or carers with children aged 5 - 12 years

Day/time: Wednesday, 09.30 - 11.30

First session: 28 January 2026

Last session: 25 March 2026

Length: 8 sessions

Optional session on 14 January to learn more about the course and meet the facilitators.

Venue: Brierley Hill Family Hub, 18 Parkes Street, DY5 3DY

Preparation for Parenthood



Are you pregnant?

A FREE 6-session programme helping you prepare for the arrival of your baby. Partners, friends or family are encouraged to attend alongside expectant mothers.

- Practical, evidence-based information to support you as you prepare to become a parent
- A great opportunity to meet other expectant parents and build friendships within your community
- Join the thousands of families across the country who have benefited from a HENRY programme



Session 1

Becoming a parent

Session 2

A healthy pregnancy

Session 3

Bonding

Session 4

Caring

Session 5

Giving birth

Session 6

Life after birth

"Exceeded my expectations!"
Expectant parent



Day/time: Mondays, 12.30pm - 2.30pm

First session: 9 February 2026

Last session: 23 March 2026

Length: 6 weeks

Optional session on 2 February to learn more about the course and meet the facilitators.

Venue: The Source Youth Centre, Barnett Lane, DY8 5PY



Visit www.dudleyparents.co.uk or scan the QR Code and click on the HENRY tile to book your place.

A great start in life Do you have a child under 5?

Would you like to:

- feel more confident as a parent?
- reduce mealtime stress?
- enjoy being active as a family more often?
- encourage your child away from screens and TV?
- see your child eat more fruit and vegetables?
- gain ideas to help with family routines?

"I will be recommending this course to everyone. Thank you for this life changing opportunity."

Free Healthy Families Right from the Start programmes

Programme 1: **Day/time:** Tuesday, 09.45 - 11.45

Start date: 20 January 2026, **End date:** 24 March 2026

Length: 9 sessions, **Venue:** Lye Family Hub, Lye By-pass, DY9 8HT

Programme 2: **Day/time:** Thursday, 09.45 - 11.45

Start date: 22 January 2026, **End date:** 26 March 2026

Length: 9 sessions, **Venue:** Stourbridge Family Hub, Forge Road, DY8 1XF

Visit www.dudleyparents.co.uk or scan the QR Code and click on the HENRY tile to book your place.



Starting Solids Free local workshops



Introducing solid foods is the start of a whole new chapter for you and your baby

Come along!



Introducing solid foods at 6 months

Come to a Starting Solids workshop to help you get your baby off to a great start. The workshop will help you decide:

- When your baby is ready to try solid food
- What foods to start with
- When your baby is hungry and when they've had enough
- How to make mealtimes an enjoyable experience for both of you

Workshops are taking place throughout January, February, March 2026

Visit www.dudleyparents.co.uk or scan the QR code and click on the HENRY tile to book your place





Children's Speech and Language Service (Dudley)

Advice for parents and carers can be found at:

<https://www.blackcountryhealthcare.nhs.uk/our-services/childrens-speech-and-language-therapy-service-dudley>

Dudley's Special Educational Needs and Disabilities Bulletin

The Dudley Special Educational Needs and Disabilities e-bulletin's aim is to keep parent carers, education settings and stakeholders informed about Dudley's Special Educational Needs and Disabilities (SEND) Improvement Programme as well as news and events.

As a system we are working hard to improve our SEND offer across the borough. A lot is happening and we are gathering pace to better support our children, young people and families with SEND.

Our latest bulletin provides:

- updates of our improvement journey including our progress of our Delivering Better Value Programme in SEND
- SEND news from the Dudley Parent Carer Forum, Health, the council and partners
- details of useful events for parent carers and practitioners
- SEND Education Settings News which includes information about free SEND training Resources.

[Sign up now SEND Improvement Programme - September 2024 \(govdelivery.com\)](#) to receive this e-bulletin direct to your email inbox

Health Choices

Dudley Public Health and Wellbeing is part of Dudley Council. We support and enable residents, families and communities to make positive lifestyle changes and improve your health and wellbeing.

There is lots we can do as individuals to stay healthy and well in Dudley borough. This website is a one-stop place for up-to-date public health information and news, from pregnancy and early life to healthy ageing.

<https://healthydudley.co.uk/>

Healthy Lunchboxes

The Healthy Lunchbox Resource is available to support children & families to make healthy, yummy and tooth friendly food choices for their children's lunchbox.

<https://www.dudleyhealthylunchbox.org.uk>

DudleyParents

There is a one stop shop for parents in the Dudley Borough offering support and information . You can gain free access to guidance and support over a range of topics for parents including First 1001 Days as a Parent, DadPad, Five to Thrive, Solihull Approach, Triple P, Parents in Conflict, The Henry Approach.

www.dudleyparents.co.uk/home

Dudley's Local Offer is a new one stop shop website for children and young people with special educational needs and disabilities (SEND) and their parents and carers.

The website contain a wealth of up to date information on areas which include education, training and work, health, leisure and fun, care and moving into adulthood. The website aims to help young people and parents to make individual, informed, positive decisions and choices



The Dudley family hub network is a one-stop shop, offering advice and support for families in Dudley with children aged 0-19 (25 if the child has special educational needs and/or disabilities). It includes an online offer and five local family hubs.

The network includes key Start for Life services. These cover the period from conception to age two. Core Start for Life services such as midwifery, health visiting and early years support are included.

<https://www.dudley.gov.uk/residents/early-years-and-childcare/dudley-family-hub-network/>

SEN Soft Play Sessions

Dudley leisure centres offer soft play sessions for children with SEN:

At Duncan Edwards Leisure Centre, there is a SEN soft play session **every Wednesday from 5.00pm - 6.00pm**

At Halesowen, there is a SEN soft play session **every Monday from 4.30pm - 6.00pm.**

Both sessions are suitable for children under 11 years of age with disabilities, special educational needs, ASD and their siblings.

New Sensory Room at Coseley Family Hub

Parents and carers can now book time in a NEW sensory room at the local family hub in Coseley. The FREE space is bookable for between 30min to an hour and gives the chance for children of all ages to explore a range of sensory activities with their parents/carers.

The sessions are self-led but staff will be on hand to support or answer any questions. To book call the hub on 01384 813096.

[Soft play | DB Leisure](#)

Parent Carer Forum Update:

Aiming for Brighter Futures



Dudley Parent carer Forum welcome registrations for membership from parent/carers and also offer associate memberships to wider family members or practitioners working within Dudley. Joining up means you will be kept up to date on all the latest news, information and events doing on in Dudley. Parents/ Carers will also receive a FREE gift when they sign up!

[Sign Up Here](#)

Integrated Early Years Service Parent Support Group



This group offers support to parents and carers of children with a range of additional needs. It provides supportive environment to engage with your child, and also to gain practical advice for everyday routines.

[See More Details Here](#)

Autism



Autism Central is a website for parents. It aims to **“signpost you to information on a wide range of topics around autism and support that is available from Autism Central, our partner organisations and other trusted sources”**

<https://www.autismcentral.org.uk/resources>

SEN Help

Kids are a charity who create life-changing opportunities by providing a wide range of support to families. They run playscheme days at their centre alongside community days for signed up families. Parent/carers wishing to refer or register with Kids for care planned services can do so by requesting a referral form via the enquiries email: enquiries.orchard@kids.org.uk or via telephone: 01384 897489.

Sassy Sensory surprises are launching 'Wellbeing Walks', they will take place in a different location each month.

Contact toni@sassysensorysurprises.co.uk for further details. Information can be found on their website regarding their recently launched sensory lending library.

Happier Minds

Whether you are a young person, a parent/ carer or a professional working with young people we hope this site will be helpful to you and those you care about.

<https://happierminds.org.uk/>

Dudley's Disability register

Dudley Council have **revamped its Disability Register** to better support children and young people with disabilities and their families. The register is a **voluntary and confidential list** that helps the council plan and deliver better services, tailored to local needs. It's quick and easy to register! **Benefits include** families who register can request a **free day pass** for entry to **Dudley Zoo** when attending with their child, receive updates about local services, events, and consultations, help shape services and your registration helps Dudley Council understand the needs of families and improve support.

Visit the [Dudley Disability Register page](#) to complete the online form. **For help completing the form or to request your Dudley Zoo pass, contact the Children with Disabilities Team: 0300 555 0050 (press option 1) or email: businesssupportcdt@dudley.gov.uk**

[We love Carers](#) provide support for carers and their families all year round. Information, advice, signposting, advocacy, help with form filling and much more. Weekly play sessions and holiday play sessions for children with disabilities and additional needs are available. **Their Autumn and Winter timetable can be found [here](#). Contact them via email hello@welovecarers.org or telephone 01384 396626** for further information on any of the above.

[Kids](#) are a charity who create life-changing opportunities by providing a wide range of support to families. They run playscheme days at their centre alongside community days for signed up families. Parent/carers wishing to refer or register with Kids for care planned services can do so by requesting a referral form via the enquiries email: enquiries.orchard@kids.org.uk or via telephone: **01384 897489**.

[Deaf Children's Society](#) run a **Youth club for children aged 10 to 18 years**, held monthly at Queens Cross Network for information or this or on any events they run, email dudleydeafchildrenssociety@yahoo.com for information.

[Dudley leisure centres](#) are all-inclusive, encouraging everyone to access as many sessions as possible. Our centres offer quiet and disability sessions for children and adults. Accessible facilities are available throughout each of the leisure centres, family fun disability swimming sessions run throughout the holidays, details below:

Halesowen LC: Saturday's from 2.15pm to 3.30pm

Crystal LC: Friday's 2pm – 4pm

Duncan Edwards LC: Wednesday 2.45pm to 4.30pm or Saturday's 1.15pm to 2.15pm

SEN sessions can be accessed at [Planet Play](#) suitable for children under 11 years of age with disabilities, special educational needs, ASD and their siblings. Sessions take place during the holidays at Duncan Edwards Leisure Centre every Wednesday 5pm to 6pm and at Halesowen Leisure Centre, every Monday 4.30pm to 6pm.

Activezone run disability sports for children, young adults and siblings. (sessions takes place for children aged 5 to 8yrs or 9 to 18yrs) Children can take part in various sports, see the below web pages for dates available at each leisure centre:

[Crystal Leisure Centre](#)

[Duncan Edwards](#)

[Lifted Spirits](#) provide a safe space for families of children with disabilities and SEN, they meet *term time only* every Tuesday 9.30am to 11am.

Unheard Voices are a SEND carers support group run by parents to help other parents and carers. They meet up term time on **Fridays 10.30am to 12pm** at Jubilee Hall, Ladies Walk, Sedgley. DY3 3UA or Thursday evenings (term time) at Humbugs café in Sedgley 6pm to 7.30pm. Email unheardvoices13@yahoo.com for further information.

[Hoult's House](#) based in the Rye Market Stourbridge run SEND Sessions on Monday and Tuesdays from 2.245pm to 4.15pm, low level sound and limited numbers.

Dudley SENDIASS Workshops

For parents/carers of children with SEND and young person with SEND up to 25 years old seeking further information about SEND support and processes in education.

Academic Year 2025 – 2026	SEPTEMBER	NOVEMBER	JANUARY	MARCH	APRIL	JUNE
All workshops 10am – 11.30am on Teams						
Understanding how to access SEN support within settings	8 th	21 st	22 nd	4 th	21 st	22 nd
Understanding the EHC Needs Assessment request process	9 th	17 th	23 rd	5 th	22 nd	23 rd
How to check a draft plan	10 th	18 th	19 th	6 th	23 rd	24 th
Preparation and process for annual review	11 th	19 th	20 th	2 nd	24 th	25 th
Preparation for key transitions	12 th	20 th	21 st	3 rd	20 th	26 th



To book on to a workshop email dudley.sendiass@dudley.gov.uk

[Dudley SENDIASS Website](#)

Dudley SENDIAS Service offers information, advice and support on all matters relating to SEN and disabilities including health and social care to parents and carers of children with SEND and Young People with SEND up to 25 years old.

Free School Meals

If you receive any of the following support payments your child may be entitled to Free School Meals

- Income Support
- Income-based Jobseekers Allowance
- Income-related Employment and Support Allowance
- Support under Part VI of the Immigration and Asylum Act 1999
- The guaranteed element of State Pension Credit
- Child Tax Credit (provided you're not also entitled to Working Tax Credit and have an annual gross income of no more than £16,190)
- Working Tax Credit Run-on – paid for 4 weeks after you stop qualifying for Working Tax Credit
- Universal Credit

If you currently receive free school meals but have now moved into the area, you will need to complete a new Free School Meals Application form

If you wish to apply for Free School Meals, please go to

www.dudley.gov.uk/resident/your-council/council-tax-and-benefits/benefits/free-school-meals

If you need further information, you can contact the Free School Meals Team by:



Telephone -01384 814988



Email – freeschoolmeals.benefits@dudley.gov.uk



Visiting – Dudley Council Plus, Castle Street, Dudley
between 8.30am and 5pm Monday to Friday, 9am and 12 noon Saturday



YOGABRIDGES
PRESENTS

BRITISH WHEEL OF YOGA CERTIFIED

SUITABLE FOR ALL LEVELS OF ABILITY



EVERY THURSDAY | START AT 7.30PM

Ashwood Park Primary School, Bells Lane, Wordsley, Stourbridge, DY8 5DJ

£9 / CLASS OR 10% DISCOUNT FOR FULL TERM

FOR BOOKINGS AND ENQUIRIES PLEASE CALL OR EMAIL JAN:

07764 404975 | janetcooper@blueyonder.co.uk | www.facebook.com/yogawithjan