

## Dear Parents and Guardians,

Mrs Webb will be retiring at the end of term after a career spanning 44 years, 39 spent at Ashwood Park! We all wish her a very happy, healthy and well-earned retirement.

If you would like to contribute to her leaving gift, please see the office staff. Many thanks!

The latest visit to Hickory's took place this week and we were so pleased that the children really enjoyed themselves, they were a credit to us all.

The Year 6 Leavers' Party is on Thursday 16<sup>th</sup> July during the afternoon  
The Year 6 Leavers' Assembly is on Friday 17<sup>th</sup> July at 09.15am in KS2 hall.

We break up for the Summer holidays on Friday 17<sup>th</sup> July at 3.15pm. We have two INSET days in September, Tuesday 1<sup>st</sup> September and Wednesday 2<sup>nd</sup> September. Children return on Thursday 3<sup>rd</sup> September.

### Nut Allergy

We have a child in School with a severe nut allergy, please do not send any food that contains nuts into School.



**Privacy Notice** Please take a moment to read our [Privacy Notice](#).

**Facebook** Do remember to take a look at the School's [Facebook](#) page.

## Mr Butler and Mr Perkes

### Dinner Dates

The following staff will be in the lunch hall:

Mrs Harris—Monday  
Mr Dimmock—Monday  
Miss Edwards—Wednesday  
Miss Webb—Wednesday  
Miss Barnett—Wednesday  
Miss Benson—Thursday

It would be wonderful to see as many children as possible joining the teachers in enjoying a school dinner. We hope this helps make lunchtime a highlight of the day!

## Praise Assembly

Children who gained badges and certificates deserve our special congratulations:

01/07/2026

RR Foxes - Harry  
1CB Moles - Demi  
1/2JB Squirrels - Noah  
2W Badgers - Ariannah  
3/4D Chestnut - Noah  
3/4R Oak - Mohammad  
4H Elder - Lewis  
4H Elder - Deacon  
5/6D Beech - Josh  
5/6D Beech - Rosalee  
5/6E Holly - Lydia  
6BB Rowan - Bella  
6BB Rowan - Iyla

*Well done!*

## Dates for the Diary

### Thursday 16th July 2026

Y6 Leavers Party

### Friday 17th July 2026

Y6 Leavers Assembly

End of term

### Monday 20th July 2026

INSET Day—Closed to Children

### Tuesday 1st September 2026

INSET Day—Closed to Children

### Wednesday 2nd September 2026

INSET Day—Closed to Children

### Thursday 3rd September 2026

Children Return to School

### Monday 19th October 2026

INSET Day—Closed to Children

### Monday 4th January 2027

INSET Day—Closed to Children

### Thursday 6th May 2027

Local Elections—Closed to Children

### Friday 7th May 2027

INSET Day—Closed to Children

## Water Safety Awareness Message from West Midlands Fire Service

During the hot spell over the late May Bank Holiday weekend and half-term holiday, there were a number of tragic incidents around the country, many involving young people. The forecast over the coming weeks is for temperatures to rise again.

To keep yourself and your loved ones safe around water please be aware of the following:

- Of all drownings in 2025, 57% took place in inland water – canals, rivers, lakes, ponds – the type of bodies of water we have lots of in the West Midlands.

- Even if the weather is warm the water may be cold, causing your body to go into cold water shock.

- If you fall into water Float to Live – put your head back, float on your back and keep yourself stable by using small movements of your hands.

- Once you are stable you may call for help or swim to the bank if it is feasible.

- Do not go into the water to save people or pets. Call 999 and ask for the Fire Service.

For more information about staying safe around water please visit the West Midlands Fire Service water safety page (<https://www.wmfs.net/safety/water-safety/>) or the RNLI Education Resources page (<https://rnli.org/youth-education/education-resources>).

## Menu\* wc 06.07.26 (Week 3)

### Monday

Beef Bolognese

Beef Burger (H)

Country Garden Vegetable Bake (V)

Herby Diced Potatoes

or Wholewheat Pasta

Marble Sponge & Choc Sauce

### Tuesday

Original Chicken Tikka Masala

Spanish Style Quorn Paella (V)

Rice

Chocolate Crowns

### Wednesday

Chicken Meatballs

Roast Chicken (H)

Golden Cheddar Cheese & Potato Pie (V)

Stuffing & Gravy

Mashed Potatoes

Ice Cream

### Thursday

Wholemeal Cheese & Tomato Pizza (V)

BBQ Chicken Wrap

Potato Wedges

Cookie Selection

### Friday

Ocean Friendly Fish Selection

Oven Baked Mac 'n' Cheese (V)

Chips

Fruit Jelly

**All dinners must be booked through Arbour the day before they are needed. Please contact the school office if you are having any issues.**

## Early Years News

We've had a good week learning about deserts and shape in reception. The children are doing really well, please do keep reading and writing and doing maths skills with your children at home. An information sheet with lots of ideas has been emailed home to ensure these skills continue throughout the summer and ensure they are best prepared for year 1! Thank you for all your support.



## KS1 News

This week we have been making our own collages using a range of materials including paint and tissue. The children created their own collage images to show different textures.

We have also been writing our own descriptions of the setting in the Pirates Next Door. We tried hard to use new descriptive language and make them as interesting as possible.

Next week we are going to find out more about motte and bailey castles that were built by William the Conqueror.



## Sun Safety

- Use sun cream – Apply before going out and reapply every few hours
- Take shade breaks – Rest and cool down regularly
- Cover up – Hat, sunglasses and light clothing
- Drink plenty – Keep hydrated to avoid feeling unwell

## Water Safety

- Stay in sight of an adult
- Follow pool rules – Walk, don't run
- Open water risks – Can be cold, deep or fast
- Float to live – Lie on your back and stay calm

## Road Safety

- Stay alert when you're out and about
- Stop, Look, listen before crossing
  - Use safe crossings wherever possible
  - Wear bright clothes so drivers can see you
  - Scooters & bikes – Wear a helmet and ride safely

## RBDC News

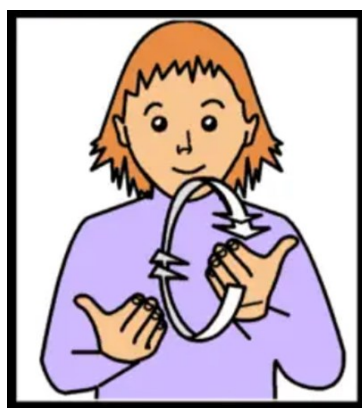
What a lovely, but hot, few days in the RBDC.

In Acorns, we have been so excited with the growth of our plants. Our beans and sunflowers have grown so much. We have really enjoyed measuring using rulers in centimetres.

In Conkers we have said farewell to Miss Martin who has helped us for the last few weeks. We have finally completed our science topic and had a lot of fun making our Super Rockets out of recycled materials.

This weeks signed story is How Big Is A Million? By Anna Millbourne. Please share with your child.

<https://www.youtube.com/watch?v=HNdrAGGT5NI>



Story



## TT Rockstars

1. Emily W 3/4D
2. Freddie C 3/4D
3. Aleksa 4H

Well done!

Thank you to those children who have been practising their times tables on TT Rockstars. Please log in regularly to play.

## KS2 News

It has been a quieter week in school, with our Year 6 children visiting their secondary schools as part of their transition. They have all made a wonderful first impression as they take this exciting next step in their educational journey.

When they have been in School, they have been busy rehearsing their Leavers' Assembly, and we can't wait to share this special performance with you.

Meanwhile, UKS2 have also continued their exciting Science learning about forces. This week, they investigated water resistance by testing different shapes to see how they moved through the water and which floated most effectively.

Year 3/4 children have been developing their creative skills by taking inspiration from patterns found in nature to design and create their own repeating textile-inspired prints. They carefully explored colour, shape and pattern to produce some beautiful artwork.

## PE

**Years 3/4** - Mon (bring your kit) and Thurs (come to school wearing your kit)

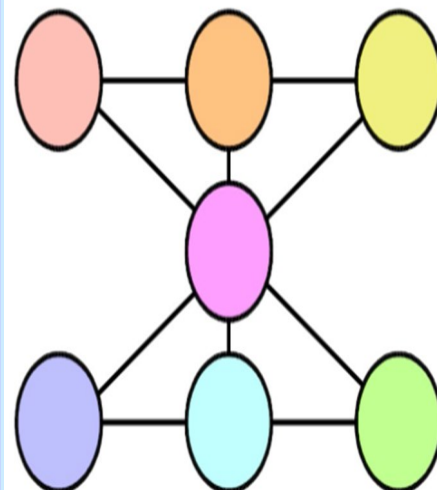
**Years 5/6** - Fri (bring your kit) and Wed (come to school wearing your kit)

When the children come to school in their PE kit they must wear their yellow PE top, green shorts / **black joggers** and their green Ashwood Park jumper or cardigan.



## Maths Problem:

Can you put the numbers 1 to 7 in each circle so that the total of every line is 12?





**£35**  
PER DAY  
£60 for both days

# SUMMER HOLIDAY FOREST SCHOOL CLUB

**MONDAY 3<sup>RD</sup> AUGUST 2026**

**TUESDAY 4<sup>TH</sup> AUGUST 2026**



Come and join Forest School Club at Ashwood Park Primary this Summer Holiday 9.00am- 2.30pm.

Lead by Maddie, a level 3 Forest School Practitioner with over a decade of experience of working with children.

## OUR ACTIVITIES


- Den building
- Fire Lighting
- Using Tools
- Crafts
- Cooking over fire
- Mud Kitchen and water play

## WHAT TO BRING?

- Waterproof coat and trousers
- Sun hat
- Sun cream
- Water bottle
- Packed Lunch

 [maddie@dtforestschool.com](mailto:maddie@dtforestschool.com)

 eventbrite- Dragon Tales Forest School

 Ashwood Park Primary School, Bells Lane, Wordsley, Stourbridge, West Midlands, DY8 5DJ



**Scouts**

2nd Wordsley (Holy Trinity)

#SkillsForLife

# JOIN THE ADVENTURE!

*FUN, FRIENDSHIP, CONFIDENCE & SKILLS FOR LIFE*



## BEAVERS

**WEDNESDAYS**  
6:00 – 7:15pm

Games, crafts, and their first big adventures

[beavers@2ndwordsley.org.uk](mailto:beavers@2ndwordsley.org.uk)



## cubs

**MONDAYS**  
7:00 – 8:30pm

Build skills, make friends, and take on new challenges

[cubs@2ndwordsley.org.uk](mailto:cubs@2ndwordsley.org.uk)



## SCOUTS

**FRIDAYS**  
7:00 – 9:00pm

Adventure, leadership, and unforgettable experiences

[scouts@2ndwordsley.org.uk](mailto:scouts@2ndwordsley.org.uk)



**BASED IN WORDSLEY**

2nd Wordsley (HT),  
Rear of Holy Trinity Church,  
High Street, DY8 5RU



**EMAIL US TODAY TO BOOK FREE TASTER SESSIONS!**



CHANCE TO SHINE  
STREET

# FREE STREET CRICKET



## INDOOR CRICKET AGE 7-15

COMMUNITY CRICKET SESSIONS PLAYED WITH A SOFTBALL  
ALL EQUIPMENT PROVIDED, NO EXPERIENCE NECESSARY

WANT MORE INFORMATION?

WEDNESDAYS  
5:30 – 6:30PM  
THE WORDSLEY SCHOOL  
DY8 5SP



WORCESTERSHIRE  
CRICKET FOUNDATION

For more information contact:

[jamie.watson@worcestershirecricketfoundation.co.uk](mailto:jamie.watson@worcestershirecricketfoundation.co.uk)

07376 534926



WORCESTERSHIRE  
CRICKET FOUNDATION

Weetabix

# Wild CATS

GIRLS' FOOTBALL



## GIRLS' FOOTBALL TRAINING SESSIONS!

AGES 5-11 YEARS

@ ENVILLE PAVILION, DRIVE, DY7 5HB

2PM TIL 3PM WEEKLY

JOIN US EVERY SUNDAY FOR FUN GIRLS' FOOTBALL TRAINING SESSIONS FOR AGES 5-11! ALL ABILTIES WELCOME!



FOR MORE INFO EMAIL:  
[Envillewildcats@outlook.com](mailto:Envillewildcats@outlook.com)

# Healthy Families: Growing Up



Join our parent group

## Healthy, thriving children and families

HENRY's free **Healthy Families Growing Up** programme is for parents and carers of primary-school age children – it will help you develop a healthier, happier lifestyle that the whole family can enjoy.



The programme covers these 5 themes across 8 sessions and provides everything you need to help your children flourish.

- Feeling more confident as a parent
- Physical activity for the whole family
- What children and the whole family eats
- Family lifestyle habits
- Enjoying life as a family

Get in touch to sign up now!

"This was the best thing I could possibly have done to help me be a better mum"



### Programme details

For parents or carers with children aged 5 - 12 years  
**Day/time:** Wednesday, 09.30 - 11.30  
**First session:** 28 January 2026  
**Last session:** 25 March 2026  
**Length:** 8 sessions  
 Optional session on 14 January to learn more about the course and meet the facilitators.  
**Venue:** Brierley Hill Family Hub, 18 Parkes Street, DY5 3DY

### How to book a place

Visit [www.dudleyparents.co.uk](http://www.dudleyparents.co.uk) or scan the QR Code and click on the HENRY tile to book your place



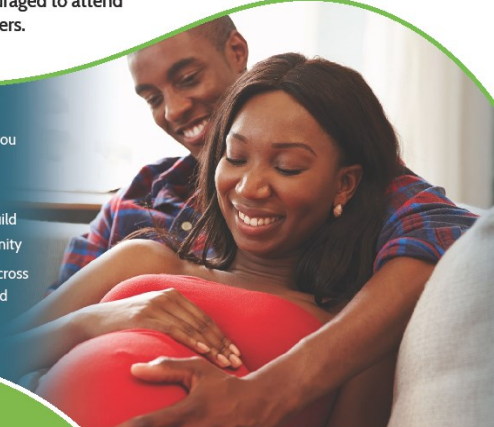
# Preparation for Parenthood



## Are you pregnant?

A FREE 6-session programme helping you prepare for the arrival of your baby. Partners, friends or family are encouraged to attend alongside expectant mothers.

- Practical, evidence-based information to support you as you prepare to become a parent
- A great opportunity to meet other expectant parents and build friendships within your community
- Join the thousands of families across the country who have benefited from a HENRY programme



### Session 1

Becoming a parent

### Session 2

A healthy pregnancy

### Session 3

Bonding

### Session 4

Caring

### Session 5

Giving birth

### Session 6

Life after birth

"Exceeded my expectations!"  
Expectant parent



**Day/time:** Mondays, 12.30pm - 2.30pm

**First session:** 9 February 2026

**Last session:** 23 March 2026

**Length:** 6 weeks

Optional session on 2 February to learn more about the course and meet the facilitators.

**Venue:** The Source Youth Centre, Barnett Lane, DY8 5PY



Visit [www.dudleyparents.co.uk](http://www.dudleyparents.co.uk) or scan the QR Code and click on the HENRY tile to book your place.

# A great start in life Do you have a child under 5?

## Would you like to:

- feel more confident as a parent?
- reduce mealtime stress?
- enjoy being active as a family more often?
- encourage your child away from screens and TV?
- see your child eat more fruit and vegetables?
- gain ideas to help with family routines?

"I will be recommending this course to everyone. Thank you for this life changing opportunity."

### Free Healthy Families Right from the Start programmes

Programme 1: **Day/time:** Tuesday, 09.45 - 11.45

**Start date:** 20 January 2026, **End date:** 24 March 2026

**Length:** 9 sessions, **Venue:** Lye Family Hub, Lye By-pass, DY9 8HT

Programme 2: **Day/time:** Thursday, 09.45 - 11.45

**Start date:** 22 January 2026, **End date:** 26 March 2026

**Length:** 9 sessions, **Venue:** Stourbridge Family Hub, Forge Road, DY8 1XF

Visit [www.dudleyparents.co.uk](http://www.dudleyparents.co.uk) or scan the QR Code and click on the HENRY tile to book your place.



# Starting Solids Free local workshops



Introducing solid foods is the start of a whole new chapter for you and your baby

Come along!



## Introducing solid foods at 6 months

Come to a Starting Solids workshop to help you get your baby off to a great start. The workshop will help you decide:

- When your baby is ready to try solid food
- What foods to start with
- When your baby is hungry and when they've had enough
- How to make mealtimes an enjoyable experience for both of you

Workshops are taking place throughout January, February, March 2026

Visit [www.dudleyparents.co.uk](http://www.dudleyparents.co.uk) or scan the QR code and click on the HENRY tile to book your place





### Children's Speech and Language Service (Dudley)

Advice for parents and carers can be found at:

<https://www.blackcountryhealthcare.nhs.uk/our-services/childrens-speech-and-language-therapy-service-dudley>

### Dudley's Special Educational Needs and Disabilities Bulletin

The Dudley Special Educational Needs and Disabilities e-bulletin's aim is to keep parent carers, education settings and stakeholders informed about Dudley's Special Educational Needs and Disabilities (SEND) Improvement Programme as well as news and events.

As a system we are working hard to improve our SEND offer across the borough. A lot is happening and we are gathering pace to better support our children, young people and families with SEND.

Our latest bulletin provides:

- updates of our improvement journey including our progress of our Delivering Better Value Programme in SEND
- SEND news from the Dudley Parent Carer Forum, Health, the council and partners
- details of useful events for parent carers and practitioners
- SEND Education Settings News which includes information about free SEND training Resources.

[Sign up now SEND Improvement Programme - September 2024 \(govdelivery.com\)](#) to receive this e-bulletin direct to your email inbox

### Health Choices

Dudley Public Health and Wellbeing is part of Dudley Council. We support and enable residents, families and communities to make positive lifestyle changes and improve your health and wellbeing.

There is lots we can do as individuals to stay healthy and well in Dudley borough. This website is a one-stop place for up-to-date public health information and news, from pregnancy and early life to healthy ageing.

<https://healthydudley.co.uk/>

### Healthy Lunchboxes

The Healthy Lunchbox Resource is available to support children & families to make healthy, yummy and tooth friendly food choices for their children's lunchbox.

<https://www.dudleyhealthylunchbox.org.uk>

## DudleyParents

There is a one stop shop for parents in the Dudley Borough offering support and information . You can gain free access to guidance and support over a range of topics for parents including First 1001 Days as a Parent, DadPad, Five to Thrive, Solihull Approach, Triple P, Parents in Conflict, The Henry Approach.

[www.dudleyparents.co.uk/home](http://www.dudleyparents.co.uk/home)

**Dudley's Local Offer** is a new one stop shop website for children and young people with special educational needs and disabilities (SEND) and their parents and carers.

The website contain a wealth of up to date information on areas which include education, training and work, health, leisure and fun, care and moving into adulthood. The website aims to help young people and parents to make individual, informed, positive decisions and choices



The Dudley family hub network is a one-stop shop, offering advice and support for families in Dudley with children aged 0-19 (25 if the child has special educational needs and/or disabilities). It includes an online offer and five local family hubs.

The network includes key Start for Life services. These cover the period from conception to age two. Core Start for Life services such as midwifery, health visiting and early years support are included.

<https://www.dudley.gov.uk/residents/early-years-and-childcare/dudley-family-hub-network/>

### SEN Soft Play Sessions

Dudley leisure centres offer soft play sessions for children with SEN:

**At Duncan Edwards Leisure Centre**, there is a SEN soft play session **every Wednesday from 5.00pm - 6.00pm**

**At Halesowen**, there is a SEN soft play session **every Monday from 4.30pm - 6.00pm**.

Both sessions are suitable for children under 11 years of age with disabilities, special educational needs, ASD and their siblings.

#### New Sensory Room at Coseley Family Hub

Parents and carers can now book time in a NEW sensory room at the local family hub in Coseley. The FREE space is bookable for between 30min to an hour and gives the chance for children of all ages to explore a range of sensory activities with their parents/carers.

The sessions are self-led but staff will be on hand to support or answer any questions. To book call the hub on 01384 813096.

[Soft play | DB Leisure](#)

### Parent Carer Forum Update:

Aiming for Brighter Futures



Dudley Parent carer Forum welcome registrations for membership from parent/carers and also offer associate memberships to wider family members or practitioners working within Dudley. Joining up means you will be kept up to date on all the latest news, information and events doing on in Dudley. Parents/ Carers will also receive a FREE gift when they sign up!

[Sign Up Here](#)

### Integrated Early Years Service Parent Support Group



This group offers support to parents and carers of children with a range of additional needs. It provides supportive environment to engage with your child, and also to gain practical advice for everyday routines.

[See More Details Here](#)

## Autism



Autism Central is a website for parents. It aims to **“signpost you to information on a wide range of topics around autism and support that is available from Autism Central, our partner organisations and other trusted sources”**

<https://www.autismcentral.org.uk/resources>

### SEN Help

**Kids** are a charity who create life-changing opportunities by providing a wide range of support to families. They run playscheme days at their centre alongside community days for signed up families. Parent/carers wishing to refer or register with Kids for care planned services can do so by requesting a referral form via the enquiries email: [enquiries.orchard@kids.org.uk](mailto:enquiries.orchard@kids.org.uk) or via telephone: 01384 897489.

**Sassy Sensory** surprises are launching 'Wellbeing Walks', they will take place in a different location each month.

Contact [toni@sassysensorysurprises.co.uk](mailto:toni@sassysensorysurprises.co.uk) for further details. Information can be found on their website regarding their recently launched sensory lending library.

### Happier Minds

Whether you are a young person, a parent/ carer or a professional working with young people we hope this site will be helpful to you and those you care about.

<https://happierminds.org.uk/>

### **Dudley's Disability register**

Dudley Council have **revamped its Disability Register** to better support children and young people with disabilities and their families. The register is a **voluntary and confidential list** that helps the council plan and deliver better services, tailored to local needs. It's quick and easy to register! **Benefits include** families who register can request a **free day pass** for entry to **Dudley Zoo** when attending with their child, receive updates about local services, events, and consultations, help shape services and your registration helps Dudley Council understand the needs of families and improve support.

Visit the [Dudley Disability Register page](#) to complete the online form. **For help completing the form or to request your Dudley Zoo pass, contact the Children with Disabilities Team: 0300 555 0050 (press option 1) or email: [businesssupportcdt@dudley.gov.uk](mailto:businesssupportcdt@dudley.gov.uk)**

**We love Carers** provide support for carers and their families all year round. Information, advice, signposting, advocacy, help with form filling and much more. Weekly play sessions and holiday play sessions for children with disabilities and additional needs are available. **Their Autumn and Winter timetable can be found [here](#). Contact them via email [hello@welovecarers.org](mailto:hello@welovecarers.org) or telephone 01384 396626** for further information on any of the above.

**Kids** are a charity who create life-changing opportunities by providing a wide range of support to families. They run playscheme days at their centre alongside community days for signed up families. Parent/carers wishing to refer or register with Kids for care planned services can do so by requesting a referral form via the enquiries email: [enquiries.orchard@kids.org.uk](mailto:enquiries.orchard@kids.org.uk) or via telephone: **01384 897489**.

**Deaf Children's Society** run a **Youth club for children aged 10 to 18 years**, held monthly at Queens Cross Network for information or this or on any events they run, email [dudleydeafchildrenssociety@yahoo.com](mailto:dudleydeafchildrenssociety@yahoo.com) for information.

**Dudley leisure centres** are all-inclusive, encouraging everyone to access as many sessions as possible. Our centres offer quiet and disability sessions for children and adults. Accessible facilities are available throughout each of the leisure centres, family fun disability swimming sessions run throughout the holidays, details below:

**Halesowen LC:** Saturday's from 2.15pm to 3.30pm

**Crystal LC:** Friday's 2pm – 4pm

**Duncan Edwards LC:** Wednesday 2.45pm to 4.30pm or Saturday's 1.15pm to 2.15pm

SEN sessions can be accessed at [Planet Play](#) suitable for children under 11 years of age with disabilities, special educational needs, ASD and their siblings. Sessions take place during the holidays at Duncan Edwards Leisure Centre every Wednesday 5pm to 6pm and at Halesowen Leisure Centre, every Monday 4.30pm to 6pm.

**Activezone** run disability sports for children, young adults and siblings. (sessions takes place for children aged 5 to 8yrs or 9 to 18yrs) Children can take part in various sports, see the below web pages for dates available at each leisure centre:

**[Crystal Leisure Centre](#)**

**[Duncan Edwards](#)**

**[Lifted Spirits](#)** provide a safe space for families of children with disabilities and SEN, they meet *term time only* every Tuesday 9.30am to 11am.

**Unheard Voices** are a SEND carers support group run by parents to help other parents and carers. They meet up term time on **Fridays 10.30am to 12pm** at Jubilee Hall, Ladies Walk, Sedgley. DY3 3UA or Thursday evenings (term time) at Humbugs café in Sedgley 6pm to 7.30pm. Email [unheardvoices13@yahoo.com](mailto:unheardvoices13@yahoo.com) for further information.

**Hoult's House** based in the Rye Market Stourbridge run SEND Sessions on Monday and Tuesdays from 2.245pm to 4.15pm, low level sound and limited numbers.

## Dudley SENDIASS Workshops

For parents/carers of children with SEND and young person with SEND up to 25 years old seeking further information about SEND support and processes in education.



Academic Year 2025 – 2026	SEPTEMBER	NOVEMBER	JANUARY	MARCH	APRIL	JUNE
<b>All workshops 10am – 11.30am on Teams</b>						
<b>Understanding how to access SEN support within settings</b>	8 <sup>th</sup>	21 <sup>st</sup>	22 <sup>nd</sup>	4 <sup>th</sup>	21 <sup>st</sup>	22 <sup>nd</sup>
<b>Understanding the EHC Needs Assessment request process</b>	9 <sup>th</sup>	17 <sup>th</sup>	23 <sup>rd</sup>	5 <sup>th</sup>	22 <sup>nd</sup>	23 <sup>rd</sup>
<b>How to check a draft plan</b>	10 <sup>th</sup>	18 <sup>th</sup>	19 <sup>th</sup>	6 <sup>th</sup>	23 <sup>rd</sup>	24 <sup>th</sup>
<b>Preparation and process for annual review</b>	11 <sup>th</sup>	19 <sup>th</sup>	20 <sup>th</sup>	2 <sup>nd</sup>	24 <sup>th</sup>	25 <sup>th</sup>
<b>Preparation for key transitions</b>	12 <sup>th</sup>	20 <sup>th</sup>	21 <sup>st</sup>	3 <sup>rd</sup>	20 <sup>th</sup>	26 <sup>th</sup>



To book on to a workshop email [dudley.sendiass@dudley.gov.uk](mailto:dudley.sendiass@dudley.gov.uk)

[Dudley SENDIASS Website](#)

Dudley SENDIASS Service offers information, advice and support on all matters relating to SEN and disabilities including health and social care to parents and carers of children with SEND and Young People with SEND up to 25 years old.

# Free School Meals

If you receive any of the following support payments your child may be entitled to Free School Meals

- Income Support
- Income-based Jobseekers Allowance
- Income-related Employment and Support Allowance
- Support under Part VI of the Immigration and Asylum Act 1999
- The guaranteed element of State Pension Credit
- Child Tax Credit (provided you're not also entitled to Working Tax Credit and have an annual gross income of no more than £16,190)
- Working Tax Credit Run-on – paid for 4 weeks after you stop qualifying for Working Tax Credit
- Universal Credit

If you currently receive free school meals but have now moved into the area, you will need to complete a new Free School Meals Application form

If you wish to apply for Free School Meals, please go to

[www.dudley.gov.uk/resident/your-council/council-tax-and-benefits/benefits/free-school-meals](http://www.dudley.gov.uk/resident/your-council/council-tax-and-benefits/benefits/free-school-meals)

If you need further information, you can contact the Free School Meals Team by:



Telephone -01384 814988



Email – [freeschoolmeals.benefits@dudley.gov.uk](mailto:freeschoolmeals.benefits@dudley.gov.uk)



Visiting – Dudley Council Plus, Castle Street, Dudley  
between 8.30am and 5pm Monday to Friday, 9am and 12 noon Saturday



YOGABRIDGES  
PRESENTS

BRITISH WHEEL OF YOGA CERTIFIED

SUITABLE FOR ALL LEVELS OF ABILITY



**EVERY THURSDAY | START AT 7.30PM**

*Ashwood Park Primary School, Bells Lane, Wordsley, Stourbridge, DY8 5DJ*

**£9 / CLASS OR 10% DISCOUNT FOR FULL TERM**

**FOR BOOKINGS AND ENQUIRIES PLEASE CALL OR EMAIL JAN:**

07764 404975 | [janetcooper@blueyonder.co.uk](mailto:janetcooper@blueyonder.co.uk) | [www.facebook.com/yogawithjan](https://www.facebook.com/yogawithjan)